

# Parts Manual



# H5C

## Hydraulic Winch for Tigercat Dozers

Applicable to winches with serial numbers H5C\*\*\*1226\*\*\* and later.

A Product of

**Allied Systems**  
COMPANY

Sherwood, OR USA

Please check the Allied Systems website  
regularly for updates to this manual.  
[www.alliedsystems.com](http://www.alliedsystems.com)

P/N 599029W-TIGERCAT

Printed in U.S.A. 11/04/2025



## **Safety Precautions**

**Read, understand and observe the Safety Summary on pages 1 through 3 to prevent injury to personnel and damage to equipment.**

**Winch serial number** \_\_\_\_\_

**Date put into service** \_\_\_\_\_

**NOTE: This publication may be translated to different languages for sole purpose of easy reference in non-English speaking locations. Should there be differences in interpretations to the text, please refer to the English language edition published by Allied Systems Company as the controlling document.**

---

## Index

### H5C Winch Parts for Tigercat Dozers

Safety Summary . . . . .	1
Unit Identification . . . . .	4
Using this Manual . . . . .	5
Oil Specifications . . . . .	6
Ordering Parts . . . . .	7
Nameplate & Decals . . . . .	8
Section 1 Frame/Covers/Mounting Parts . . . . .	9
Section 2 Gear/Shaft Train . . . . .	20
Section 3 Hydraulics/Electrical/Controls . . . . .	29
Section 4 Optional Equipment . . . . .	43
Section 5 Recommended Service Parts, Intervals & Kits . . . . .	47
Numerical Index . . . . .	53

## Safety Summary

### General Safety Notices

The following pages contain general safety warnings which supplement specific warnings and cautions appearing elsewhere in this manual. All electrical and hydraulic equipment is dangerous. You must thoroughly review and understand the Safety Summary before attempting to operate, troubleshoot or service this winch.

The following symbols and terms are used to emphasize safety precautions and notices in this manual:

### DANGER

The “DANGER” symbol indicates a hazardous situation which, if not avoided, will result in serious injury or death. Carefully read the message that follows to prevent serious injury or death.

### WARNING

The “WARNING” symbol appears wherever incorrect operating procedures or practices could cause serious injury or death. Carefully read the message that follows to prevent serious injury or death.

### CAUTION

The “CAUTION” symbol appears where a hazardous situation which, if not avoided, could result in minor to moderate injury and equipment damage.

### NOTICE

This signal word alerts to a situation that is not related to personal injury but may cause equipment damage.

NOTE: ...

The term “NOTE” highlights operating procedures or practices that may improve equipment reliability and/or personnel performance.

### Safety Regulations

Each country has its own safety legislation. It is in the operator’s own interest to be conversant with these regulations and to comply with them in full. This also applies to local bylaws and regulations in force on a particular worksite.

Should the recommendations in this manual deviate from those in the user’s country, the national regulations should be followed.

### Operation, Inspection, and Maintenance Warnings

### WARNING

Multiple hazards.

Ignoring safety warnings may cause equipment damage, personal injury or death.

All possible safety hazards cannot be foreseen and included in this manual. The operator must always be alert to possible hazards that could endanger personnel or damage the equipment.

### Training

- Do not operate the winch unless you are authorized and trained to do so.
- Read, understand, and follow the operating, inspection, and maintenance instructions in this manual.
- Keep yourself informed of any applicable codes, regulations and standards for the job.

### Personnel Safety

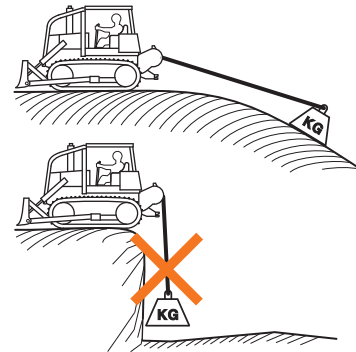
- Stay in the operator’s seat when operating the winch.
- Do not stand on the vehicle when operating the winch.
- Avoid winch operation near people or other machines.
- Never stand nor permit others to stand in the bight (loop) of a wire rope.

- Do not stand nor permit others to be near the winch or wire rope when there is tension on the wire rope.



- Make sure ground personnel are in plain view of the operator, and at a distance of at least 1½ times the working length of the wire rope.
- Observe jobsite rules.
- Do not use the control levers for hand holds when entering or leaving the vehicle.
- Be in complete control at all times.
- Do not use the control levers as hangers for clothes, water bags, grease guns, lunch pails, etc.
- Do not leave the vehicle when the winch wire rope is under tension.
- Do not permit riders on the vehicle or load.
- Operation Warnings
- Do not operate the winch unless the vehicle is equipped with a screen to protect the operator if the wire rope breaks.
- Be aware of the ground conditions, and make sure the ground and tractor are stable enough to pull the intended load.
- Do not attempt to pull loads in excess of the rated capacity of the winch.
- Make sure that any hand signals used by ground personnel are clearly defined and understood by everyone involved.
- Do not attempt to “jerk” or “shock” a load free. Doing so can cause loads in excess of the rated capacity of the wire rope, winch, or mounting hardware.

- Your winch may have temperature shut-off system for protection of tractor and winch. Manual override of high temperature shut-off will cause damage to tractor and winch.
- This winch is neither intended, designed, nor rated for any application involved in the lifting or moving of personnel.
- Do not use the winch as an anchor for a double or two-part line.
- Do not pull the hook through the throat or over the drum, which will cause damage.
- When the winch is not in use, make sure the control lever is in **BRAKE-ON** position and the winch brake is applied.
- Do not use winch as a hoist. Tractor and skidder mounted winches are designed for towing.



### Wire Rope Safety

- Always inspect wire rope, tail chain and other rigging components for wear, damage, broken strands or abuse before use.
- Never use wire rope, tail chain or other rigging that is worn-out, damaged or abused.
- Never overload wire rope, tail chain or rigging.
- Wire rope and tail chain will fail if worn-out, overloaded, misused, damaged, improperly maintained or abused.

## **WARNING**

**Wire rope or tail chain failure may cause serious injury or death.**

**Inspect rigging before use and obey all safety warnings.**

- Do not terminate wire rope to tail chain by the use of a knot.
- Do not handle wire rope if the hook end is not free. A load could break away, suddenly tensioning the wire rope, resulting in serious injury or death.
- Stay clear of wire rope entry areas (fairlead or arch rollers, winch drum etc).
- Maintain a **minimum of three (3) complete wraps of wire rope** on the drum for normal operation. It may help to paint the last five wraps of wire rope a contrasting color, to serve as a visual indicator.
- Do not handle wire rope with bare hands. Wear leather gloves at all times.
- Align the tractor with the load to prevent side loading the winch, and to maintain even spooling of the wire rope.
- If applying tension to the wire rope manually during spooling:
  - ‰ ensure that the operator is winching in slowly,
  - ‰ keep your hands and clothing well clear of any rollers or the winch drum,
  - ‰ do not maintain tension by letting the wire rope to slip through your hands,
  - ‰ use a hand-over-hand technique to maintain tension.
- The hydraulic system must be kept clean and free of contamination at all times.
- Do not weld on any part of the winch. Contact Allied Systems if weld repairs are needed.

### Hydraulic Hazards

- Wear personal protective equipment, such as gloves and safety glasses, whenever servicing or checking a hydraulic system.
- Assume that all hydraulic hoses and components are pressurized. Relieve all hydraulic pressure before disconnecting any hydraulic line.
- Never try to stop or check for a hydraulic leak with any part of your body; use a piece of cardboard to check for hydraulic leaks.
- Small hydraulic hose leaks are extremely dangerous, and can inject hydraulic oil under the skin, even through gloves.



**DANGER**

**Injection hazard.**

**Infection and gangrene will result when hydraulic oil penetrates the skin. See a doctor immediately to prevent loss of limb or death.**

**Use a piece of cardboard to check for hydraulic leaks.**



### Maintenance Warnings

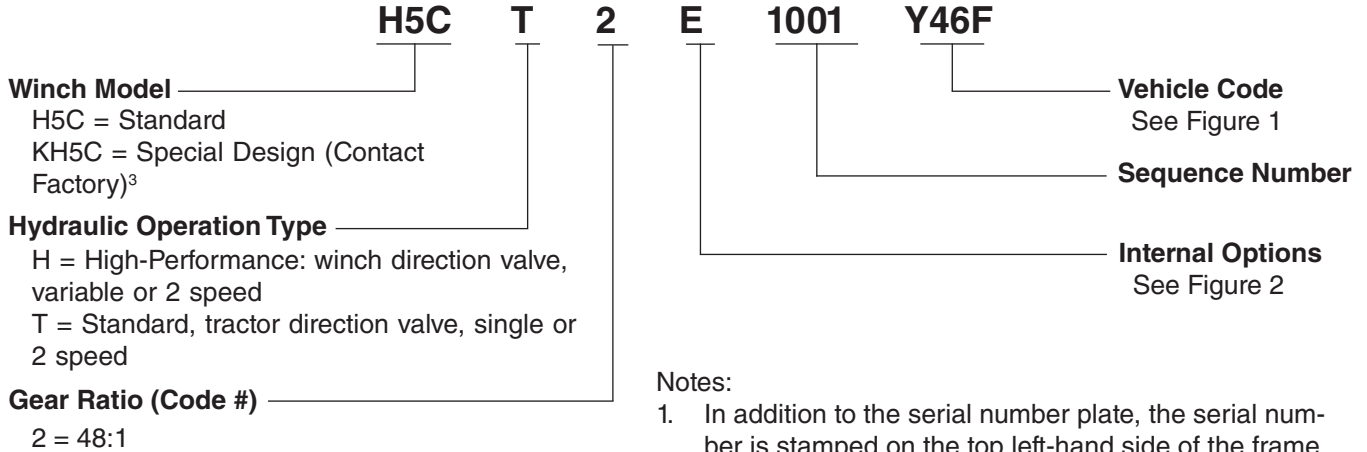
- Do not permit other people near the control area when you inspect or repair a machine.
- Never inspect, repair, or perform maintenance on a machine that is in motion.
- Inspect the winch before each use:
  - ‰ Make sure that the controls and instruments operate correctly.
  - ‰ Report the need for repairs immediately.
  - ‰ Do not work with a damaged or worn wire rope.
  - ‰ Do not use a winch that needs repairs.
  - ‰ If the wire rope and ferrule must be removed from the drum, make sure the end of the wire rope and ferrule are controlled when the ferrule is released. The end of the wire rope can suddenly move from the drum like a compressed spring when the ferrule is released, and cause an injury.
- Replace any parts only with genuine Allied Winch parts.
- Use only the lubricants listed in the Recommended Oil List. See page 6.

### Product Modifications

- Any alterations to the winch that have not been approved by Allied Systems Company, or use of any non-OEM replacement parts, will void the warranty, and may introduce serious safety hazards.
- Any non-OEM parts used, or any alterations made are done so at your own risk to personnel safety. This includes the addition of accessories and attachments not manufactured or approved by Allied Systems Company.

## Unit Identification

Allied Winch Serial Number Nameplate Data For Tractor Mountings



**Notes:**

1. In addition to the serial number plate, the serial number is stamped on the top left-hand side of the frame.
2. Circled numbers in Figure 1 indicate possible gear ratios.
3. If your serial number begins with the letter "K", contact the factory for parts and service information.
4. If your serial number ends with the letter "M", contact the factory for parts and service information.

C O D E	Tigercat
<b>Y46F</b>	920 ②

**Figure 1, Dozer Identification Codes and Available Gear Ratios**

Circled numbers in Figure 1 indicate possible gear ratios.

	<b>B</b>	<b>E</b>
<b>PFR</b>	X	X
<b>FREESPOOL</b>	X	X
<b>BRAKE-OFF</b>	X	X
<b>DRAG BRAKE</b>		X
<b>OVERWIND</b>	X	X
<b>SINGLE SPEED CONTROL</b>		X
<b>2-SPEED CONTROL</b>	X	

**Figure 2, Internal Options**

## Using this Manual

### When the part number and the next higher assembly is not known:

1. Determine the function and application of the part required. Turn to the illustrated index page immediately behind the front cover, and select the most appropriate area.
2. Use the table of contents at the beginning of each chapter to determine the assembly which would normally contain the part required. Proceed then to locate the part on the assembly breakdown page.

### When the part number is not known and the next higher assembly is known:

1. Determine the assembly the required part is used on. Turn to the master index (which immediately follows the illustrated index).
2. Locate the assembly on which the required part is used, and turn to the page indicated for that assembly. Proceed to locate the part on the assembly breakdown page.

### When the part number is known:

Use the numerical index to find the part number. Turn to the page listed and locate the part as indicated by the reference number.

### General:

The assembly breakdowns include part numbers, descriptions, quantities required, keys and footnotes to help in selecting the correct parts.

Keys are used to show effective serial numbers for two or more similar assemblies, LH and RH assembly parts, etc. Select the appropriate key, "A," "B," "C," or "D" and the corresponding quantity column to find the required parts.

Indent dots are used to indicate assemblies and sub-parts of assemblies. No dot indicates the major assembly. Part descriptions which are indented with dots are sub-parts of the major assembly shown above.

Quantities shown are for one assembly. Note that when two assemblies are shown, but the quantity of the sub-parts is indicated as three, this means three per assembly, for a total of six. AR means As Required, and NSS indicates Not Sold Separately.

Serial numbers are shown to allow for the most current parts information to be incorporated into the parts manual. See page 4 for serial number information.

### Abbreviations

Abbreviations are used both on the winch and in this manual. For example, a manifold may have a port stamped "FS". That port is related to the "freespool" circuit. This abbreviation is also used on pages in this manual that reference this port, or the ports connected to this port. Figure 3 lists the most common abbreviations used in this manual.

Abbreviation	Full Name
P	Pressure
T	Tank
BO	Brake Off
FA	Filter Outlet
FE	Filter Inlet
FS	Freespool
HS	High Speed
LS	Load Sense
PD	Pilot Drain
PP	Pilot Pressure
PS	Pilot Supply
RI	Reel In
RO	Reel Out
TP	Test Port
TS	Temperature Switch

Figure 3, , Abbreviations

## Oil Specifications

### Oil Specifications

The hydraulic winch motor and control system operate off of the dozer implement hydraulic system. Factory testing is done with ExxonMobil Mobilfluid 424. Use mineral based hydraulic fluid, ISO 68 viscosity. The winch gear case is filled with hydraulic transmission oil and is separate from the dozer hydraulic system. Factory fill for the gear case is ExxonMobil Mobilfluid 424. For proper operation, only oils shown in Figure 4 should be used in the winch gear case.

<b>Recommended Oils* - General Conditions</b>			
<b>Manufacturer</b>	<b>Oil Type</b>	<b>Ambient Temperature Range</b>	
		<b>°F</b>	<b>°C</b>
ExxonMobil	Mobilfluid 424 (Factory fill)	-13 to 104	-25 to 40
John Deere	Hy-Gard™	-13 to 122	-25 to 50
Chevron	1000 THF	-13 to 104	-25 to 40
Caterpillar	Multipurpose Tractor Oil (MTO)	-13 to 104	-25 to 40
Case	Hy-Tran Ultra	-20 to 122	-29 to 50

<b>Recommended Oils* - Low Temperature Conditions</b>			
<b>Manufacturer</b>	<b>Oil Type</b>	<b>Ambient Temperature Range</b>	
		<b>°F</b>	<b>°C</b>
ExxonMobil	Mobilfluid 424	-40 to 86	-40 to 30
John Deere	Low Viscosity Hy-Gard	-40 to 86	-40 to 30
Chevron	THF W	-40 to 86	-40 to 30

\* Note: Use of a non-recommended oil may void warranty.

**Figure 4, Recommended Oil List**

### Oil Capacity

The oil capacity for H5C winch case (gear train) is 17 quarts (16 liters).

## Ordering Parts

When ordering replacement parts, give the unit serial number, part number, name of part and quantity required.

For any further information on parts, service or ordering, consult your local winch dealer, or contact Allied Systems Company:

**Allied Systems Company**  
21433 SW Oregon Street  
Sherwood, OR 97140 U.S.A.

Phone: 503-625-2560

Fax: 503-625-5132

E-mail: [parts@alliedsystems.com](mailto:parts@alliedsystems.com)

Also see our website, [www.alliedsystems.com](http://www.alliedsystems.com), where the most current copy of this manual is always available.

**NOTE: This publication may be translated to different languages for sole purpose of easy reference in non-English speaking locations. Should there be differences in interpretations to the text, please refer to the English language edition published by Allied Systems Company as the controlling document.**

# Nameplate & Decals



ALLIED SYSTEMS COMPANY  
21433 SW OREGON STREET  
SHERWOOD, OREGON 97140 USA  
WWW.ALLIEDSYSTEMS.COM

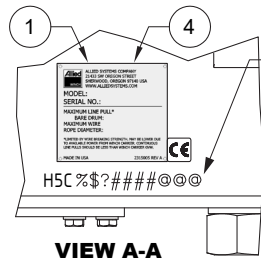
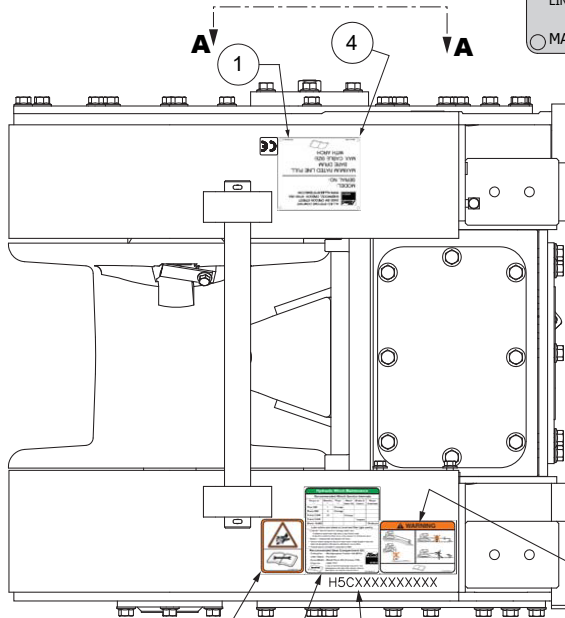
MODEL: **H5C**      **20##**  
SERIAL NO.: **H5C%\$?####@@@**

MAXIMUM LINE PULL\*  
BARE DRUM:  
MAXIMUM WIRE  
ROPE DIAMETER:

\*LIMITED BY WIRE BREAKING STRENGTH. MAY BE LOWER DUE TO AVAILABLE POWER FROM WINCH CARRIER. CONTINUOUS LINE PULLS SHOULD BE LESS THAN WINCH CARRIER GVW.

MADE IN USA      2315005 REV C

## WINCH TOP VIEW



STAMP NAMEPLATE AND FRAME AS SHOWN  
% = H (HI-PERFORMANCE) OR T (STANDARD)  
\$ = GEAR RATIO CODE  
? = INTERNAL OPTIONS  
#### = SEQUENCE NUMBER  
@@@ = VEHICLE CODE  
SEE DRAWING 231271



Hydraulic Winch Maintenance					
Recommended Winch Service Intervals					
Hours or mi	Months	Filter	Winch Gear Oil	Brake & Clutch	Major Overhaul
First 250	1	Change			
Every 500	3	Change			
Every 2,000	12	Change			
Every 5,000				* Inspect	* Evaluate
Every 10,000					

Lube rollers and check oil level and filter light weekly.

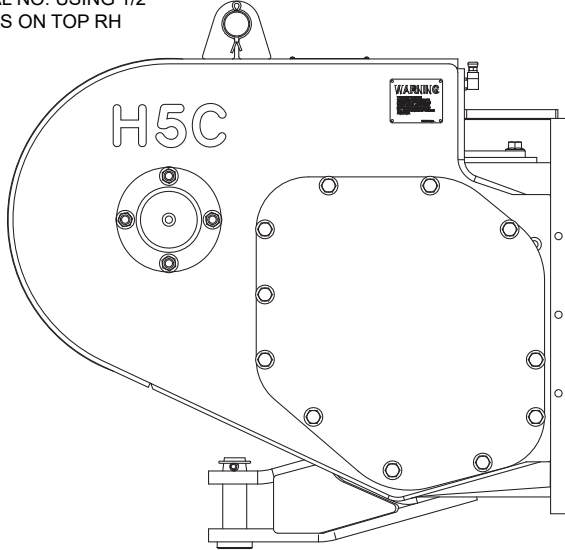
\* Evaluate = Service based on average winch use;  
- If used more than once a day, perform overhaul.  
- If used less than once a day, remove covers and check to determine need.  
\*\* Inspect = disassemble and inspect for wear.  
\*\*\* Service winch using the tractor's hour meter or the length of time the winch is mounted to the tractor, whichever occurs first.  
\*\*\* Follow tractor schedule if using tractor filter.

**Recommended Gear Compartment Oil:**

Caterpillar	-TO-4	
Chevron	-Drive Train Fluids HD	
ExxonMobil	-Mobiltrans HD Series	

Consult service/operating manual for low temperature oils and other details. Use of non-recommended oil may void warranty. 231074 Rev D

STAMP SERIAL NO. USING 1/2 INCH LETTERS ON TOP RH FRAME



## WINCH SIDE VIEW

Item	Part No.	Qty	Description	Item	Part No.	Qty	Description
1	*	1	Nameplate	5	2311330	1	Decal, Load & Wire Rope
2	1321665W	2	Decal, Warning	40	2311557	AR	Label, CE Mark
3	2311329	1	Decal, Maintenance				
4	16602W	4	Screw	*	Contact Factory		

**Section 1**  
**Frames/Covers/Mounting Parts**



## Frame and Covers

Tigercat 920 (H5CT2BY46F W/ Brake-Off)  
Page 2 of 2

Item	Part No.	Qty	Description	Item	Part No.	Qty	Description
15.1	2303221W	1	Pin, Retaining	51.9	*b 313022W	1	Loctite 515-Adhesive
15.2	1314656W	1	Pin, Drawbar	51.11	16243W	1	Set Screw
15.3	93927W	1	Rod, Tie	51.12	15315W	1	Fitting
15.4	15256W	2	Cotter Pin	51.13	15290W	1	Fitting
31.1	2307097W	1	Cover, RH	51.16	*a 2318213	1	Brake-Off Clutch Cover
31.2	16243W	1	Set Screw	51.18	2318191	AR	Shim - .005
33.1	2307342W	1	Cover, Inner, RH	51.19	2318192	AR	Shim - .007
33.2	2302513W	1	Cover, Top	51.20	2318193	AR	Shim - .020
33.3	398817W	4	Screw, Flange	51.21	2318194	AR	Shim - .005
33.4	16243W	1	Set Screw	51.22	2318195	AR	Shim - .007
51.1	2318166	1	Cover, LH	51.23	2318196	AR	Shim - .020
51.2	2303848W	18	Screw, Flange	51.24	2318186	1	Cover, Bearing
51.3	176208W	2	Pin	51.25	39383W	1	O-Ring
51.4	2304101W	1	Breather	51.26	54127W	2	Ring, Retaining
51.5	16151W	1	Fitting	51.27	2318217	8	Capscrew
51.6	188210W	1	Fitting	51.28	2318218	6	Capscrew
51.7	398567W	2	Screw, Flange	51.29	232257	1	O-Ring
51.8	398817W	15	Screw, Flg	51.30	235387	1	Fitting

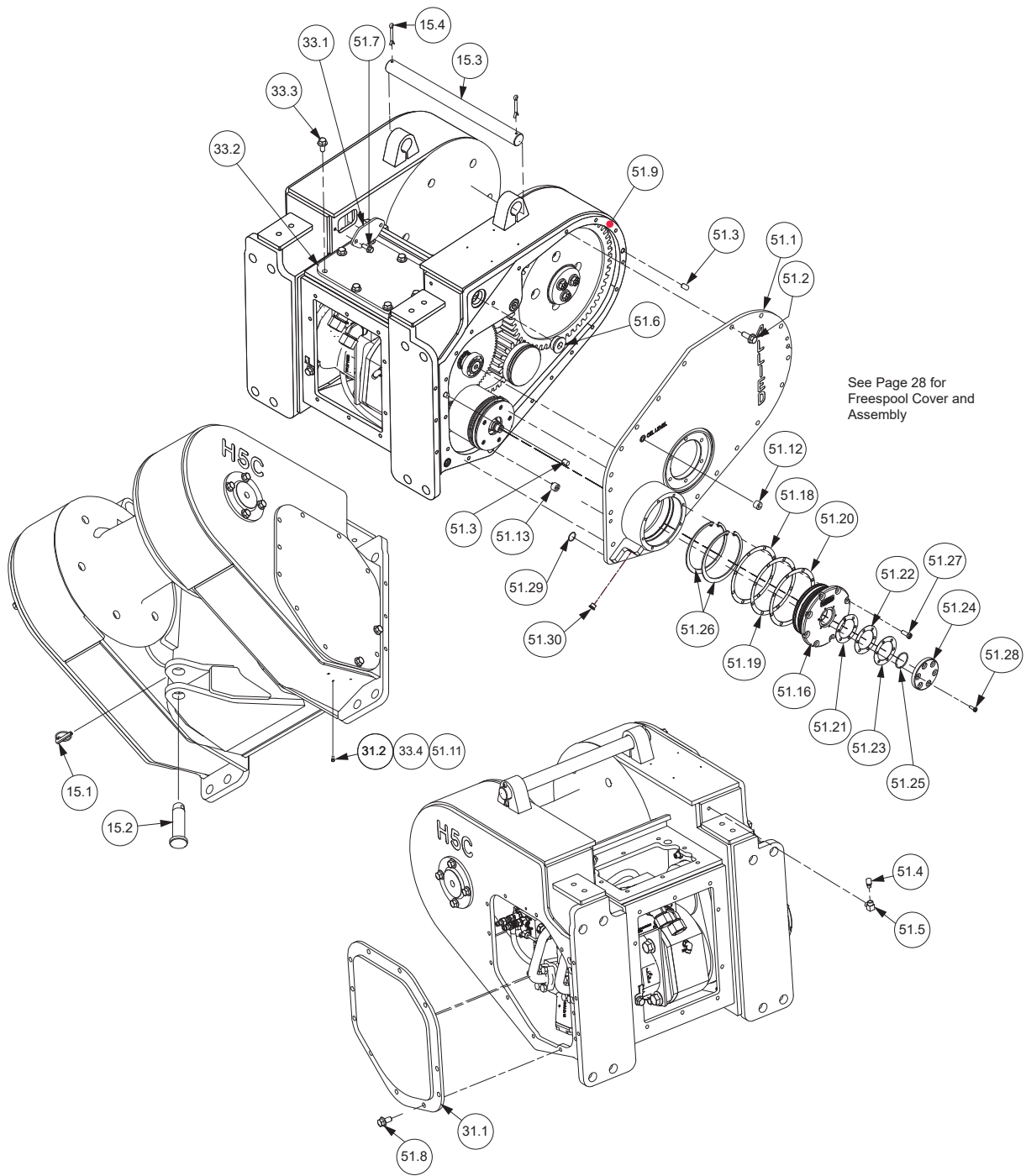
\*a Brake-Off Clutch Cover on page 18

\*b See service manual(599028W) on page 4-38 for application steps.

# Frame and Covers

Tigercat 920 (H5CH2BY46F W/ Brake-Off)

Page 1 of 2



## Frame and Covers

Tigercat 920 (H5CH2BY46F W/ Brake-Off)

Page 2 of 2

Item	Part No.	Qty	Description	Item	Part No.	Qty	Description
15.1	2303221W	1	Pin, Retaining	51.9	*b 313022W	1	Loctite 515-Adhesive
15.2	1314656W	1	Pin, Drawbar	51.11	16243W	1	Set Screw
15.3	93927W	1	Rod, Tie	51.12	15315W	1	Fitting
15.4	15256W	2	Cotter Pin	51.13	15290W	1	Fitting
31.1	2318324	1	Cover, RH	51.16	*a 2318213	1	Brake-Off Clutch Cover
31.2	16243W	1	Set Screw	51.18	2318191	AR	Shim - .005
33.1	2307342W	1	Cover, Inner, RH	51.19	2318192	AR	Shim - .007
33.2	2302513W	1	Cover, Top	51.20	2318193	AR	Shim - .020
33.3	398817W	4	Screw, Flange	51.21	2318194	AR	Shim - .005
33.4	16243W	1	Set Screw	51.22	2318195	AR	Shim - .007
51.1	2318166	1	Cover, LH	51.23	2318196	AR	Shim - .020
51.2	2303848W	18	Screw, Flange	51.24	2318186	1	Cover, Bearing
51.3	176208W	2	Pin	51.25	39383W	1	O-Ring
51.4	2304101W	1	Breather	51.26	54127W	2	Ring, Retaining
51.5	16151W	1	Fitting	51.27	2318217	8	Capscrew
51.6	188210W	1	Fitting	51.28	2318218	6	Capscrew
51.7	398567W	2	Screw, Flange	51.29	232257	1	O-Ring
51.8	398817W	15	Screw, Flg	51.30	235387	1	Fitting

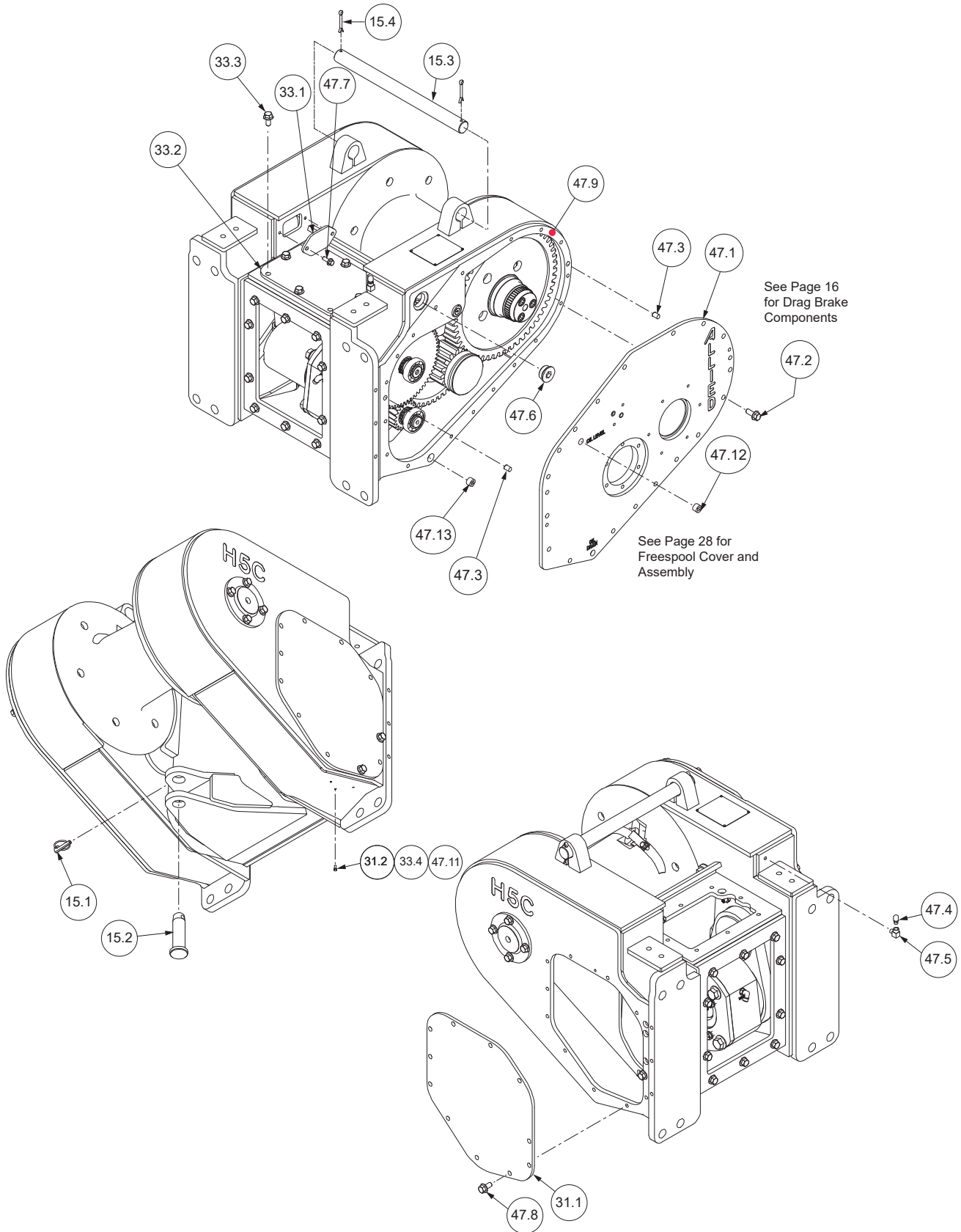
\*a Brake-Off Clutch Cover on page 18

\*b See service manual(599028W) on page 4-38 for application steps.

# Frame and Covers

Tigercat 920 (H5CT2EY46F with Drag Brake)

Page 1 of 2



## Frame and Covers

Tigercat 920 (H5CT2EY46F with Drag Brake)

Page 2 of 2

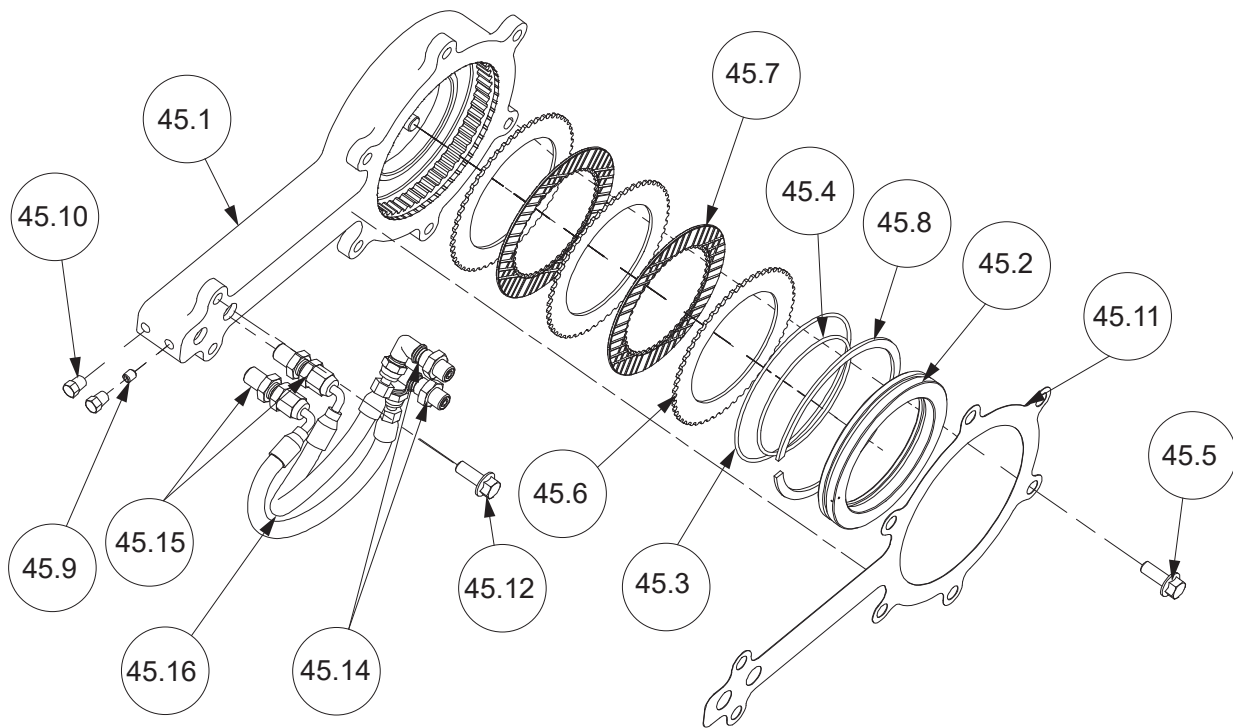
Item	Part No.	Qty	Description	Item	Part No.	Qty	Description
15.1	2303221W	1	Pin, Retaining	47.1	2317721	1	Cover, LH
15.2	1314656W	1	Pin, Drawbar	47.2	2303848W	18	Screw, Flange
15.3	93927W	1	Rod, Tie	47.3	*b 176208W	2	Pin
15.4	15256W	2	Cotter Pin	47.4	2304101W	1	Breather
31.1	2307097W	1	Cover, RH	47.5	16151W	1	Fitting
31.2	16243W	1	Set Screw	47.6	188210W	1	Fitting
33.1	2307342W	1	Cover, Inner, RH	47.7	398567W	2	Screw, Flg
33.2	2302513W	1	Cover, Top	47.8	398817W	15	Screw, Flg
33.3	398817W	4	Screw, Flange	47.9	*a 244260	AR	Loctite 515-Adhesive
33.4	16243W	1	Set Screw	47.11	16243W	1	Screw
				47.12	15315W	1	Fitting
				47.13	15290W	1	Fitting

\*a See service manual(599028W) on page 4-36 for application steps.

\*b Apply Loctite 290-Adhesive

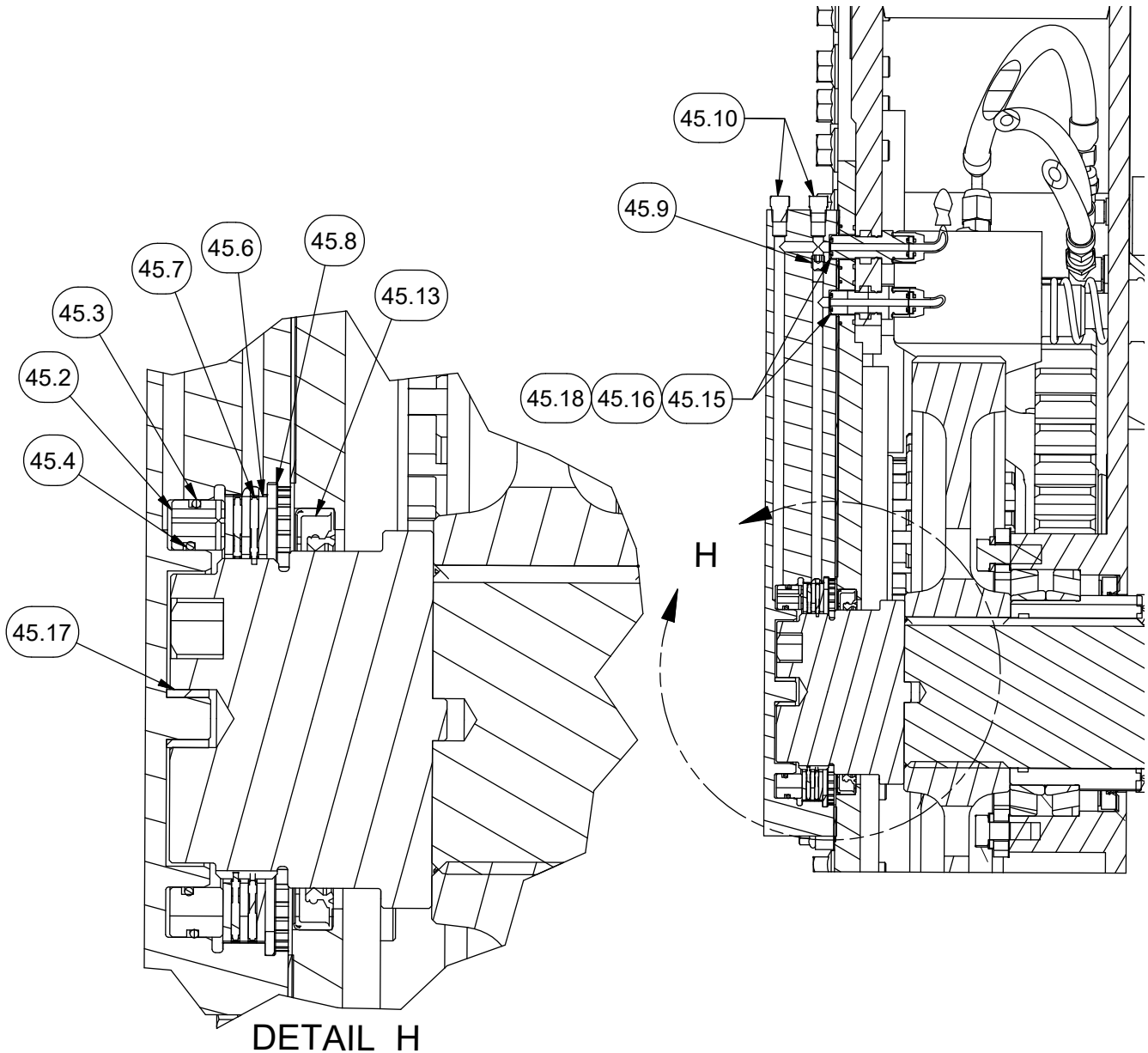
# Drag Brake Components

Tigercat 920 (H5CTEY46F W/ Drag Brake)  
Page 1 of 2



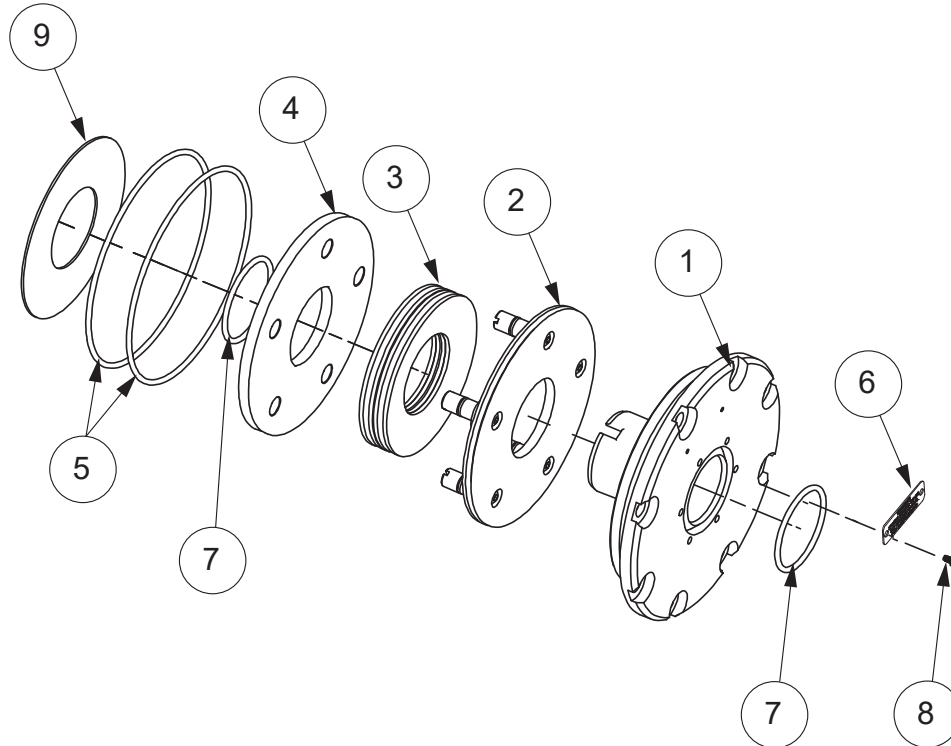
**Drag Brake Components**  
 Tigercat 920 (H5CTEY46F W/ Drag Brake)  
 Page 2 of 2

Item	Part No.	Qty	Description	Item	Part No.	Qty	Description
<b>2317728 Drag Brake Components</b>							
45.1	2317722	1	.Drag Brake Housing	45.9	16202W	1	.Set Screw
45.2	2317726	1	.Piston - Drag Brake	45.10	209511	2	.Fitting
45.3	27725	1	.O-Ring	45.11	2317727	1	.Gasket - Drag Brake
45.4	39742W	1	.O-Ring	45.12	399784W	2	.Screw, Flg
45.5	398567W	6	.Screw, Flg	45.13	205724	1	.Seal
45.6	2304874W	3	.Plate, Separator	45.14	2307081W	2	.Fitting
45.7	2304873W	2	.Disc, Friction	45.15	R834100	2	.Fitting
45.8	2303715W	1	.Snap Ring	45.16	249537	2	.Hose Assembly
				45.17	2317803	1	.Bushing
				45.18	232257	2	.O-Ring



## Brake-Off Clutch Cover Assembly

Tigercat 920 (H5CH2BY46F/H5CT2BY46F)

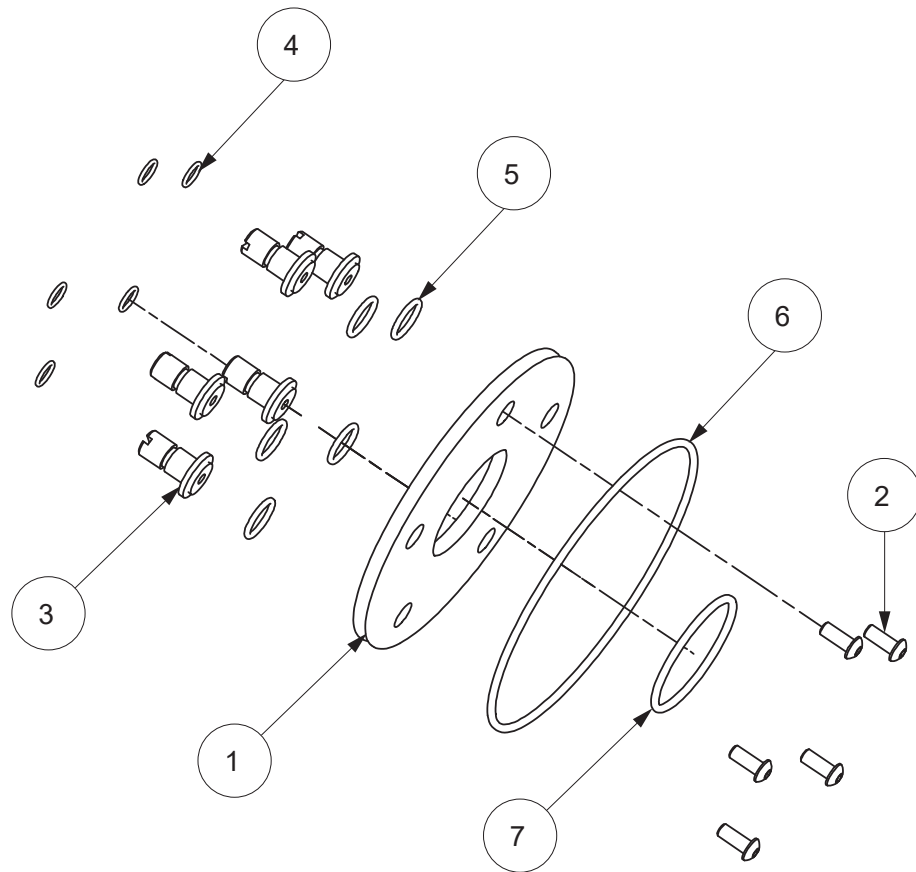


Item	Part No.	Qty	Description	Item	Part No.	Qty	Description
	<b>2318213</b>		<b>Brake-Off Clutch Cover</b>				
1	2318214	1	. Cover	5	15895W	2	. O-Ring
2	*a 2318181	1	. Piston Assembly	6	2318198	1	. Decal - Spring Warning
3	2305100W	4	. Spring - Belleville	7	Y060600-227	1	. O-Ring
4	2318169	1	. Seal Ring	8	16602W	2	. Screw
				9	2318311	1	. Spacer, .060

\*a Piston Assembly on page 19

### Piston Assembly

Tigercat 920 (H5CH2BY46F/H5CT2BY46F)



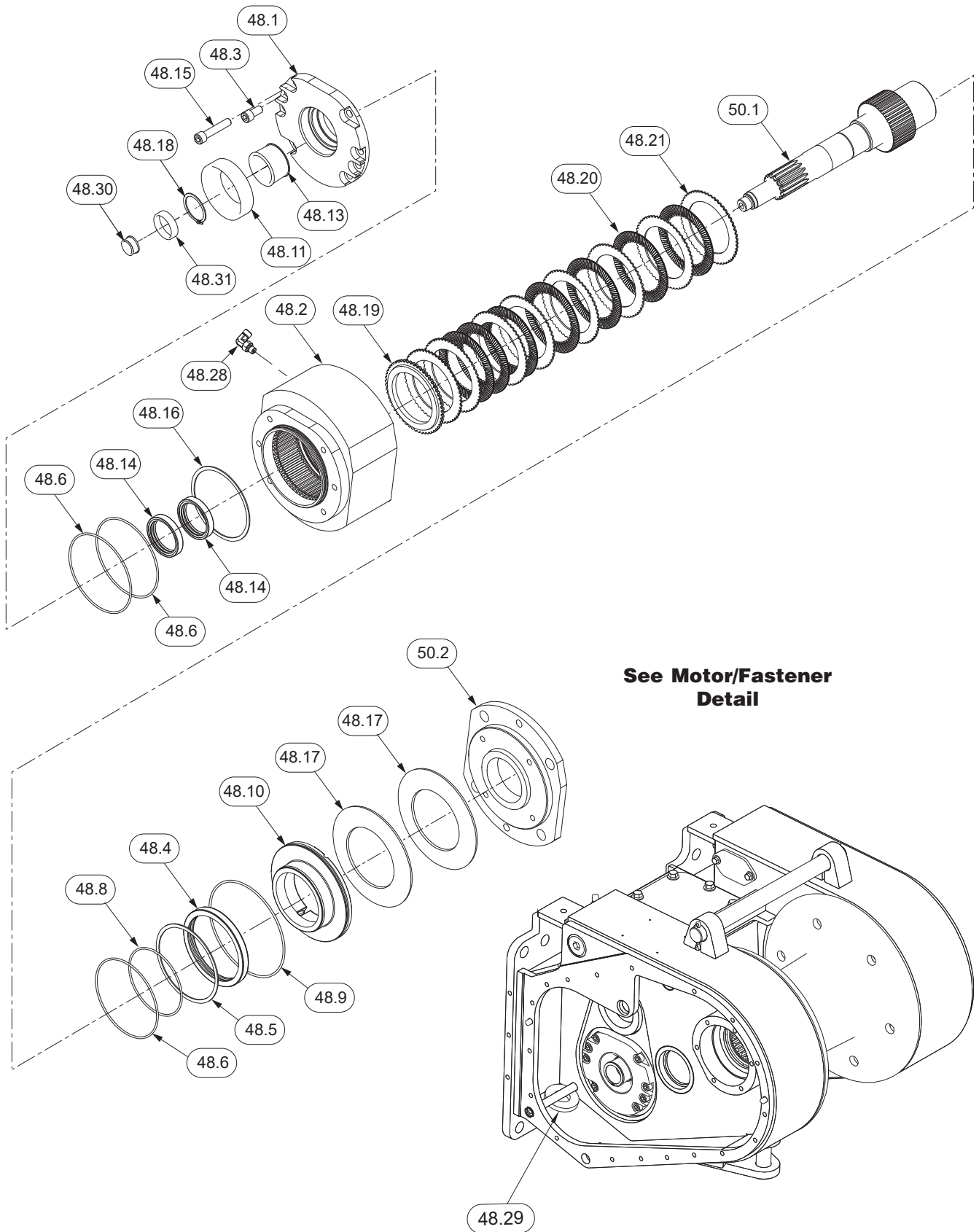
Item	Part No.	Qty	Description	Item	Part No.	Qty	Description
	<b>2318181</b>		<b>Piston Assembly</b>	4	15860W	5	.O-Ring
1	2318182	1	.Piston	5	63105W	5	.O-Ring
2	*a Y25G-0410	5	.Capscrew	6	15895W	1	.O-Ring
3	2300043W	5	.Plunger	7	Y060600-227	1	.O-Ring

\*a Uses 2300164W Thread Lock

**Section 2**  
**Gear/Shaft Train**

### Motor Shaft Assembly

Tigercat 920 (H5CH2BY46F & H5CT2BY46F With BRAKE-OFF)

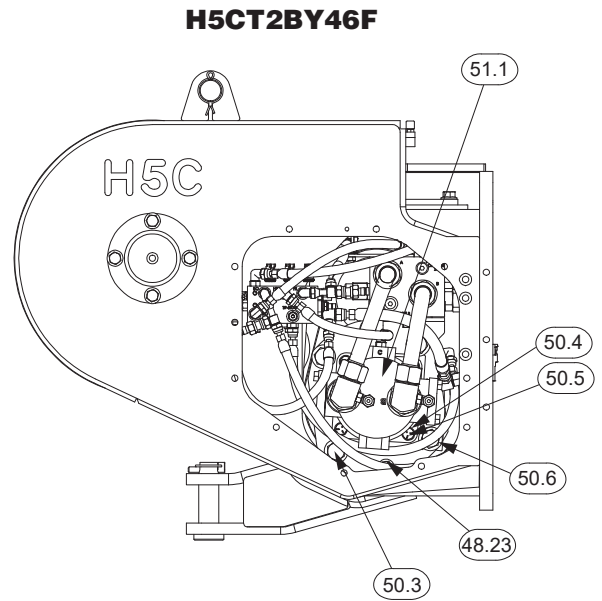
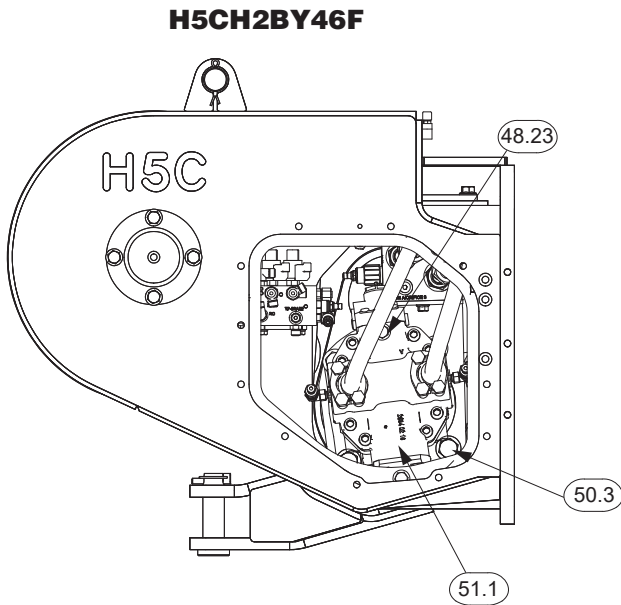


### Motor Shaft Assembly

Tigercat 920 (H5CH2BY46F & H5CT2BY46F With BRAKE-OFF)

Item	Part No.	Qty	Description	Item	Part No.	Qty	Description
48.1	2318175	1	Plate - Brake Mounting	48.19	334442W	1	Plate, Pressure
48.2	2306078W	1	Housing, Brake	48.20	2306198W	7	Disc, Friction
48.3	Y73G-0816	2	Capscrew	48.21	2304874W	8	Plate, Separator
48.4	2306599W	1	Sleeve	48.23	*c 398820W	2	Screw, Flg
48.5	2306604W	1	Snap Ring	48.24	273338W	1	Sealant, Pipe Thread
48.6	89776W	3	O-Ring	48.28	R833251	1	Fitting
48.8	86596W	1	O-Ring	48.29	R525293	1	Magnet, Ceramic
48.9	87287W	1	O-Ring	48.30	2318178	1	Cone - Roller Bearing
48.10	2306077W	1	Piston, Brake	48.31	2318179	1	Cup - Roller Bearing
48.11	2318238	1	Cup - Roller Bearing	50.1	*b 2318297	1	Motor Shaft
48.13	2318239	1	Cone - Roller Bearing	50.1	*a 2318170	1	Motor Shaft
48.14	2306073W	2	Seal	50.2	*b 2306076W	1	Plate - Motor Mtg
48.15	Y73G-0840	6	Capscrew	50.2	*a 2306214W	1	Plate - Motor Mtg
48.16	334475W	1	Ring - Snap, Int	50.3	398828W	2	Screw, Flg
48.17	219084W	2	Belleville Spring	50.4	*a 15158W	4	Lockwasher
48.18	58954W	1	Snap Ring	50.5	*a 18588W	4	Capscrew
				50.6	917373W	2	Screw, Flg
				51.1	*b 2318307	1	Variable Speed motor
				51.1	*a 2306938W	1	Motor, Hydraulic 2 Speed (See page 38)

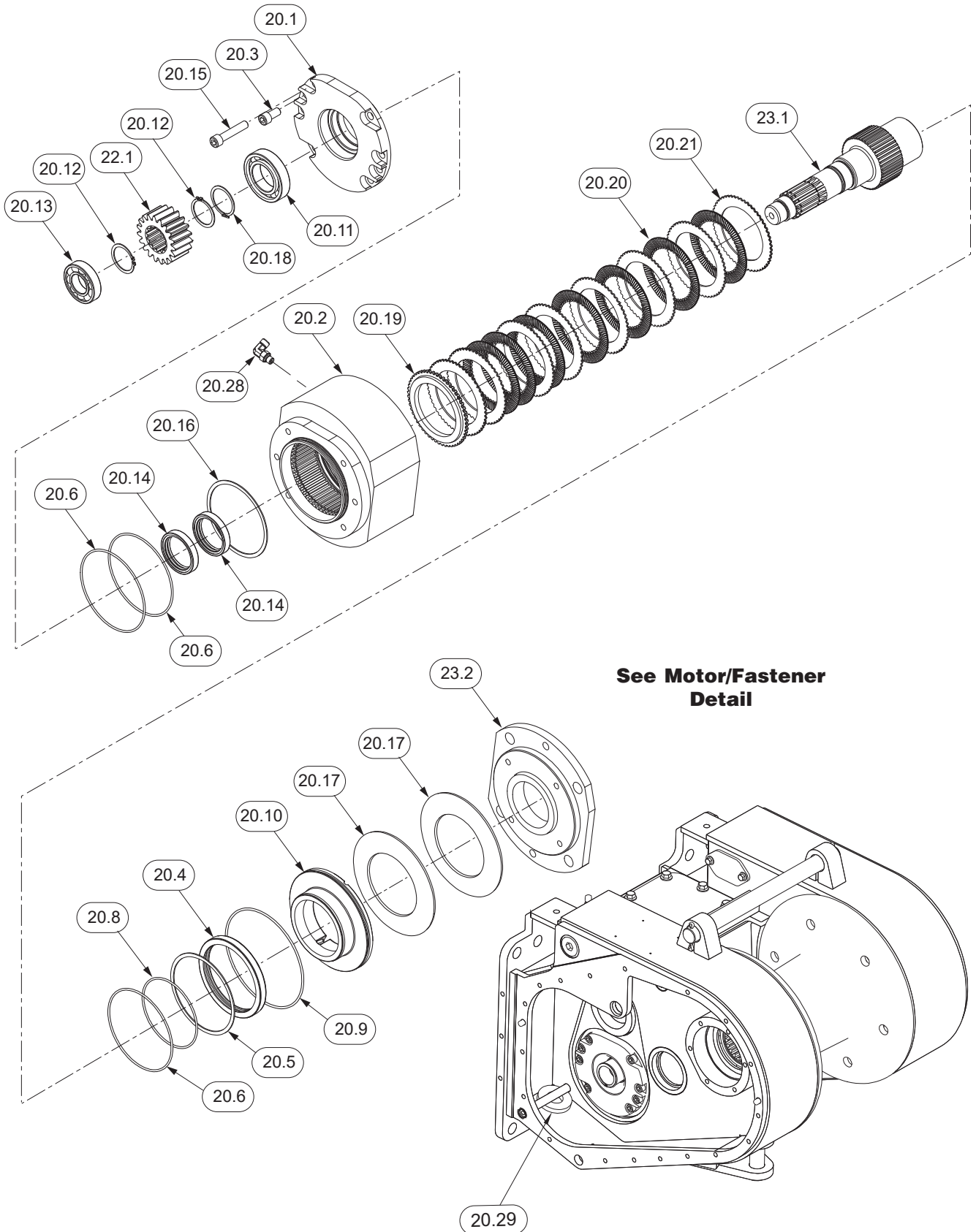
\*a H5CT2BY46F  
 \*b H5CH2BY46F  
 \*c (Use Adhesive) 244260



**Motor/Fastener Detail**

### Motor Shaft Assembly

Tigercat 920 (H5CT2EY46F with Drag Brake)

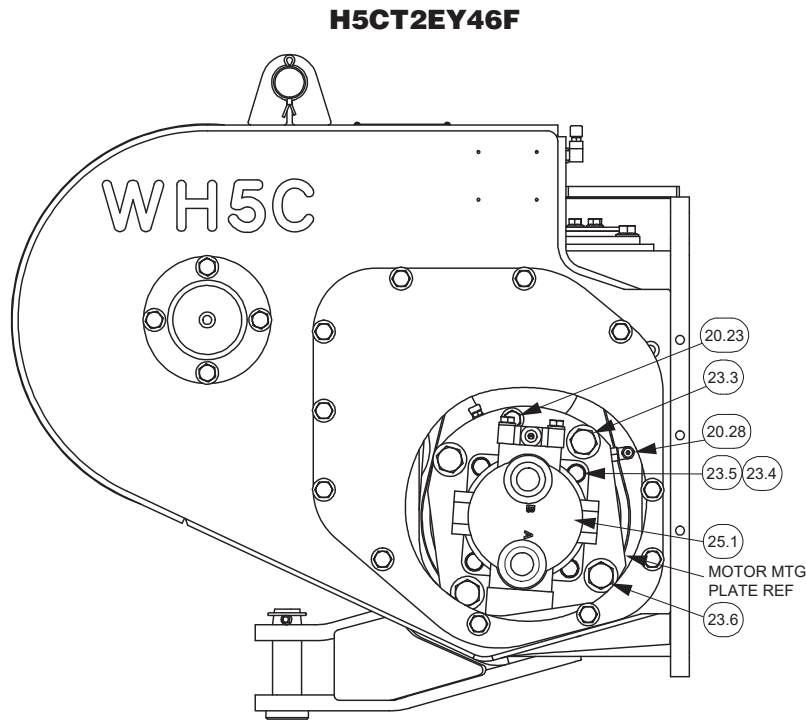


### Motor Shaft Assembly

Tigercat 920 (H5CT2EY46F with Drag Brake)

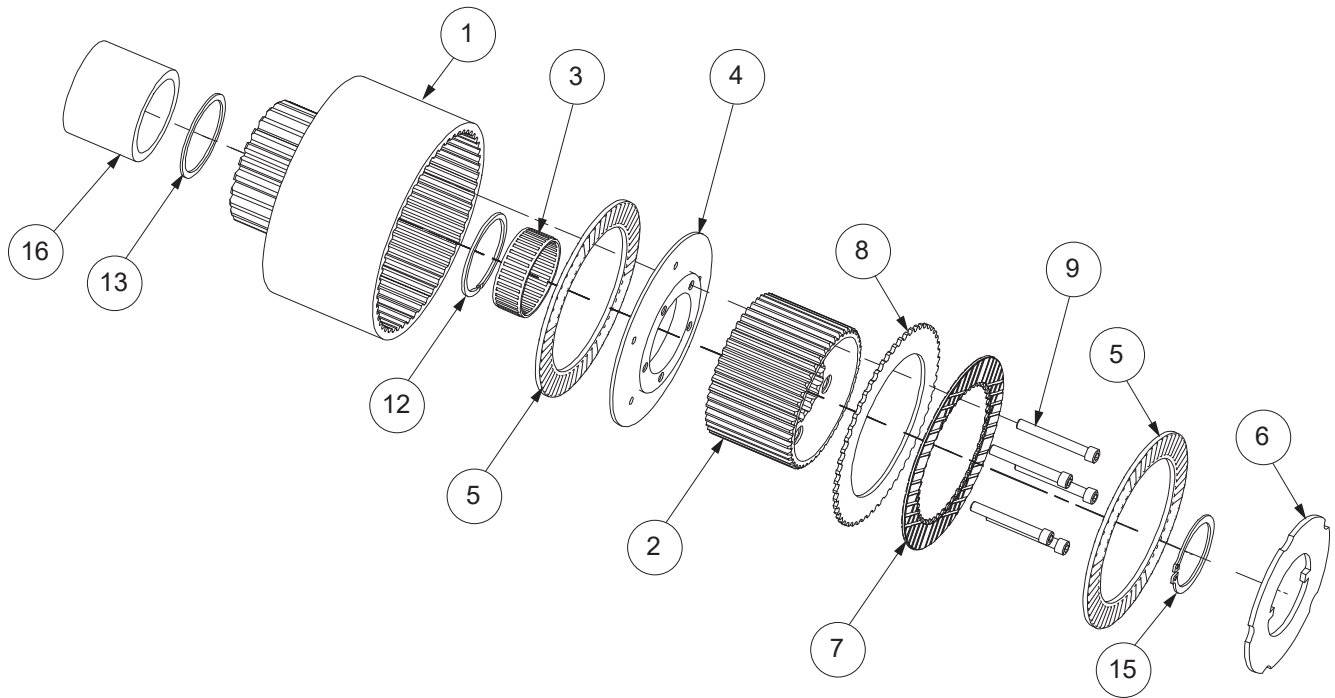
Item	Part No.	Qty	Description	Item	Part No.	Qty	Description
20.1	2314062	1	Plate- Mounting, Brake	20.19	334442W	1	Plate, Pressure
20.2	2306078W	1	Housing, Brake	20.20	2306198W	7	Disc, Friction
20.3	Y73G-0816	2	Capscrew	20.21	2304874W	8	Plate, Separator
20.4	2306599W	1	Sleeve	20.23	*b 398820W	2	Screw
20.5	2306604W	1	Snap Ring	20.28	R833251	1	Fitting
20.6	89776W	3	O-Ring	20.29	R525293	1	Magnet, Ceramic
20.8	86596W	1	O-Ring	22.1	2311411	1	Gear, 24T
20.9	87287W	1	O-Ring	23.1	2306494W	1	Shaft
20.10	2306077W	1	Piston, Brake	23.2	2306214W	1	Plate, Mounting, Motor
20.11	41210W	1	Bearing, Ball	23.3	398828W	2	Screw, Flg
20.12	12916W	2	Snap Ring	23.4	15158W	4	Lockwasher
20.13	41207W	1	Bearing, Ball	23.5	18588W	4	Capscrew
20.14	2306073W	2	Seal	23.6	917373W	2	Capscrew
20.15	Y73G-0840	6	Capscrew	25.1	*a 2306938W	1	Motor, Hydraulic 2 Speed
20.16	334475W	1	Ring, Snap, Int				
20.17	219084W	2	Belleville Spring				
20.18	12944W	1	Snap Ring				

\*a Hydraulic 2 Speed Motor on page 38  
 \*b (Use Adhesive) 313022W



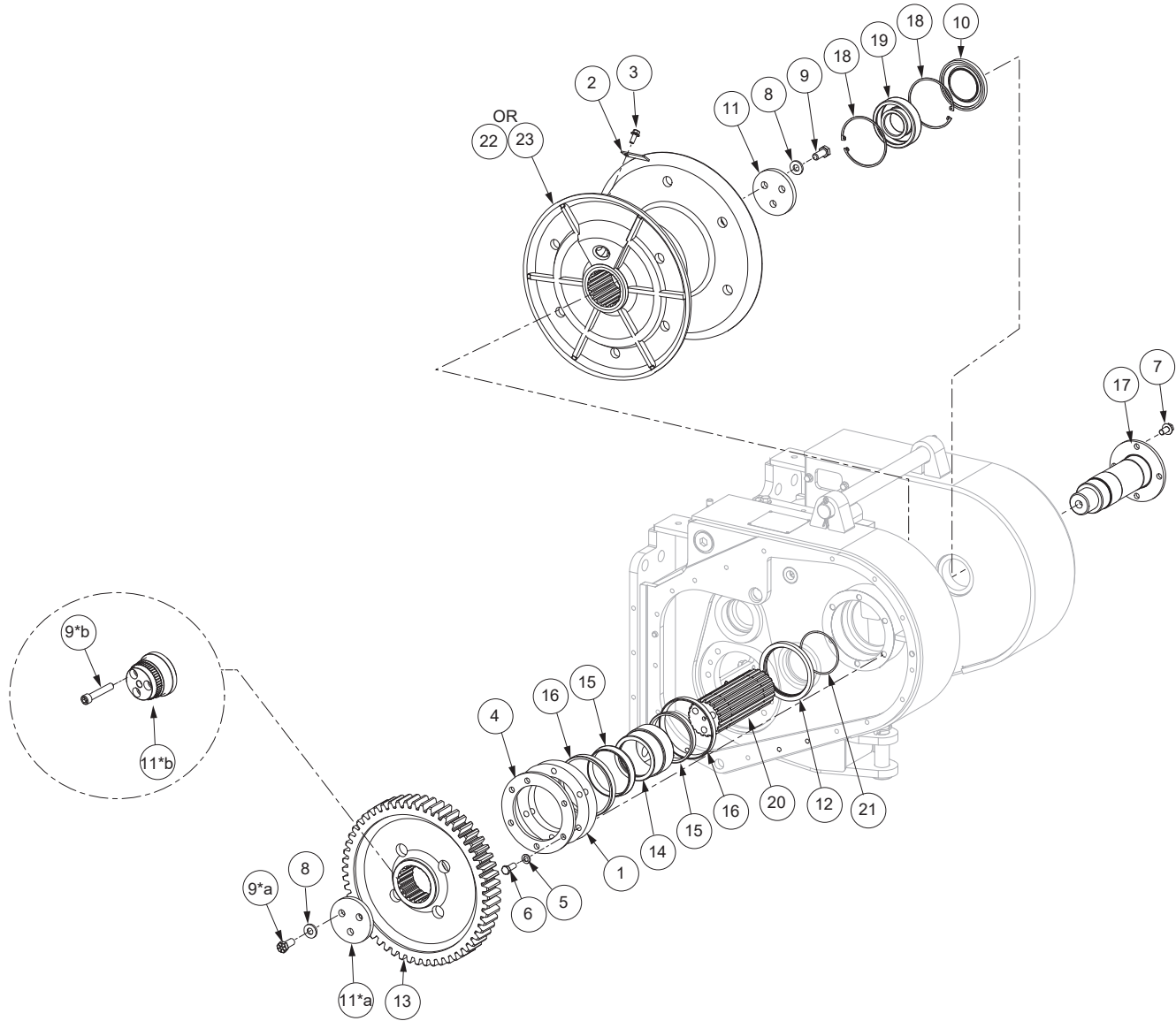
Motor/Fastener Detail

**Brake Off Clutch Assembly**  
Tigercat 920 (H5CH2BY46F/H5CT2BY46F)



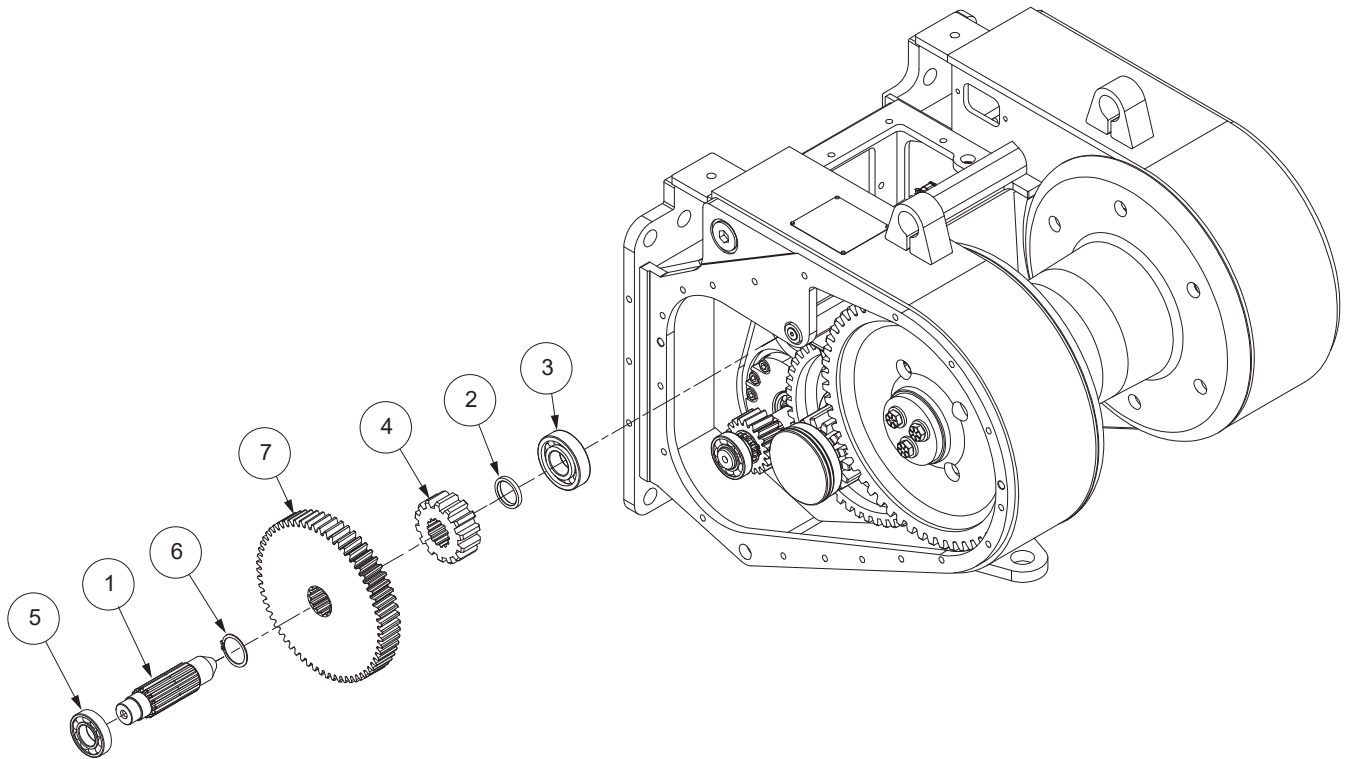
Item	Part No.	Qty	Description	Item	Part No.	Qty	Description
	<b>2318211</b>		<b>Brake-Off Assy, Clutch</b>				
1	2318171	1	. Gear - Spider	7	2304873W	11	. Disc, Friction
2	2318173	1	. Clutch Hub	8	2304874W	11	. Plate, Separator
3	2318172	1	. Bearing - Roller, Needle	9	18127W	5	. Capscrew
4	2318174	1	. Backing Plate	12	Y435306.35	1	. Snap Ring
5	2318200	2	. Needle Thrust Bearing	13	2318236	1	. Shim, .062
6	2318286	1	. Press Plate	15	12916W	1	. Snap Ring
				16	2318287	1	. Spacer

# Drum Shaft



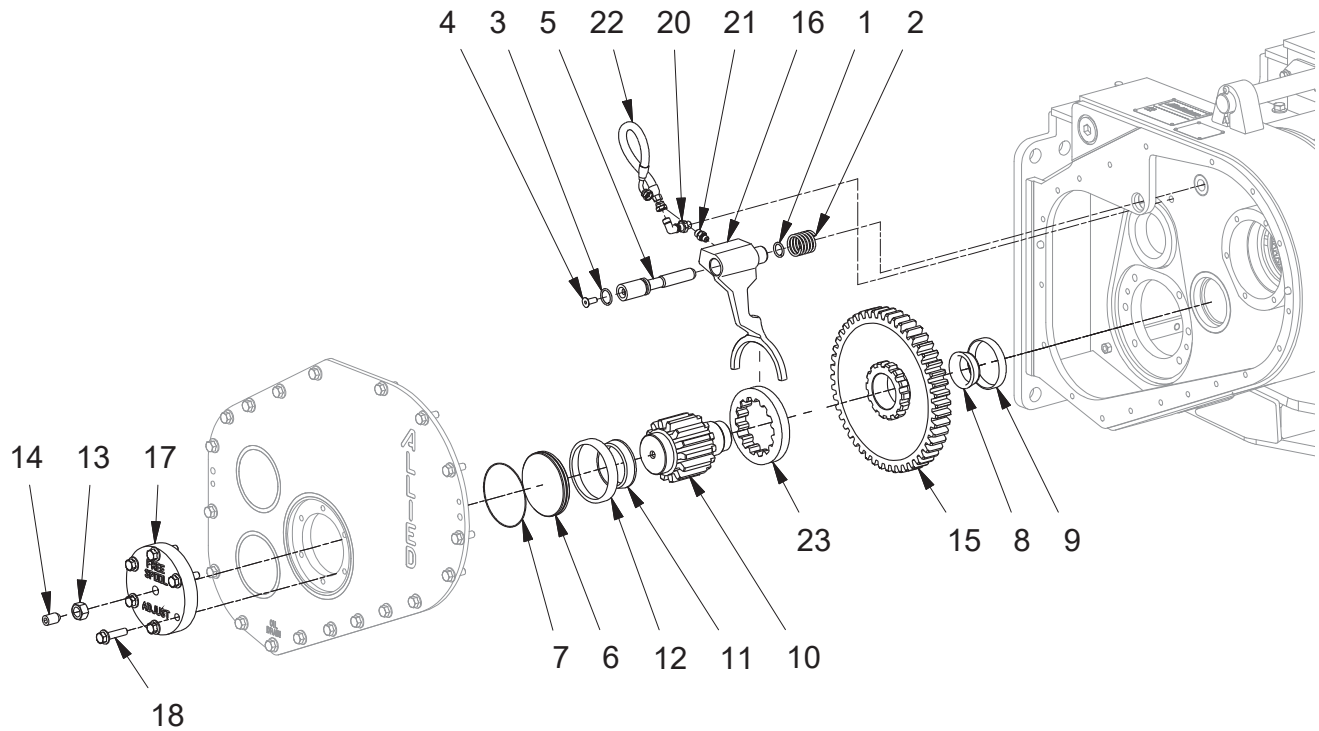
Item	Part No.	Qty	Description	Item	Part No.	Qty	Description
1	2303257W	AR	Shim, .005	12	339681W	1	Seal, Oil
2	1314503W	1	Keeper, Ferrule	13	2302333W	1	Gear, Drum
3	1300780W	1	Screw, Flange	14	2302335W	1	Spacer
4	2303256W	1	Retainer	15	219093W	2	Cone, Roller Bearing
5	15158W	6	Washer	16	219094W	2	Cup, Roller Bearing
6	16830W	6	Capscrew	17	2302379W	1	Shaft, Drum
7	2303902W	4	Screw, Flange	18	12956W	2	Ring, Snap
8	221775W	6	Washer	19	219095W	1	Bearing, Roller
9	**a Y17C-1024	6	Capscrew	20	2302334W	1	Shaft, Drum
9	**b ASC-503	3	Capscrew	21	203533	1	O-Ring
10	133523W	1	Seal, Oil	22	2302338W	1	Drum, Overwind
11	*a 2302336W	1	Retainer				
11	*b 2317725	1	Retainer	**Use 313022W Adhesive		*a	Use on H5CTEY46F
						*b	Use on H5CTEY46F

Shaft, Idler



Item	Part No.	Qty	Description	Item	Part No.	Qty	Description
1	2307282W	1	Shaft, Idler	6	12916W	1	Ring, Snap
2	2300842W	1	Spacer	7	2310904	1	Gear, 84T (Ratio #2 Only)
3	2304580W	1	Bearing, Cylinder Roller				
4	219066W	1	Gear, Pinion				
5	41207W	1	Bearing, Ball				

## Intermediate Gear Shaft With Freespool



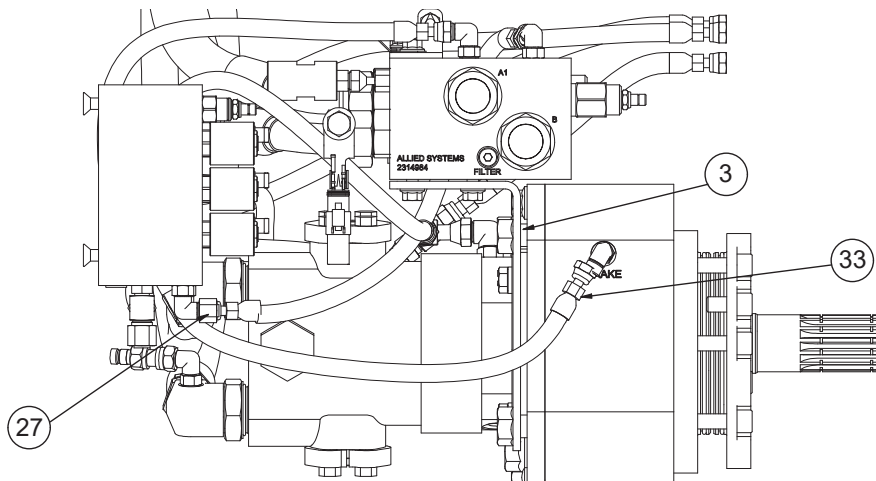
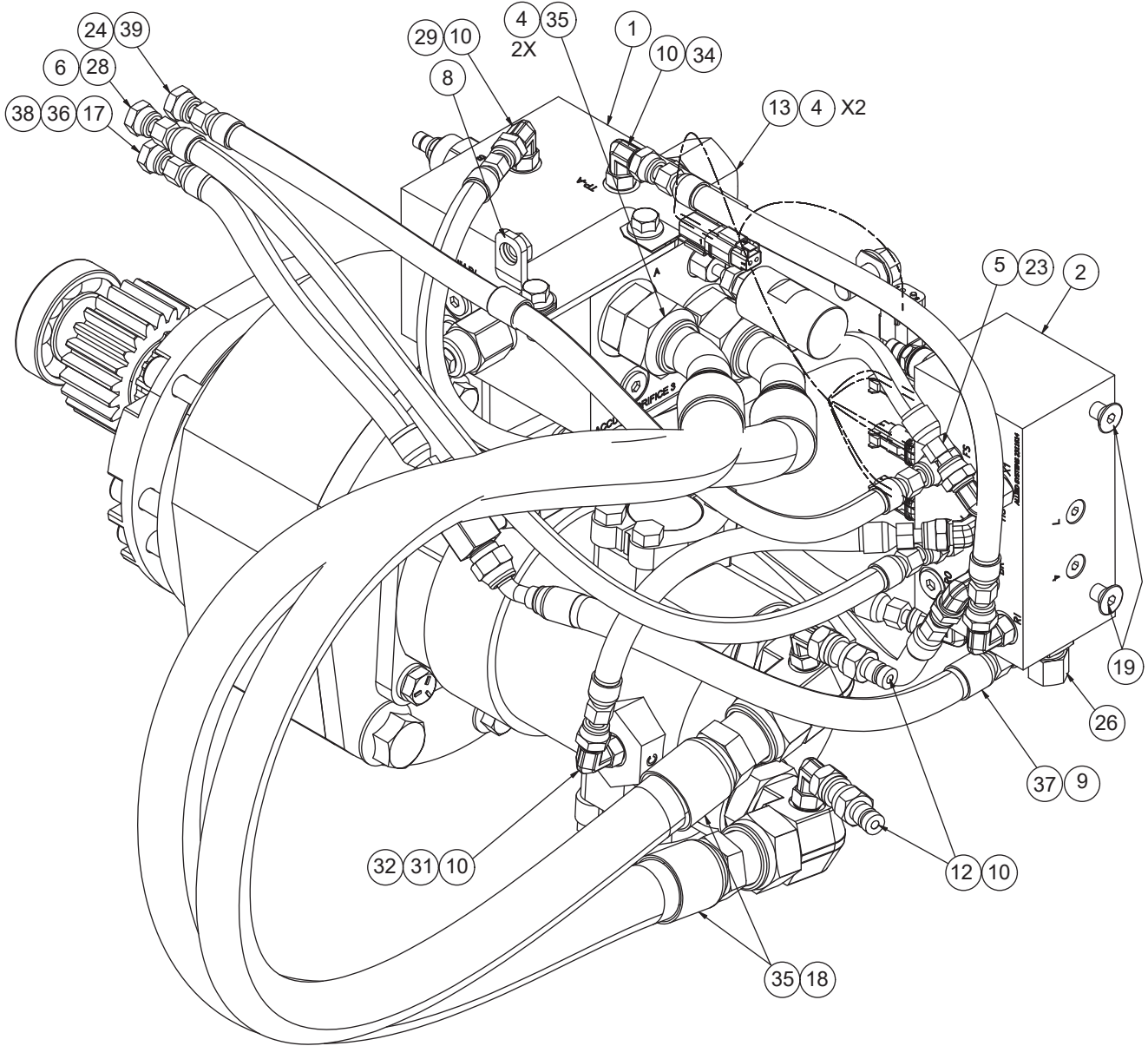
Item	Part No.	Qty	Description	Item	Part No.	Qty	Description
1	61142W	1	O-Ring	13	221717W	1	Nut
2	2303906W	1	Spring, Freespool	14	2304803W	1	Screw
3	61056W	1	O-Ring	15	225050W	1	Assy, Intermediate Gear
4	Y09G-0616	1	Capscrew	16	2303908W	1	Fork, Freespool Shifter
5	2303907W	1	Shaft, Freespool	17	2302625W	1	Housing, Freespool Adjust
6	2302624W	1	Piston, Freespool Adjust	18	2305415W	6	Screw, Flange
7	159940W	1	O-Ring	20	2307081W	1	Fitting
8	2305923W	1	Cone, Roller Bearing	21	231439	1	Fitting
9	45733W	1	Cup, Roller Bearing	22	*a 2307037W	1	Assy, Hose
10	2305915W	1	Shaft, Pinion	23	224108W	1	Clutch, Dental
11	219114W	1	Cone, Roller Bearing				
12	2302515W	1	Cup, Roller Bearing				

\*a Use 313022W Pipe Thread Sealant

**Section 3**  
**Hydraulics/Electrical/Controls**

# Hydraulic Group

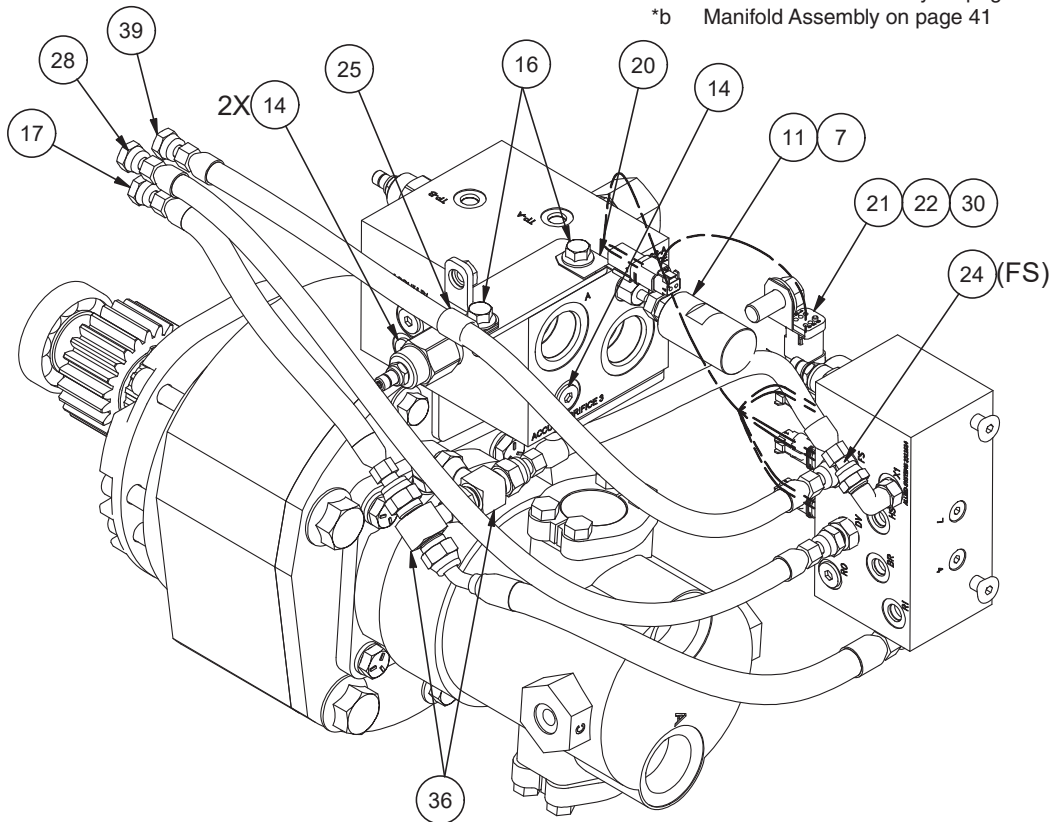
Tigercat 920 (H5CT2E\*\*Y46F)  
Page 1 of 2



**Hydraulic Group**  
 Tigercat 920 (H5CT2E\*\*Y46F)  
 Page 2 of 2

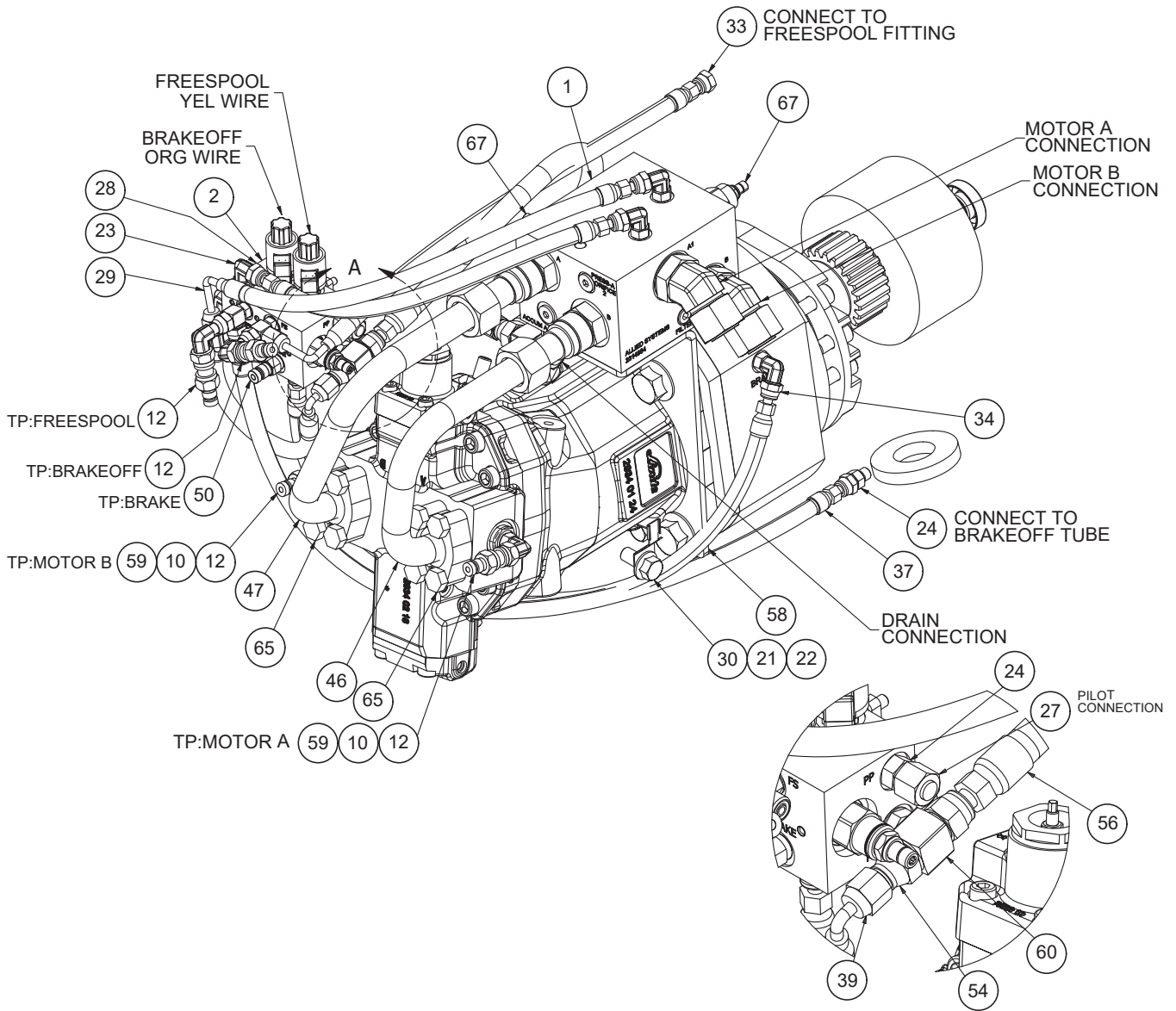
Item	Part No.	Qty	Description	Item	Part No.	Qty	Description	
1	*a	2314984	1	Assembly - Manifold	18	2307123W	2	Fitting
2	*b	2311614	1	Manifold, Ctrl	19	Y09G-0616	2	Capscrew
3		2314983	1	Bracket, Manifold	20	2311550	1	Clip, Harness Mounting
4		231444	4	Fitting	21	2313663	1	Clip - Harness, Mounting
5		2317608	1	Hose Assembly	22	2317561	1	Harness - Wire
6		R833103	1	Fitting	23	2311500	1	Fitting Assembly
7		2304147W	1	Fitting	24	231439	1	Fitting
8		2316646	1	Bracket, Support, Hose	25	209579	1	Clip, Insul
9		231465	1	Fitting	26	231822	1	Fitting
10		R833251	9	Fitting	27	232984	1	Fitting
11		2307291W	1	Switch	28	243178	1	Hose Assembly
12		2307625W	2	Fitting	29	592320	1	Hose Assembly
13		231820	2	Fitting	30	398817W	1	Screw, Flg
		232383	1	. .O-Ring	31	594490	1	Hose Assembly
14		229383	5	Fitting	32	R833200	1	Fitting
16		398567W	4	Screw, Flg	33	249485	1	Hose Assembly
17		2317730	1	Hose Assembly	34	2314278	1	Hose Assembly
					35	2317550	2	Hose Assembly
					36	232053	2	Fitting
					37	2317552	1	Hose Assembly
					38	R833257	1	Fitting
					39	2317553	1	Hose Assembly

\*a CBR Manifold Assembly on page 39  
 \*b Manifold Assembly on page 41



# Hydraulic Group

Tigercat 920 (H5CH2BY46F)  
Page 1 of 4



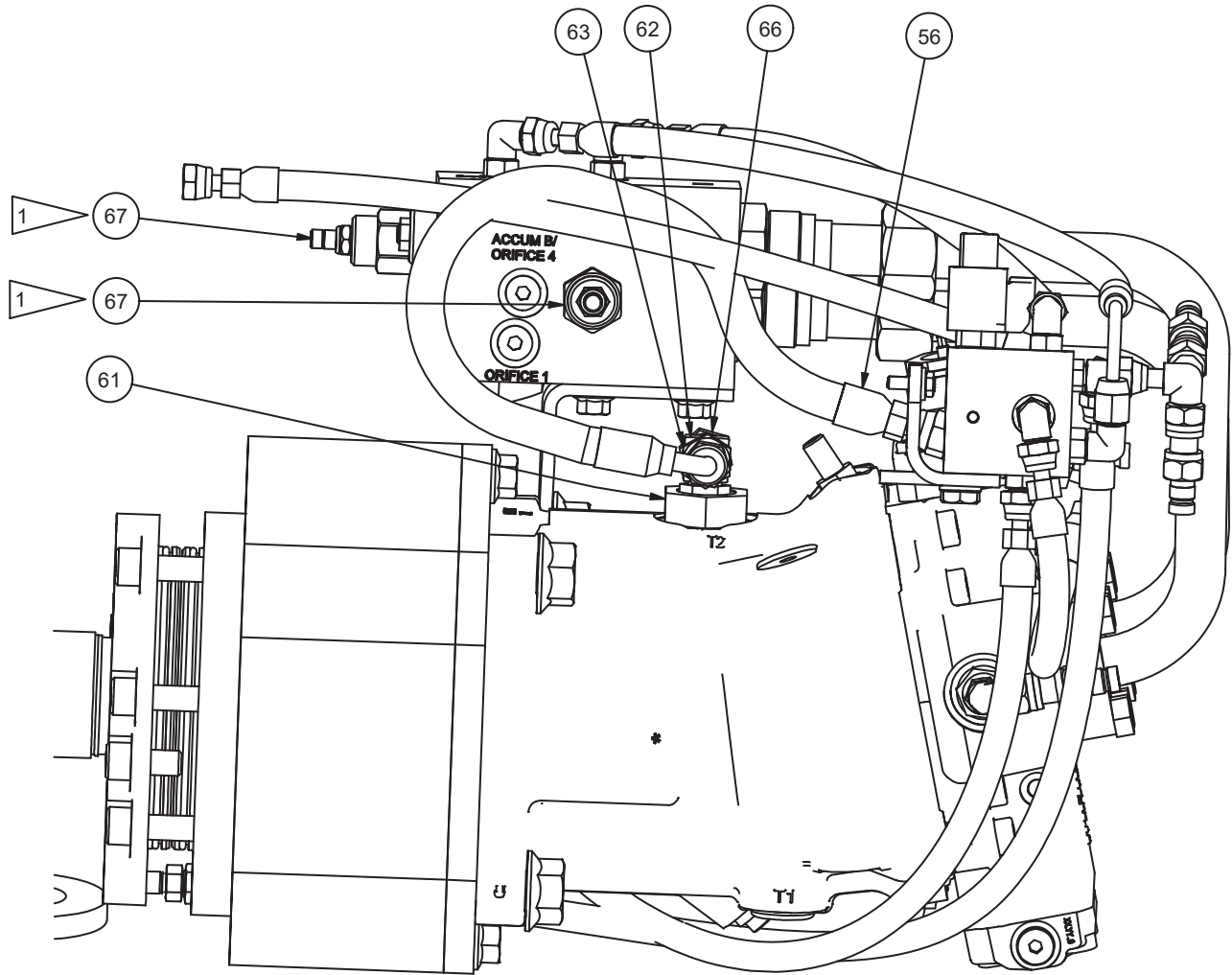
DETAIL A  
PILOT MANIFOLD DRAIN  
SOME PARTS REMOVED FOR CLARITY

**Hydraulic Group**  
Tigercat 920 (H5CH2BY46F)  
Page 2 of 4

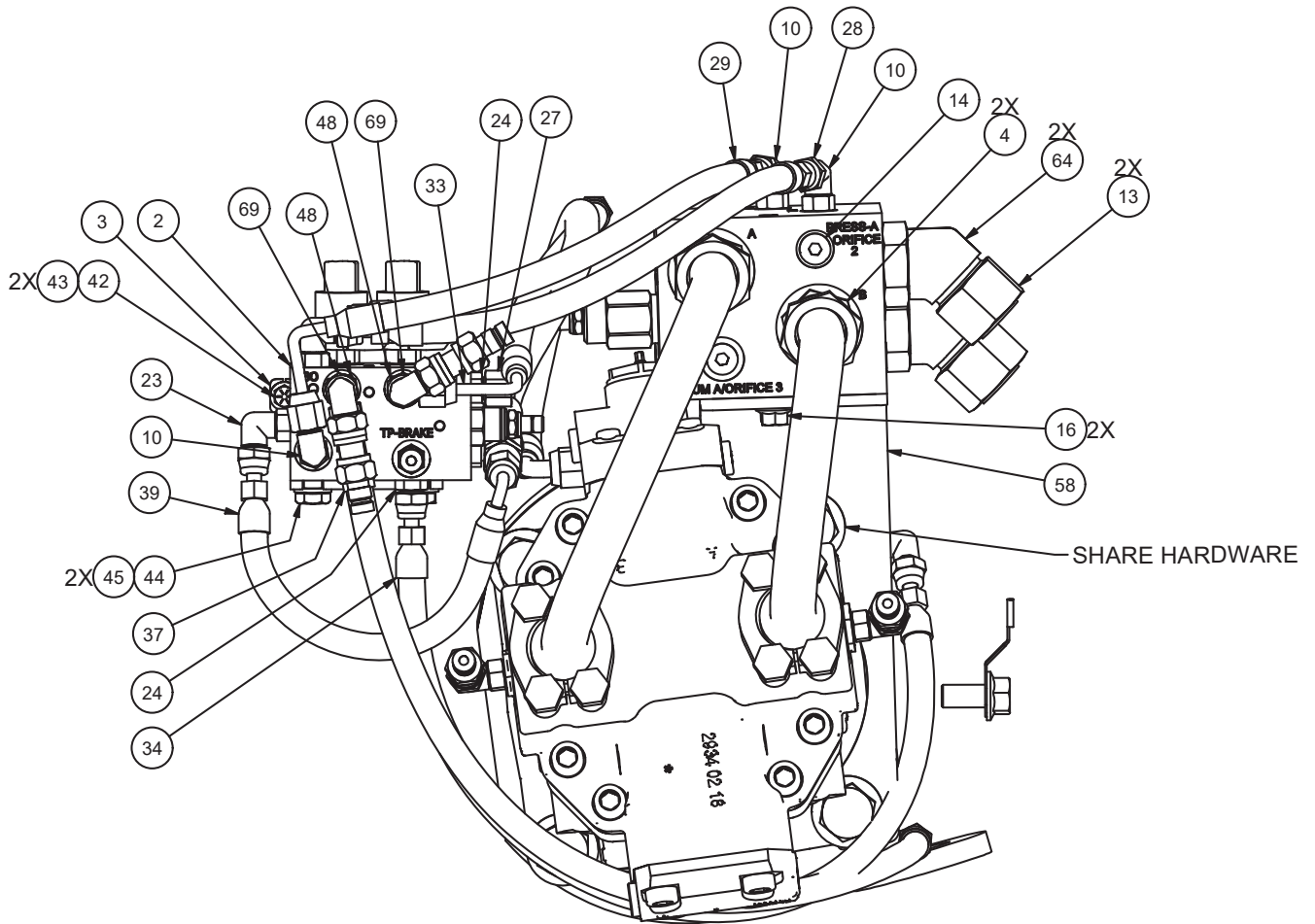
Item	Part No.	Qty	Description	Item	Part No.	Qty	Description
1	*a 2314984	1	Assembly - Manifold	44	293628W	2	Capscrew
2	*b 2313758	1	Manifold Assembly	45	296420W	2	Washer
3	2313443	1	Bracket - Manifold	46	2318320	1	Tube Assembly
4	231444	4	Fitting	47	2318321	1	Tube Assembly
10	R833251	5	Fitting	48	R833400	2	Fitting
12	2307625W	4	Fitting	50	R14040	1	Coupler, Male
13	231820	2	Fitting	54	242629	1	Fitting
14	229383	4	Fitting	56	237147	1	Hose Assembly
16	398567W	2	Screw, Flg	58	2318316	1	Bracket, Cbr Manifold
21	*d 2313663	1	Clip - Harness, Mounting	59	593818	2	Fitting
22	*d 2318330	1	Harness, Internal	60	231846	1	Fitting
23	2311500	1	Fitting Assembly	61	2318315	1	Fitting
24	231439	3	Fitting	62	231891	1	Fitting
27	232984	1	Fitting	63	R13521	1	Fitting
28	2318325	1	Hose Assembly	64	R833217	2	Fitting
29	2318326	1	Hose Assembly	65	592255	1	Kit, Split Flange
30	*d 398817W	1	Screw, Flg	66	R834253	1	Fitting
33	2313458	1	Hose Assembly	67	*c 245042-4950	1	Cartridge, Valve
34	243178	1	Hose Assembly	69	R833800	1	Fitting
37	2318328	1	Hose Assembly				
39	2316386	1	Hose Assembly				
42	224120W	2	Capscrew				
43	221763W	2	Washer				

\*a CBR Manifold Assembly on page 39  
\*b Manifold Assembly on page 40  
\*c Use (HCE-67) Loctite #515  
\*d Use (HCE-98) Gasket Eliminator

**Hydraulic Group**  
Tigercat 920 (H5CH2BY46F)  
Page 3 of 4

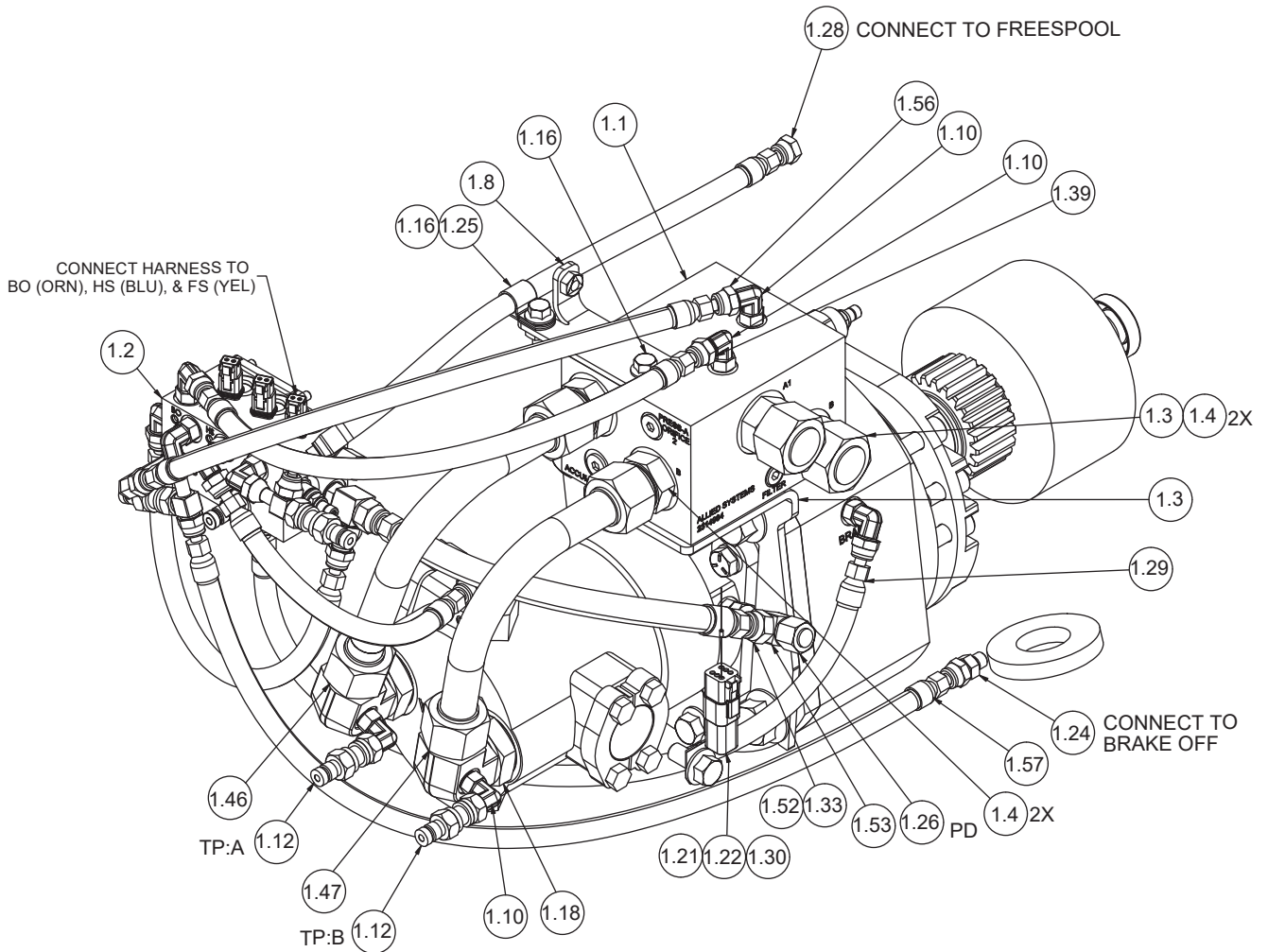


**Hydraulic Group**  
Tigercat 920 (H5CH2BY46F)  
Page 4 of 4



# Hydraulic Group

Tigercat 920 (H5CT2BY46F)  
Page 1 of 2

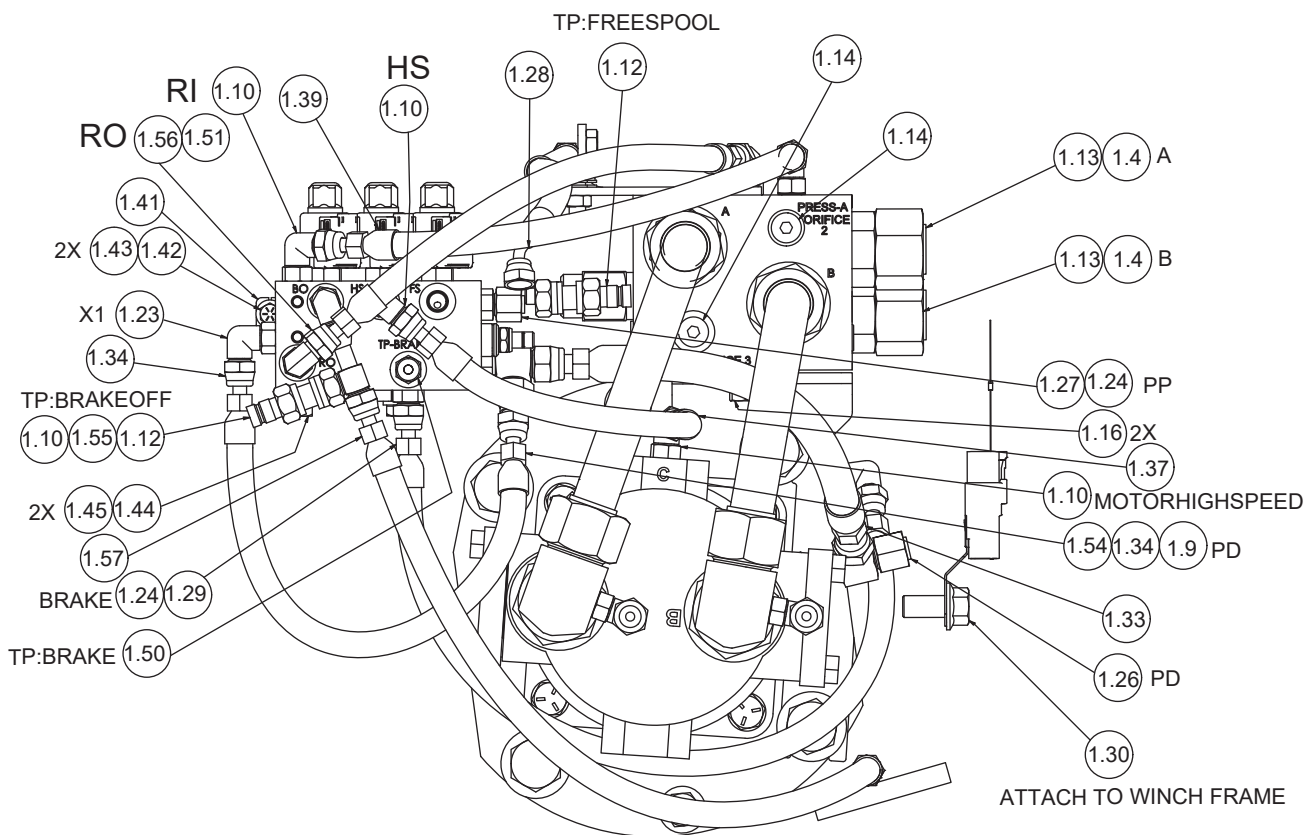


## Hydraulic Group

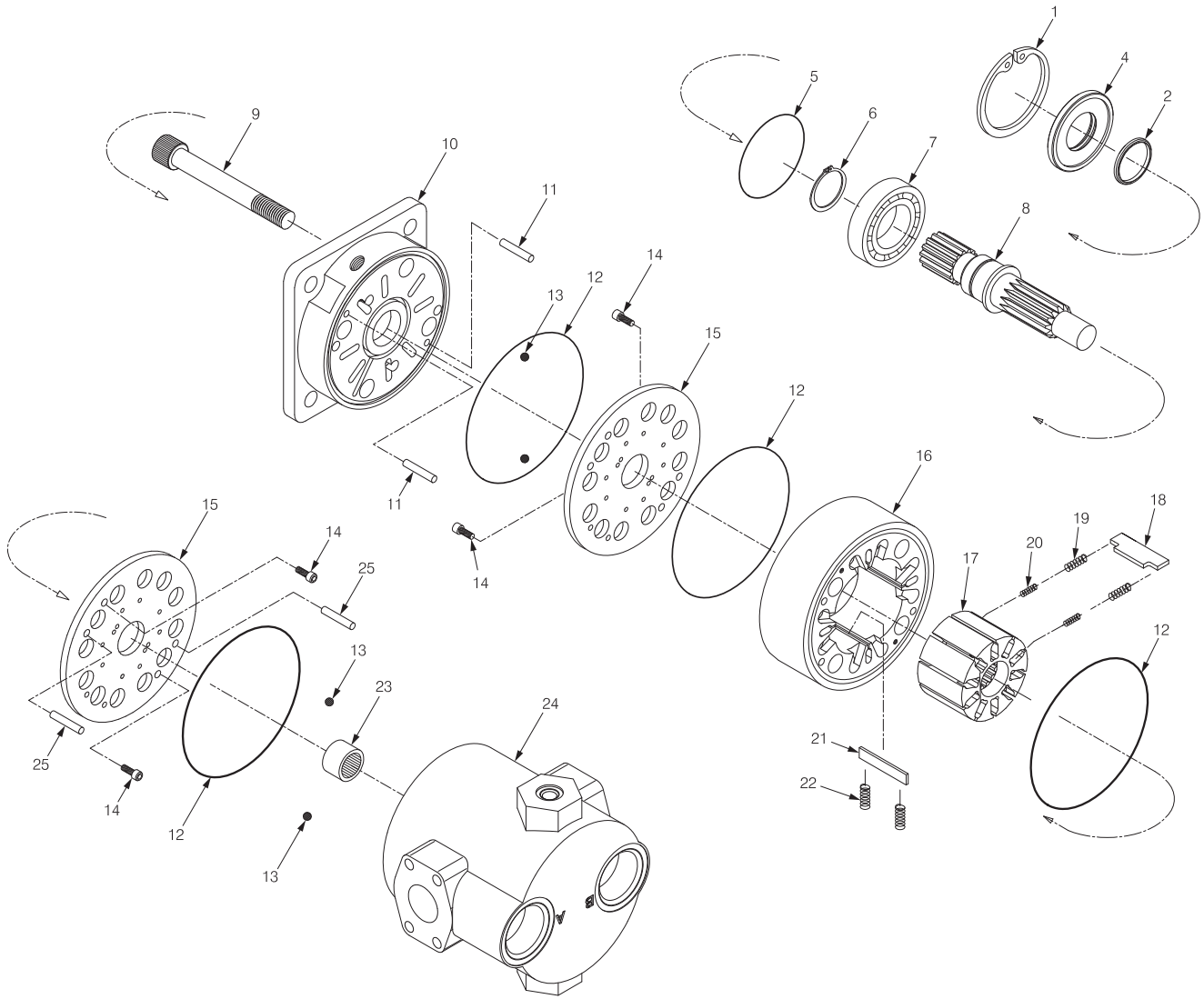
Tigercat 920 (H5CT2BY46F)  
Page 2 of 2

Item	Part No.	Qty	Description	Item	Part No.	Qty	Description
1.1	*a 2314984	1	Assembly - Manifold	1.33	2318277	1	Hose Assembly
1.2	*b 2313944	1	Manifold	1.34	239848	1	Hose Assembly
1.3	2314983	1	Bracket, Manifold	1.37	2318275	1	Hose Assembly
1.4	231444	4	Fitting	1.39	239847	1	Hose Assembly
1.8	2316646	1	Bracket, Support, Hose	1.41	2313443	1	Bracket - Manifold
1.9	231465	1	Fitting	1.42	224120W	2	Capscrew
1.10	R833251	9	Fitting	1.43	221763W	2	Washer
1.12	2307625W	4	Fitting	1.44	293628W	2	Capscrew
1.13	231820	2	.Fitting	1.45	296420W	2	Washer
	232383	1	. . O-Ring	1.46	2312197	1	Tube
1.14	229383	4	Fitting	1.47	2314986	1	Tube Assembly - Motor B
1.16	398567W	4	Screw, Flg	1.50	R14040	1	Coupler, Male
1.18	2307123W	2	Fitting	1.51	R833300	1	Fitting
1.21	2313663	1	Clip - Harness, Mounting	1.52	231440	1	Fitting
1.22	2318330	1	Harness, Internal	1.53	231955	1	Fitting
1.23	2311500	1	Fitting Assembly	1.54	242629	1	Fitting
1.24	231439	3	Fitting	1.55	236855	2	Fitting
1.25	209579	1	Clip, Insul	1.56	242357	1	Hose Assembly
1.26	231822	1	Fitting	1.57	2318276	1	Hose Assembly
1.27	232984	1	Fitting				
1.28	595815	1	Hose Assembly				
1.29	592322	1	Hose Assembly				
1.30	398817W	1	Screw, Flg				

\*a CBR Manifold Assembly on page 39  
\*b Manifold Assembly on page 41

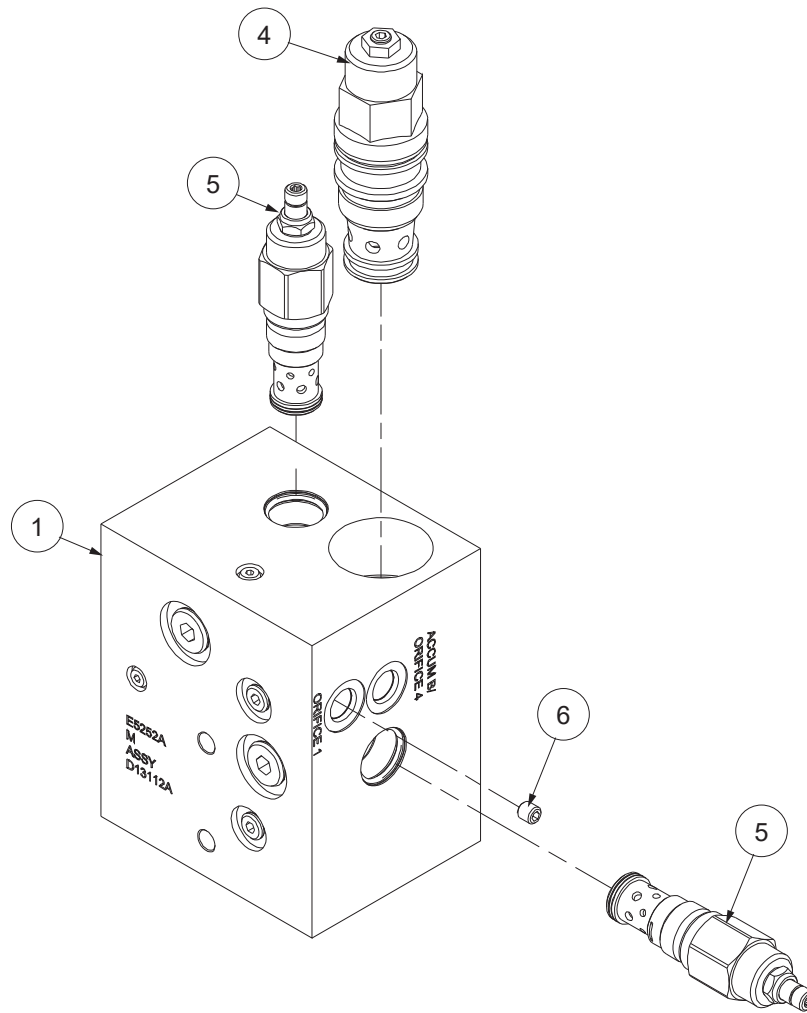


# Hydraulic Motor, 2-Speed



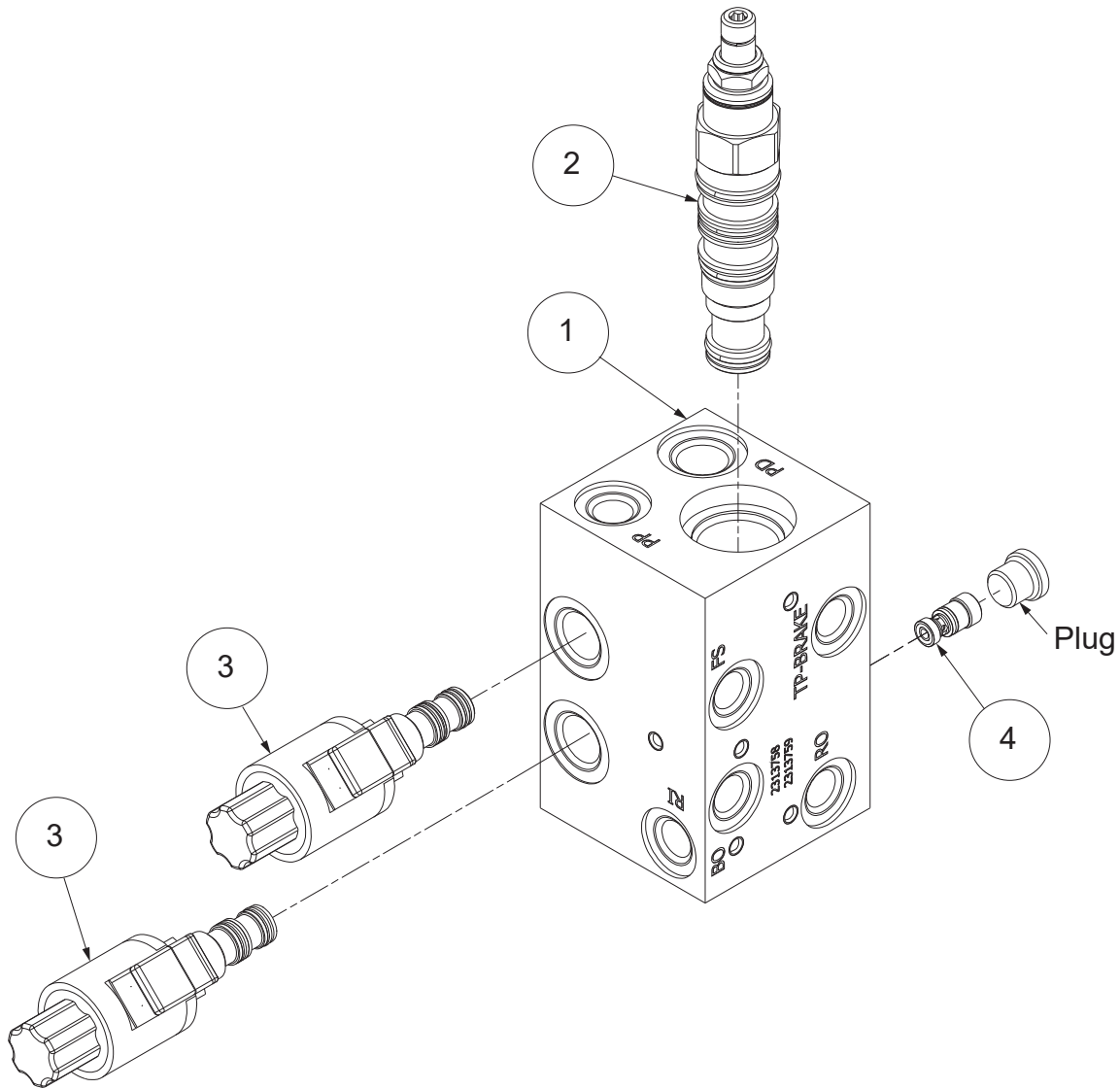
Item	Part No.	Qty	Description	Item	Part No.	Qty	Description
<b>2306938W Hydraulic Motor, 2-Speed</b>							
1	*a 238060	1	. Ring, Snap	15	2307962W	2	. Plate, Timing
2	*a 238056	1	. Seal	16	238070	1	. Stator
4	*a 238061	1	. Seal Plate	17	238073	1	. Rotor
5	*a 238058	1	. O-Ring	18	*b 238074	10	. Vane, Rotor
6	238062	1	. Ring, Snap	19	*b 238075	20	. Spring, Outer
7	238063	1	. Bearing	20	*b 238076	20	. Spring, Inner
8	238064	1	. Shaft	21	*b 238072	4	. Vane, Stator
9	238065	4	. Bolt	22	*b 238071	8	. Spring, Vane
10	NSS	1	. Housing	23	238078	1	. Bearing, Needle
11	238067	2	. Pin, Front Dowel	24	NSS	1	. Rear Housing
12	*a 238059	4	. O-Ring	25	238080	2	. Pin, Rear Dowel
13	238077	4	. Check, Ball				
14	238068	4	. Screw				
				*a	Included in Seal Kit 2307244W		
				*b	Included in Vane & Spring Kit 246726		

# Manifold Assembly



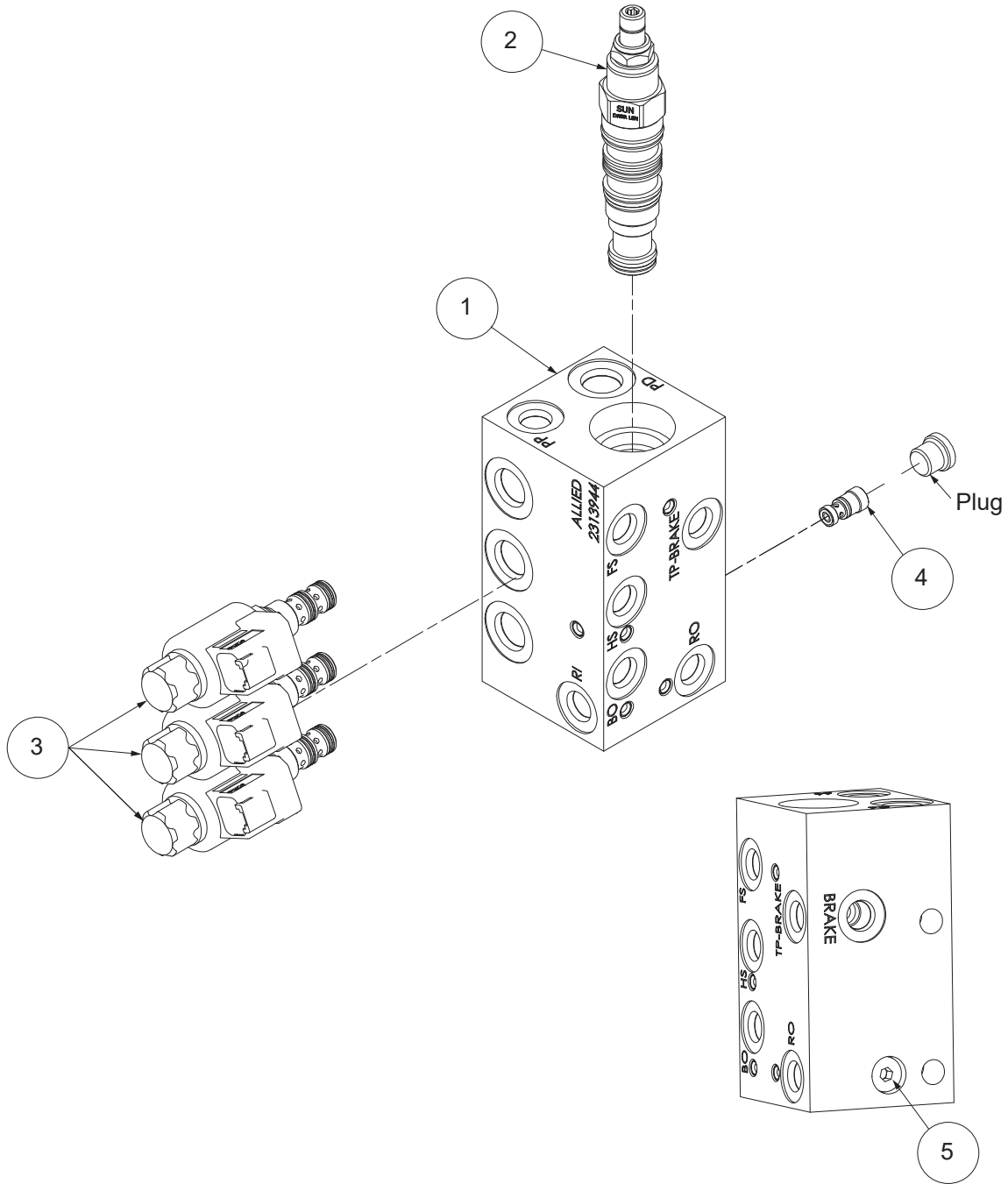
Item	Part No.	Qty	Description	Item	Part No.	Qty	Description
1	<b>2314984</b> 2314984	1	<b>Manifold Assembly</b> . CBR Manifold - Body	5	2307438W 259258	2 1	. Relief Valve . . Seal Kit
4	2312068 243815	1	. Counterbalance Valve . . Kit, Seal	6	2310181	2	. Plug

## Control Manifold Assembly (H5CH2BY46F)



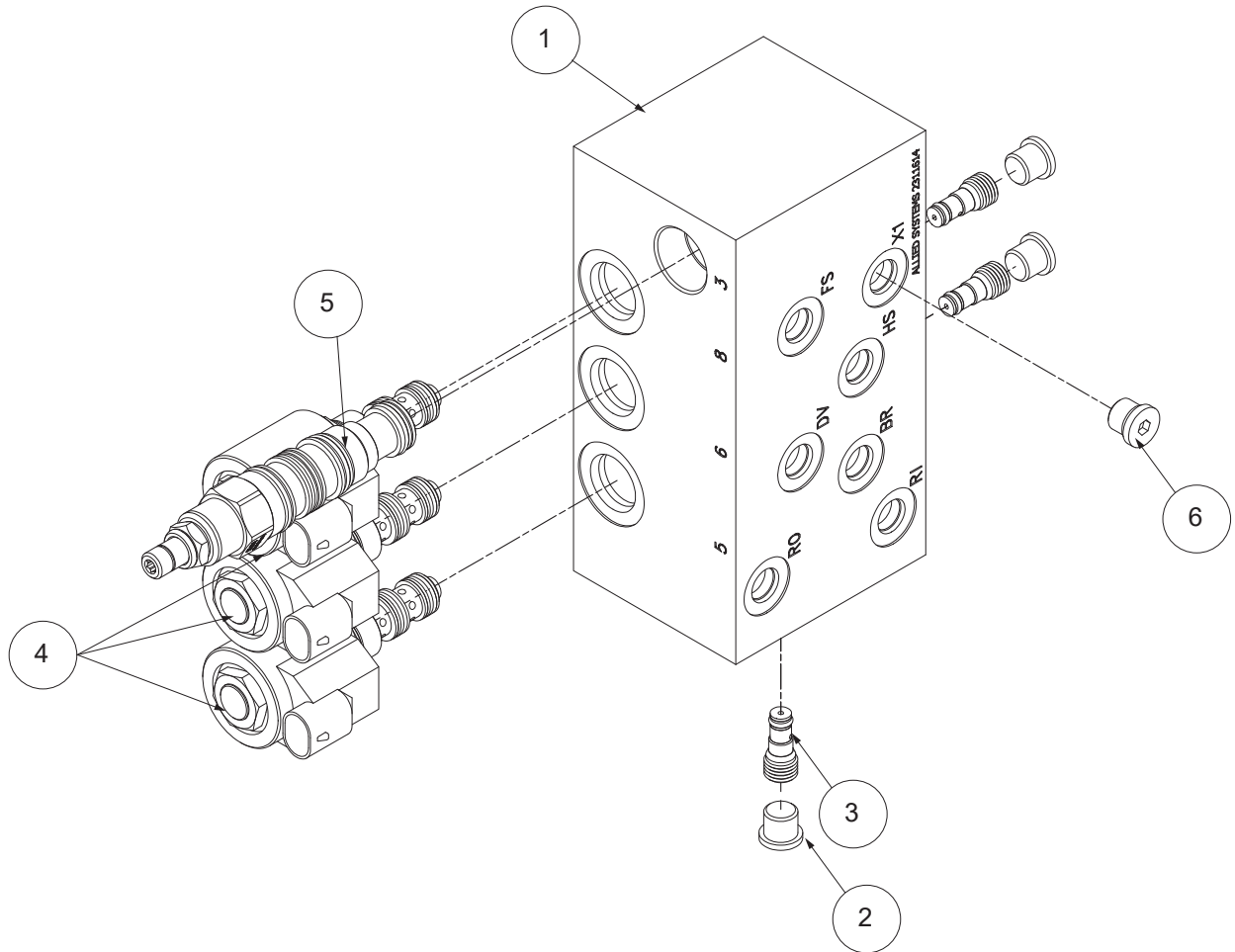
Item	Part No.	Qty	Description	Item	Part No.	Qty	Description
	<b>2313758</b>		<b>Manifold Assembly</b>				
1	2313759	1	. Manifold, Body, Control	3	2312073	2	. Valve, Solenoid
2	2311592	1	. Valve, Brake		2312111	1	.. Seal Kit
	252566	1	.. Seal Kit	4	2312074	1	. Valve, Shuttle
					2312112	1	.. Seal Kit

## Control Manifold Assembly (H5CT2BY46F)



Item	Part No.	Qty	Description	Item	Part No.	Qty	Description
	<b>2313944</b>		<b>Manifold Assembly</b>				
1	2313943	1	. Manifold - Body, Control	3	2312073	3	. Valve, Solenoid
2	2311592	1	. Valve - Directional		2312111	1	.. Seal Kit
	252566	1	.. Seal Kit	4	2312074	1	. Valve, Shuttle
					2312112	1	.. Seal Kit
				5	235387	1	. Fitting

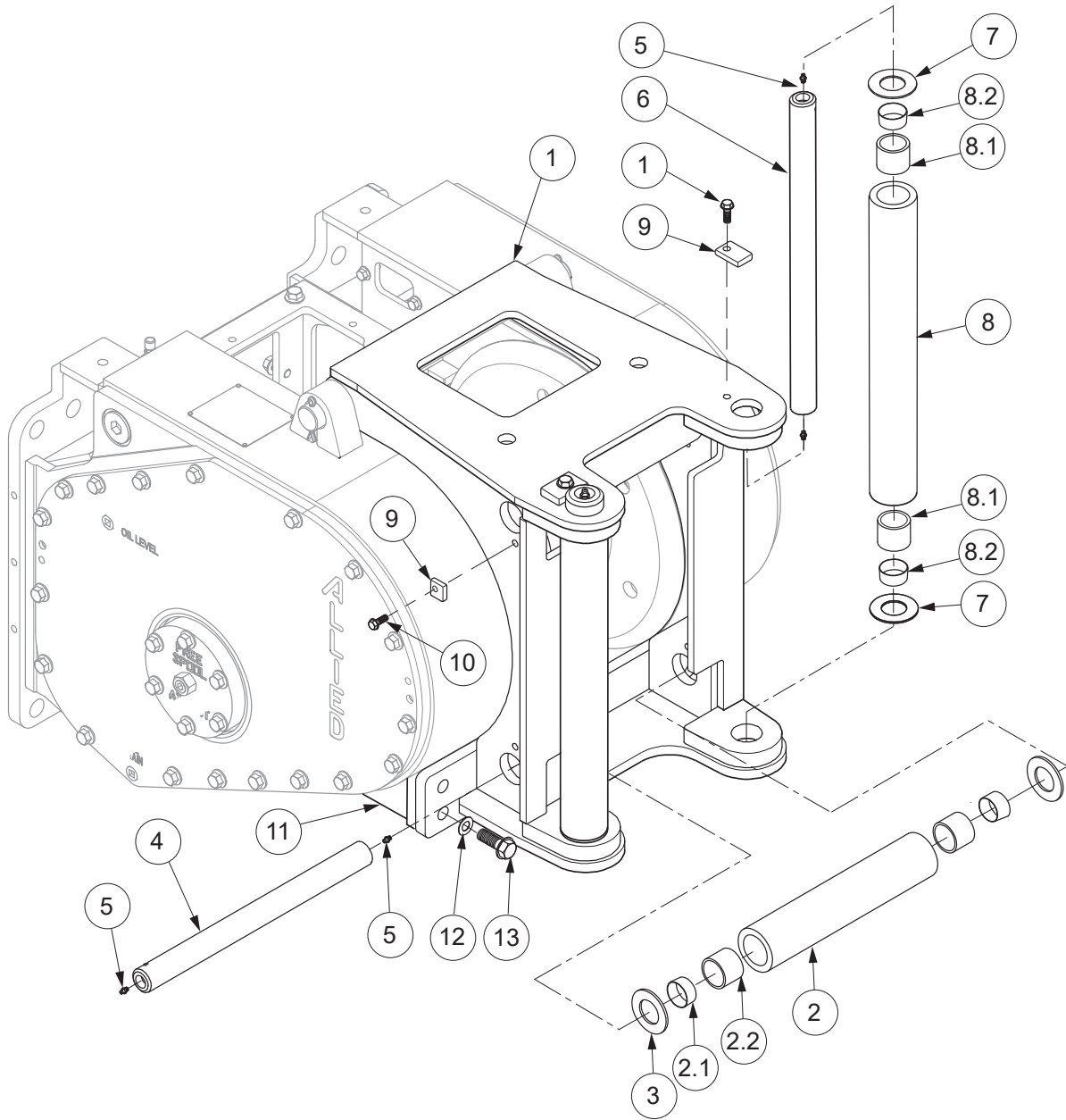
## Control Manifold Assembly (H5CT2EY46F)



Item	Part No.	Qty	Description	Item	Part No.	Qty	Description
	<b>2311614</b>		<b>Manifold Assembly</b>				
1	NSS	1	.Body - Not Sold Separately	4	2310430	3	. Valve, Cartridge
2	222442W	3	. Fitting		R15668	1	.. Kit, Seal
3	2307227W	3	. Valve, Shuttle		252134	1	.. Cartridge, Valve
	2307231W	1	.. Kit - Seal		2313921	1	.. Coil
				5	2311592	1	. Valve - Directional
					252566	1	.. Seal Kit
				6	235387	1	. Fitting

**Section 4**  
**Optional Equipment**

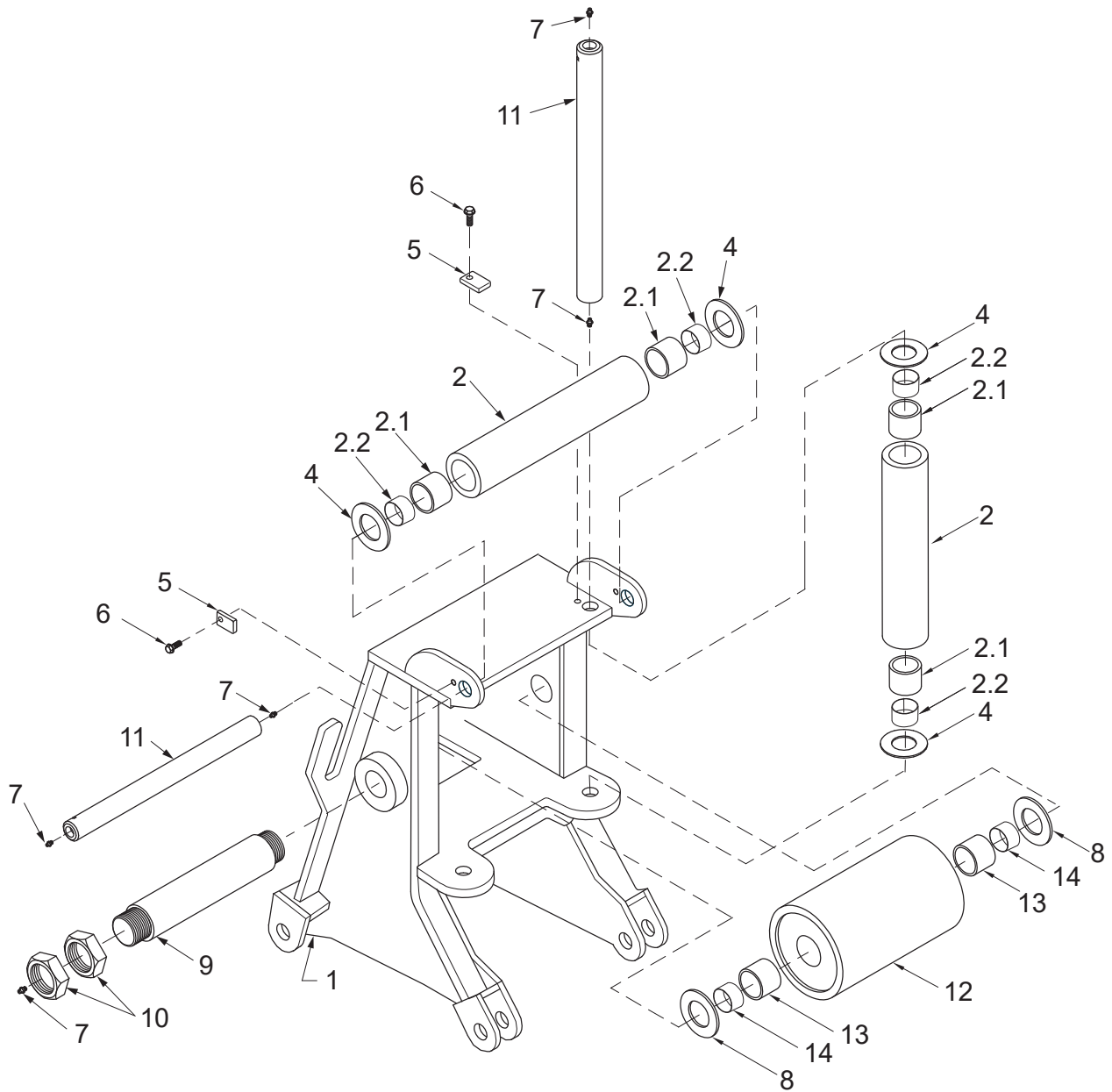
Fairlead



A = 3-Roller Fairlead  
 B = 4-Roller Fairlead

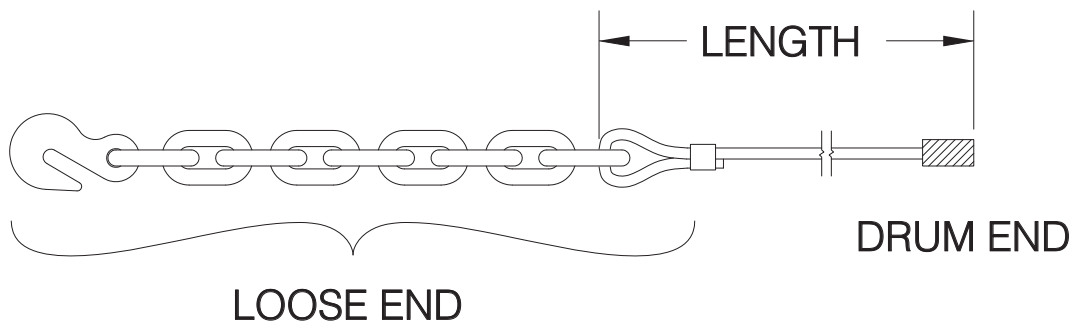
Item	Part No.	Qty A/B	Description	Item	Part No.	Qty A/B	Description
	<b>2307784W</b>	<b>1--</b>	<b>Fairlead, 3-Roller</b>	7	331767W	4/4	. Washer
	<b>2306335W</b>	<b>--1</b>	<b>Fairlead, 4-Roller</b>	8	2301907W	2/2	. Assy Roller
1	2306333W	1/1	. Frame	8.1	2301742W	2/2	. . Spacer
2	2301727W	1/2	. Assy Roller	8.2	35135W	2/2	. . Bushing
2.1	2570W	2/4	. . Bushing	9	2301706W	3/4	. Keeper
2.2	2301961W	2/4	. . Spacer	10	398817W	3/4	. Screw, Flange
3	33394W	2/2	. Washer	11	2306330W	2/2	Block, Mounting
4	2301722W	1/2	. Shaft	12	221777W	4/4	Washer
5	16001W	8/8	. Fitting, Lube	13	221657W	4/4	Capscrew
6	2306572W	2/2	. Shaft				

# Arch Assembly

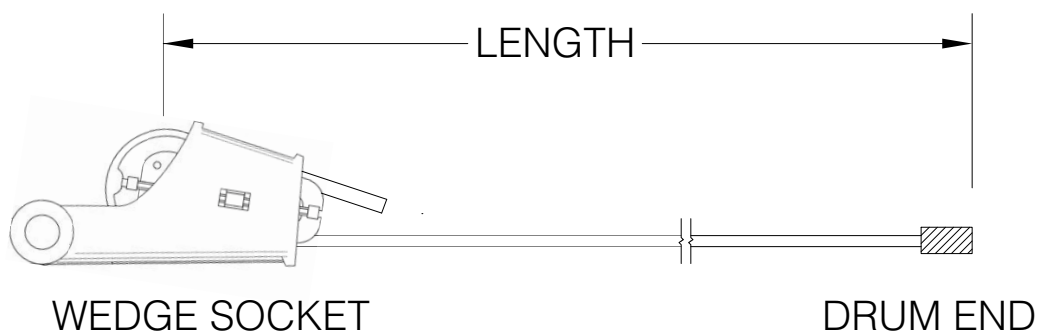


Item	Part No.	Qty	Description	Item	Part No.	Qty	Description
	<b>2301923W</b>		<b>Assy Arch</b>				
1	2301922W	1	. Arch	7	16001W	8	. Fitting, Lube
2	2301910W	3	. Assy Roller	8	2821W	2	. Washer
2.1	2301742W	2	.. Spacer	9	2302120W	1	. Shaft
2.2	35135W	2	.. Bushing	10	221336W	4	. Nut
4	331767W	6	. Washer	11	2301919W	3	. Shaft
5	2301706W	3	. Keeper	12	2301925W	1	. Roller
6	398817W	3	. Capscrew	13	2301927W	2	.. Spacer
				14	2817W	2	.. Bushing

**Wire Rope Assemblies**



**Figure A**



**Figure B**

Wire Rope Diameter Dia (in)	Wire Rope	Tail Chain & Hook
	Breaking Strength New (lbs)	Working Load Limit (lbs) 3.5:1 Design Factor
5/8	41,200	13,000
3/4	58,800	34,200
7/8	79,600	34,200

**⚠ CAUTION**

**Do not use larger than 5/8" diameter wire rope  
if winch is equipped with arch assembly.**

Part No.	Wire Diameter	Length FT (M)	Part No.	Wire Diameter	Length FT (M)
WR5-279L	5/8"	279 (85) *c			
WR5-423L	5/8"	423 (129) *a			
WR6-197L	3/4"	197 (60) *c			
WR6-298L	3/4"	298 (91) *a			
WR7-142L	7/8"	142 (43) *c			
WR7-215L	7/8"	215 (66) *a			
YS7-215LWS	7/8"	215 (66) *b			

\*a WR Series Wire Rope (Illustrated in Figure A)  
 \*b YS Series Wire Rope (Illustrated in Figure B)  
 \*c Length to fill drum to 2/3 capacity (recommended)  
 \*d Length to fill drum to full capacity

**Section 5**  
**Recommended Service Parts, Intervals & Kits**

## Recommended Winch Service Intervals and Kits

Following the service schedule recommended here to help keep tractor winch downtime to a minimum, optimize winch operation, and extend the life of your

investment. See Table 1 for recommended service intervals, and Table 2 for recommended service kits.

Hydraulic Winch Maintenance					
Recommended Winch Service Intervals					
Hours or **	Months **	Filter ***	Winch Gear Oil	Brake & Clutch	Major Overhaul
First 250	1	Change			
Every 500	3	Change			
Every 2,000	12		Change		
Every 5,000				*Inspect	
Every 10,000					*Evaluate
Lube rollers and check oil level and filter light every week.					

\* Evaluate = Service based on average winch use;

If used more than once a day, perform an overhaul.

If used less than once a day, remove covers and check to determine need.

\* Inspect = Disassemble and inspect for wear.

\*\* Service winch using the tractor's hour meter or the length of time the winch is mounted to the tractor, whichever occurs first.

\*\*\* Follow tractor schedule if using tractor filter.

Table 1 Recommended Winch Service Intervals

Service Kits for H5C Winches			
Service Description	Kit Description	Winch Serial Number	Kit Part#
Filter change	Filter kit	All	Refer to tractor operator and service manuals
Complete oil change (every 1,000 hours)	N/A	All	Check our website for current operator's and service manuals for appropriate oils
Clutch and brake overhaul (every 5,000 hours)	Motor, reducer & brake assembly rebuild kit	All	2314659
Major overhaul (every 10,000 hours)	Intermediate/drum shaft & brake assembly rebuild kit	All	2311896

Table 2 Routine Maintenance Kits

## H5C Hydraulic Winch Recommended Service Parts

The following pages list some of the service parts and kits that are available for your Allied H5C Winch. Page 50 includes lists of gaskets and seals. Keep these parts in stock at all times for regular maintenance. Order parts from the table based on your winch.

Page 50 and page 51 contain kits for 5,000 hour and 10,000 hour scheduled maintenance. Order these kits in preparation for these intervals. Each kit includes all parts listed in the table. Order parts from the table based on your winch.

Page 46 contains a list of wire rope assemblies. Order parts as required and as relevant for your installation.

**Note: Allied Winch parts manuals are available for no charge download at <http://www.alliedsystems.com/pubs/pubs.htm>.**

Gaskets & Seals		Order as Required		
Applies to: H5CT & H5CH Winches mounted on Tigercat (Y46F)				
Allied P/N	Description	Quantity on Winch	See Parts Manual Page	Order Quantity
252566	Seal Kit, Directional Valve (P/N 2311592)	1	Control Manifold Assembly	
2312111	Seal Kit, Cartridge Valve (P/N 2312073)	2	Control Manifold Assembly	
2312112	Seal Kit, Shuttle Valve (P/N 2312074)	1	Control Manifold Assembly	
243815	Seal Kit, Counterbalance Valve (P/N 2312068)	1	CBR Manifold Assembly	
259258	Seal Kit (Buna), Relief Valve (P/N 2307438W)	2	CBR Manifold Assembly	

Motor, Reducer & Brake Assembly Rebuild Kit, P/N: 2312857				
Applies to: All				
Service Interval: Every 5,000 Hours				
Allied P/N	Description	Quantity in Kit	See Parts Manual Page	Order Quantity
<b>2312857</b>	<b>Kit, Motor, Reducer &amp; Brake Assy Rebuild</b>	<b>1</b>		
12916W	. Ring, Snap	2	Motor Shaft	
12944W	. Ring, Snap	1	Motor Shaft	
2306073W	. Seal, Rotary	2	Hydraulic Group	
89776W	. O-Ring	3	Hydraulic Group	
86596W	. O-Ring	1	Hydraulic Group	
87287W	. O-Ring	1	Motor Shaft	
334475W	. Ring, Snap	1	Motor Shaft	
12944W	. Ring, Snap	1	Motor Shaft	
246722	. Kit, Seal	1	Hydraulic Motor	

**Intermediate/Drum/Idler Shaft, Motor and Brake Assembly Rebuild Kit, P/N: 2311896****Applies to: All****Service Interval: Every 10,000 hours**

Allied P/N	Description	Quantity in Kit	See Parts Manual Page	Order Quantity
<b>2311896</b>	<b>Kit, Intermediate, Idler, Drum Shaft, Motor &amp; Brake Assembly Rebuild</b>	<b>1</b>		
41207W	. Bearing, Ball	1	Motor Shaft	
41210W	. Bearing, Ball	1	Motor Shaft	
2306198W	. Disc, Friction	7	Motor Shaft	
2304874W	. Plate, Separator	8	Motor Shaft	
218214	. O-Ring	1	Intermediate Gear Shaft	
212380	. O-Ring	1	Intermediate Gear Shaft	
159940W	. O-Ring	1	Intermediate Gear Shaft	
2305923W	. Cone, Roller Bearing	1	Intermediate Gear Shaft	
45733W	. Cup, Roller Bearing	1	Intermediate Gear Shaft	
219114W	. Cone, Roller Bearing	1	Intermediate Gear Shaft	
2302515W	. Cup, Roller Bearing	1	Intermediate Gear Shaft	
133523W	. Seal, Oil	1	Drum Shaft	
339681W	. Seal, Oil	1	Drum Shaft	
219093W	. Cone, Roller Bearing	1	Drum Shaft	
219094W	. Cup, Roller Bearing	1	Drum Shaft	
12956W	. Ring, Snap	2	Drum Shaft	
219095W	. Bearing, Roller	1	Drum Shaft	
203533	. O-Ring	1	Drum Shaft	
2304580W	. Bearing, Cylinder Roller	1	Idler Shaft	
41207W	. Bearing, Ball	1	Idler Shaft	
12916W	. Ring, Snap	1	Idler Shaft	

Wire Rope Assemblies		Order as Required		
Allied P/N	Description	Length	Will Fill Drum To:	Order Quantity
WR5-279L	Wire Rope Assy 5/8" TC	279' (85 M)	2/3 Capacity (Recommended)	
WR5-423L	Wire Rope Assy 5/8" TC	423' (129 M)	Full Capacity	
YS5-279LWS	Wire Rope Assy 5/8" WS	279' (85 M)	2/3 Capacity (Recommended)	
YS5-423LWS	Wire Rope Assy 5/8" WS	423' (129 M)	Full Capacity	
WR6-197L	Wire Rope Assy 3/4" TC	197' (60 M)	2/3 Capacity (Recommended)	
WR6-298L	Wire Rope Assy 3/4" TC	298' (91 M)	Full Capacity	
YS6-197LWS	Wire Rope Assy 3/4" WS	197' (60 M)	2/3 Capacity (Recommended)	
YS6-298LWS	Wire Rope Assy 3/4" WS	298' (91 M)	Full Capacity	
WR8-142L	Wire Rope Assy 7/8" TC	142' (43 M)	2/3 Capacity (Recommended)	
WR7-215L	Wire Rope Assy 7/8" WS	215' (66 M)	Full Capacity	
YS7-142LWS	Wire Rope Assy 7/8" TC	142' (43 M)	2/3 Capacity (Recommended)	
YS7-215LWS	Wire Rope Assy 7/8" WS	215' (66 M)	Full Capacity	

TC = Tail chain and hook

WS = Wedge socket

## Numerical Index

Part No.	Page	Item No.	Part No.	Page	Item No.	Part No.	Page	Item No.
2303221W	11	15.1	2318166	13	51.1	15290W	15	47.13
1314656W	11	15.2	2303848W	13	51.2	2317722	17	45.1
93927W	11	15.3	176208W	13	51.3	2317726	17	45.2
15256W	11	15.4	2304101W	13	51.4	27725	17	45.3
2307097W	11	31.1	16151W	13	51.5	39742W	17	45.4
16243W	11	31.2	188210W	13	51.6	398567W	17	45.5
2307342W	11	33.1	398567W	13	51.7	2304874W	17	45.6
2302513W	11	33.2	398817W	13	51.8	2304873W	17	45.7
398817W	11	33.3	313022W	13	51.9	2303715W	17	45.8
16243W	11	33.4	16243W	13	51.11	16202W	17	45.9
2318166	11	51.1	15315W	13	51.12	209511	17	45.1
2303848W	11	51.2	15290W	13	51.13	2317727	17	45.11
176208W	11	51.3	2318213	13	51.16	399784W	17	45.12
2304101W	11	51.4	2318191	13	51.18	205724	17	45.13
16151W	11	51.5	2318192	13	51.19	2307081W	17	45.14
188210W	11	51.6	2318193	13	51.2	R834100	17	45.15
398567W	11	51.7	2318194	13	51.21	249537	17	45.16
398817W	11	51.8	2318195	13	51.22	2317803	17	45.17
313022W	11	51.9	2318196	13	51.23	232257	17	45.18
16243W	11	51.11	2318186	13	51.24	2318214	18	1
15315W	11	51.12	39383W	13	51.25	2305100W	18	3
15290W	11	51.13	54127W	13	51.26	2318169	18	4
2318213	11	51.16	2318217	13	51.27	15895W	18	5
2318191	11	51.18	2318218	13	51.28	2318198	18	6
2318192	11	51.19	232257	13	51.29	Y060600-227	18	7
2318193	11	51.2	235387	13	51.3	16602W	18	8
2318194	11	51.21	2303221W	15	15.1	2318311	18	9
2318195	11	51.22	1314656W	15	15.2	2318181	18	2
2318196	11	51.23	93927W	15	15.3	2318182	19	1
2318186	11	51.24	15256W	15	15.4	Y25G-0410	19	2
39383W	11	51.25	2307097W	15	31.1	2300043W	19	3
54127W	11	51.26	16243W	15	31.2	15860W	19	4
2318217	11	51.27	2307342W	15	33.1	63105W	19	5
2318218	11	51.28	2302513W	15	33.2	15895W	19	6
232257	11	51.29	398817W	15	33.3	Y060600-227	19	7
235387	11	51.3	16243W	15	33.4	2318175	22	48.1
2303221W	13	15.1	2317721	15	47.1	2306078W	22	48.2
1314656W	13	15.2	2303848W	15	47.2	Y73G-0816	22	48.3
93927W	13	15.3	176208W	15	47.3	2306599W	22	48.4
15256W	13	15.4	2304101W	15	47.4	2306604W	22	48.5
2318324	13	31.1	16151W	15	47.5	89776W	22	48.6
16243W	13	31.2	188210W	15	47.6	86596W	22	48.8
2307342W	13	33.1	398567W	15	47.7	87287W	22	48.9
2302513W	13	33.2	398817W	15	47.8	2306077W	22	48.1
398817W	13	33.3	244260	15	47.9	2318238	22	48.11
16243W	13	33.4	16243W	15	47.11	2318239	22	48.13
			15315W	15	47.12			

Part No.	Page	Item No.	Part No.	Page	Item No.	Part No.	Page	Item No.
2306073W	22	48.14	R525293	24	20.29	2307282W	27	1
Y73G-0840	22	48.15	2311411	24	22.1	2300842W	27	2
334475W	22	48.16	2306494W	24	23.1	2304580W	27	3
219084W	22	48.17	2306214W	24	23.2	219066W	27	4
58954W	22	48.18	398828W	24	23.3	41207W	27	5
334442W	22	48.19	15158W	24	23.4	12916W	27	6
2306198W	22	48.2	18588W	24	23.5	2310904	27	7
2304874W	22	48.21	917373W	24	23.6	61142W	28	1
398820W	22	48.23	2306938W	24	25.1	2303906W	28	2
273338W	22	48.24	2318171	25	1	61056W	28	3
R833251	22	48.28	2318173	25	2	Y09G-0616	28	4
R525293	22	48.29	2318172	25	3	2303907W	28	5
2318178	22	48.3	2318174	25	4	2302624W	28	6
2318179	22	48.31	2318200	25	5	159940W	28	7
2318297	22	50.1	2318286	25	6	2305923W	28	8
2318170	22	50.1	2304873W	25	7	45733W	28	9
2306076W	22	50.2	2304874W	25	8	2305915W	28	10
2306214W	22	50.2	18127W	25	9	219114W	28	11
398828W	22	50.3	Y435306.35	25	12	2302515W	28	12
15158W	22	50.4	2318236	25	13	221717W	28	13
18588W	22	50.5	12916W	25	15	2304803W	28	14
2318307	22	51.1	2318287	25	16	225050W	28	15
2306938W	22	51.1	2303257W	26	1	2303908W	28	16
917373W	22	50.6	1314503W	26	2	2302625W	28	17
2314062	24	20.1	1300780W	26	3	2305415W	28	18
2306078W	24	20.2	2303256W	26	4	2307081W	28	20
Y73G-0816	24	20.3	15158W	26	5	231439	28	21
2306599W	24	20.4	16830W	26	6	2307037W	28	22
2306604W	24	20.5	2303902W	26	7	224108W	28	23
89776W	24	20.6	221775W	26	8	2314984	31	1
86596W	24	20.8	Y17C-1024	26	9	2311614	31	2
87287W	24	20.9	ASC-503	26	9	2314983	31	3
2306077W	24	20.1	133523W	26	10	231444	31	4
41210W	24	20.11	2302336W	26	11	2317608	31	5
12916W	24	20.12	2317725	26	11	R833103	31	6
41207W	24	20.13	339681W	26	12	2304147W	31	7
2306073W	24	20.14	2302333W	26	13	2316646	31	8
Y73G-0840	24	20.15	2302335W	26	14	231465	31	9
334475W	24	20.16	219093W	26	15	R833251	31	10
219084W	24	20.17	219094W	26	16	2307291W	31	11
12944W	24	20.18	2302379W	26	17	2307625W	31	12
334442W	24	20.19	12956W	26	18	231820	31	13
2306198W	24	20.2	219095W	26	19	232383	31	
2304874W	24	20.21	2302334W	26	20	229383	31	14
398820W	24	20.23	203533	26	21	398567W	31	16
R833251	24	20.28	2302338W	26	22	2317730	31	17

Part No.	Page	Item No.	Part No.	Page	Item No.	Part No.	Page	Item No.
2307123W	31	18	296420W	33	45	224120W	37	1.42
Y09G-0616	31	19	2318320	33	46	221763W	37	1.43
2311550	31	20	2318321	33	47	293628W	37	1.44
2313663	31	21	R833400	33	48	296420W	37	1.45
2317561	31	22	R14040	33	50	2312197	37	1.46
2311500	31	23	242629	33	54	2314986	37	1.47
231439	31	24	237147	33	56	R14040	37	1.5
209579	31	25	2318316	33	58	R833300	37	1.51
231822	31	26	593818	33	59	231440	37	1.52
232984	31	27	231846	33	60	231955	37	1.53
243178	31	28	2318315	33	61	242629	37	1.54
592320	31	29	231891	33	62	236855	37	1.55
398817W	31	30	R13521	33	63	242357	37	1.56
594490	31	31	R833217	33	64	2318276	37	1.57
R833200	31	32	592255	33	65	238060	38	1
249485	31	33	R834253	33	66	238056	38	2
2314278	31	34	245042-4950	33	67	238061	38	4
2317550	31	35	R833800	33	69	238058	38	5
232053	31	36	2314984	37	1.1	238062	38	6
2317552	31	37	2313944	37	1.2	238063	38	7
R833257	31	38	2314983	37	1.3	238064	38	8
2317553	31	39	231444	37	1.4	238065	38	9
2314984	33	1	2316646	37	1.8	NSS	38	10
2313758	33	2	231465	37	1.9	238067	38	11
2313443	33	3	R833251	37	1.1	238059	38	12
231444	33	4	2307625W	37	1.12	238077	38	13
R833251	33	10	231820	37	1.13	238068	38	14
2307625W	33	12	232383	37		2307962W	38	15
231820	33	13	229383	37	1.14	238070	38	16
229383	33	14	398567W	37	1.16	238073	38	17
398567W	33	16	2307123W	37	1.18	238074	38	18
2313663	33	21	2313663	37	1.21	238075	38	19
2318330	33	22	2318330	37	1.22	238076	38	20
2311500	33	23	2311500	37	1.23	238072	38	21
231439	33	24	231439	37	1.24	238071	38	22
232984	33	27	209579	37	1.25	238078	38	23
2318325	33	28	231822	37	1.26	NSS	38	24
2318326	33	29	232984	37	1.27	238080	38	25
398817W	33	30	595815	37	1.28	2314984	39	1
2313458	33	33	592322	37	1.29	2312068	39	4
243178	33	34	398817W	37	1.3	243815	39	
2318328	33	37	2318277	37	1.33	2307438W	39	5
2316386	33	39	239848	37	1.34	259258	39	
224120W	33	42	2318275	37	1.37	2310181	39	6
221763W	33	43	239847	37	1.39	2313759	40	1
293628W	33	44	2313443	37	1.41	2311592	40	2

Part No.	Page	Item No.	Part No.	Page	Item No.
252566	40		2301706W	45	5
2312073	40	3	398817W	45	6
2312111	40		16001W	45	7
2312074	40	4	2821W	45	8
2312112	40		2302120W	45	9
2313943	41	1	221336W	45	10
2311592	41	2	2301919W	45	11
252566	41		2301925W	45	12
2312073	41	3	2301927W	45	13
2312111	41		2817W	45	14
2312074	41	4	WR5-279L	46	
2312112	41		WR5-423L	46	
235387	41	5	WR6-197L	46	
NSS	42	1	WR6-298L	46	
222442W	42	2	WR7-142L	46	
2307227W	42	3	WR7-215L	46	
2307231W	42		YS7-215LWS	46	
2310430	42	4			
R15668	42				
252134	42				
2313921	42				
2311592	42	5			
252566	42				
235387	42	6			
2306333W	44	1			
2301727W	44	2			
2570W	44	2.1			
2301961W	44	2.2			
33394W	44	3			
2301722W	44	4			
16001W	44	5			
2306572W	44	6			
331767W	44	7			
2301907W	44	8			
2301742W	44	8.1			
35135W	44	8.2			
2301706W	44	9			
398817W	44	10			
2306330W	44	11			
221777W	44	12			
221657W	44	13			
2301922W	45	1			
2301910W	45	2			
2301742W	45	2.1			
35135W	45	2.2			
331767W	45	4			



To find a dealer in your area,  
Call: (503) 625-2560,  
Fax: (503) 625-7269 , or  
Email: [marketing@alliedsystems.com](mailto:marketing@alliedsystems.com), or  
Visit our website: <http://www.alliedsystems.com>

**Allied Systems**  
COMPANY

599029W-TIGERCAT 11/04/2025 Printed in U.S.A.