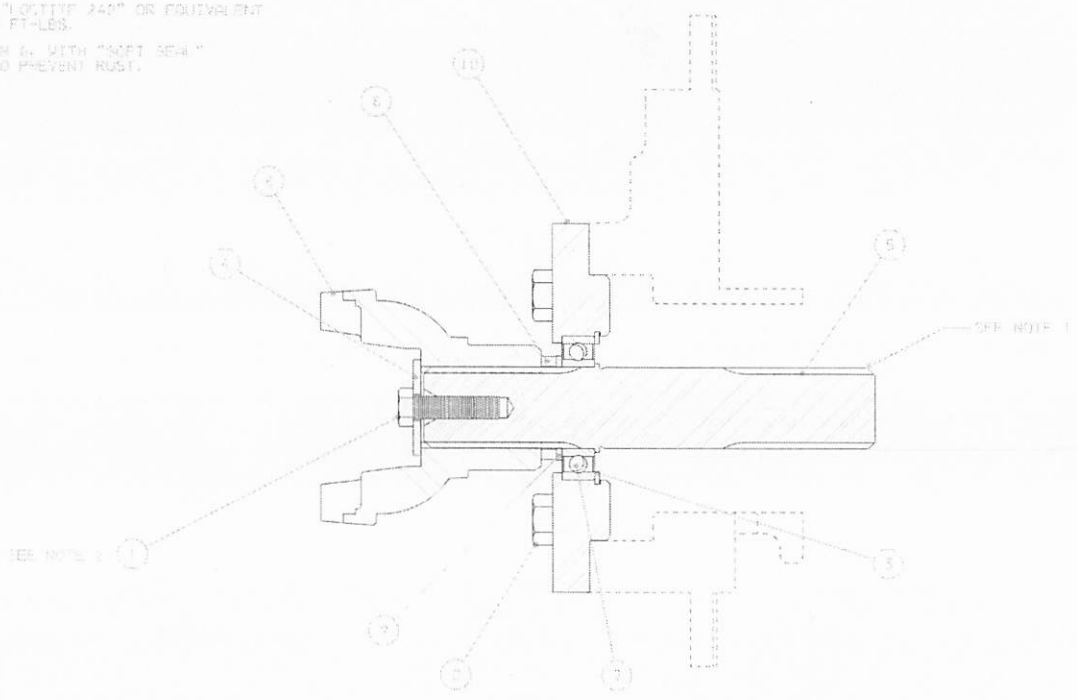


REV	DATE	BY	CHK	DESCRIPTION	DATE	DWG NO.	DATE
1	1/11/07	JP		RELEASED	1/11/07	64013	
2					070017		

NOTES:

1. COAT SPLINES OF M10 SHAFT, ITEM 5, WITH MULTI-PURPOSE GREASE BEFORE ASSEMBLY.
2. COAT THREADS OF BOLT, ITEM 4, WITH "LOCTITE 242" OR EQUIVALENT AT INSTALLATION AND TORQUE TO 50-60 FT-LBS.
3. COAT MACHINED FACE OF END YOKE, ITEM 6, WITH "SOFT SEAL" COAT OILER, IF 050157 OR EQUIVALENT TO PREVENT RUST.



SCB 7 CASE 1150K

1. DIMENSIONS AND TOLERANCES ARE PER ANSI Y 14.5-1993. 2. UNLESS OTHERWISE SPECIFIED, DIMENSIONS ARE IN INCHES. 3. DIMENSIONS IN PARENTHESES ARE FOR INFORMATION ONLY. 4. DIMENSIONS IN PARENTHESES ARE FOR INFORMATION ONLY. 5. DIMENSIONS IN PARENTHESES ARE FOR INFORMATION ONLY. 6. DIMENSIONS IN PARENTHESES ARE FOR INFORMATION ONLY. 7. DIMENSIONS IN PARENTHESES ARE FOR INFORMATION ONLY. 8. DIMENSIONS IN PARENTHESES ARE FOR INFORMATION ONLY. 9. DIMENSIONS IN PARENTHESES ARE FOR INFORMATION ONLY. 10. DIMENSIONS IN PARENTHESES ARE FOR INFORMATION ONLY.	TYPICAL PROJECTION 	UNLESS OTHERWISE SPECIFIED, DIMENSIONS ARE IN INCHES. DIMENSIONS IN PARENTHESES ARE FOR INFORMATION ONLY.	DATE: 1/11/07 SCALE: 1:2	F LEAKE R RENFRO D SWENSON	DATE: 1/11/07 SCALE: 1:2	TITLE: ADAPTER GROUP	Dwg No: 64013 Model: 70A Part No: 070017	
	PROPRIETARY <input checked="" type="checkbox"/> PROPRIETARY <input type="checkbox"/> NON-PROPRIETARY	DO NOT SCALE DIM. <input checked="" type="checkbox"/> DO NOT SCALE DIM. <input type="checkbox"/> DO NOT SCALE DIM.	DIMENSIONS IN INCHES <input checked="" type="checkbox"/> DIMENSIONS IN INCHES <input type="checkbox"/> DIMENSIONS IN INCHES	ISO FINISHES: H7/g6 H8/g7 H9/g8 H7/h6 H8/h7 H9/h8	DATE: 1/11/07 SCALE: 1:2	DATE: 1/11/07 SCALE: 1:2	TITLE: ADAPTER GROUP	Dwg No: 64013 Model: 70A Part No: 070017
	TOLERANCES: FRACTIONS DECIMALS ANGLES	TOLERANCES: FRACTIONS DECIMALS ANGLES	TOLERANCES: FRACTIONS DECIMALS ANGLES	TOLERANCES: FRACTIONS DECIMALS ANGLES	DATE: 1/11/07 SCALE: 1:2	DATE: 1/11/07 SCALE: 1:2	TITLE: ADAPTER GROUP	Dwg No: 64013 Model: 70A Part No: 070017
	TOLERANCES: FRACTIONS DECIMALS ANGLES	TOLERANCES: FRACTIONS DECIMALS ANGLES	TOLERANCES: FRACTIONS DECIMALS ANGLES	TOLERANCES: FRACTIONS DECIMALS ANGLES	DATE: 1/11/07 SCALE: 1:2	DATE: 1/11/07 SCALE: 1:2	TITLE: ADAPTER GROUP	Dwg No: 64013 Model: 70A Part No: 070017

RE: Carco 50B on a Case 1150K

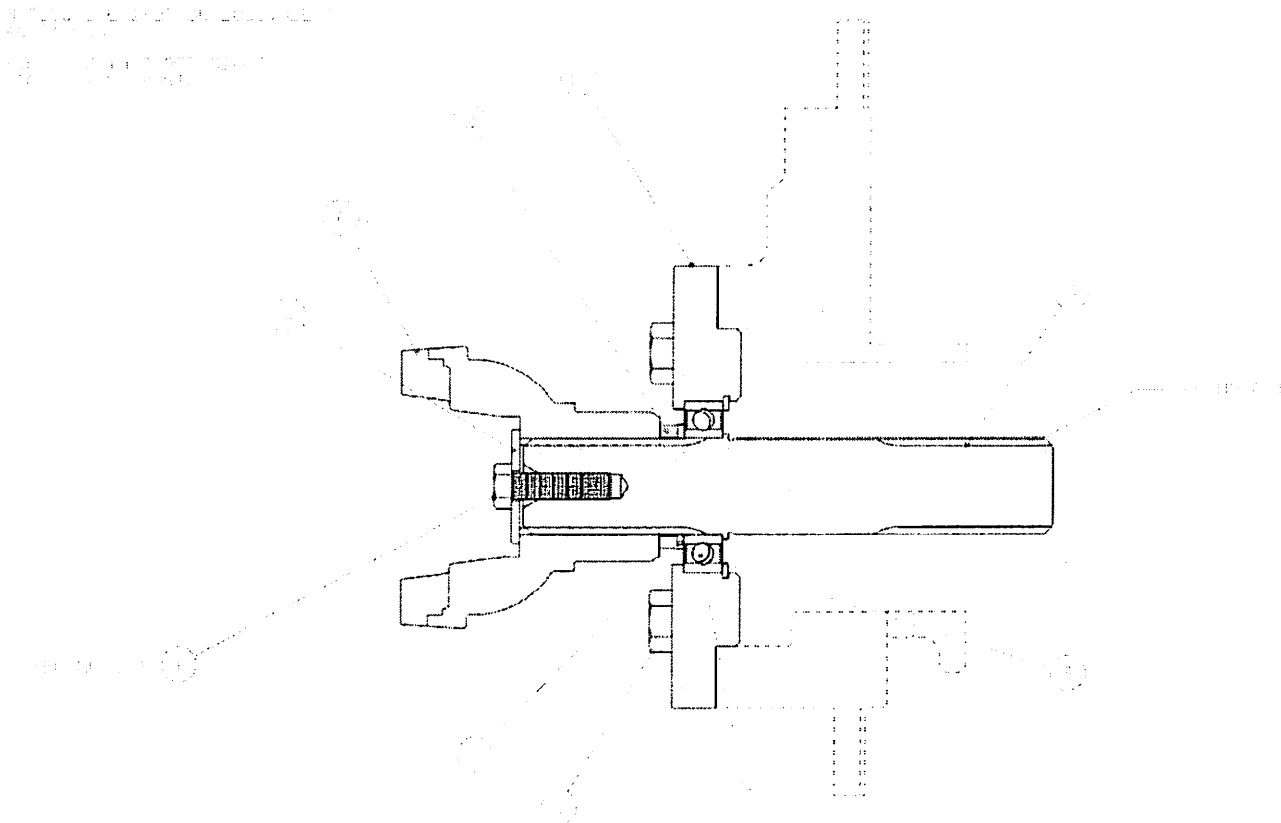
1 message

Bill Tibbett <Bill.Tibbett@paccar.com>

Fri, Oct 18, 2024 at 1:58 PM

To: Nephi Sessions <Nephi.Sessions@paccar.com>, CRAWLER SALES LIMITED <chriscsi@telus.net>

Drawing and BOM below.



PART NUMBER 64013 SELECT DATE 10182024 SELECT ALTERNATE

ADAPTER GROUP 50B/CASE 1150K PLANNER.... 962 SELECT DISPLAY..

ITEM STATUS..... C MAKE/BUY.. IF

S	IS PART NUMBER	ITM DESCRIPTION	SEQ	QTY/PER	UM
1	104132	001 CAPSCREW *	020	1.000	EA
1	104174	002 CAPSCREW *	040	4.000	EA
1	32104	003 16314-244 RETAINING RING	060	1.000	EA
7	69551	004 69551 WASHER	080	1.000	EA
7	69548	005 69548 PTO SHAFT	100	1.000	EA
C	107072	006 END YOKE 1 3/8 10B	121	1.000	EA

1	69549	007 69549 BALL BEARING	140	1.000 EA
7	69530	008 69530 SUPPORT WASHER	160	1.000 EA
7	69550	009 69550 SPACER	180	1.000 EA
7	69410	010 69410 CARRIER MOD70	200	1.000 EA

Thank you,

Bill Tibbett

Field Service Manager

Direct: (918) 259-3321 | Cell: (918) 407-6800

E-Mail: bill.tibbett@paccar.com



From: Nephi Sessions <Nephi.Sessions@PACCAR.com>
Sent: Friday, October 18, 2024 2:35 PM
To: Bill Tibbett <Bill.Tibbett@PACCAR.com>
Subject: FW: Carco 50B on a Case 1150K

From: CRAWLER SALES LIMITED <chriscl@telus.net>
Sent: Friday, October 18, 2024 2:30 PM
To: Nephi Sessions <Nephi.Sessions@PACCAR.com>
Subject: Carco 50B on a Case 1150K

Nephi - I am trying to find the P/N for these items. I have attached photos for your reference.

1 x Pilot Plate with bearing

1 x PTO Shaft out of winch (goes through the pilot plate) - 10 Spline

--

Thanks

Crawler Sales Limited