

MODEL 70A-PS WINCH for Caterpillar D6D & D6E (Power Shift) TRACTORS

CARCO[®]
for
CATERPILLAR

Caterpillar and Cat are Trademarks of Caterpillar Tractor Co.

MODEL DESCRIPTION:

Internal hydraulic system with suction and pressure circuit filtration, gear type pump and maintenance-free spring-type accumulator. Single lever control of hydraulically actuated multi-disc wet clutches and brake. Equal speed gearing forward and reverse. Rigid cast nodular iron case with cast, pin-on fairlead mounting lugs and heavy duty drawbar.

SPECIFICATIONS:

CABLE DRUM SIZE:

Barrel Diameter	10 in.	(254mm)
Flange Diameter	19 ⁷ / ₈ in.	(504mm)
Barrel Length	13 in.	(330mm)
Applied Weight w/o Oil, w/o Cable	2,600 lb	(1180 kg)

MAXIMUM CABLE CAPACITIES:

5/8 in. (16mm)	580 ft	(177m)
3/4 in. (19mm)	400 ft	(122m)
7/8 in. (22mm)	290 ft	(88m)
1 in. (25mm)	220 ft	(67m)

HYDRAULIC SYSTEM:

Oil Capacity 83 qt (78.5 L)
Hydraulic Pressure for
Winch Control . . . 400 psi (2758 kPa)
Hydraulic Pump is Gear-Type
Accumulator is Spring-Type

OPTIONS:

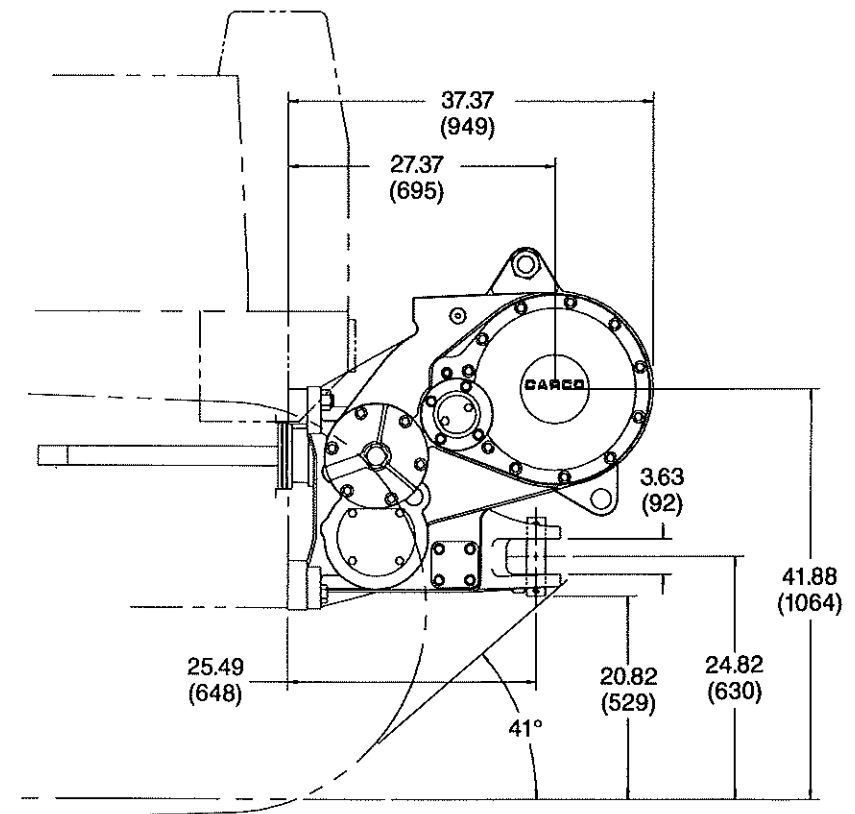
Free Spooling Drum
3 or 4 Roller Fairlead
Logging Arch

*Manual Override Brake System
(Includes Slow Speed Gear Ratio)

*The Manual Override (MOR) brake system utilizes the same brake housing, brake springs and brake discs as the standard brake but adds an additional MOR brake piston which is controlled by a separate control valve installed near the operator to provide very precise load control. Please refer to the Operators Manual, publication PC-104 and the Service Manual, publication PC-137 for additional information before ordering the Manual Override Brake option.

GEAR RATIOS AVAILABLE:

A	40.4:1	
B	51.4:1	STANDARD SPEED
C	66.3:1	
D	85.3:1	
E	112.8:1	SLOW SPEED



PACCAR WINCH DIVISIONS

P.O. BOX 547 • BROKEN ARROW, OK U.S.A. 74013
PHONE (918) 251-8511 • FAX (918) 258-4822

PERFORMANCE GRAPHS:

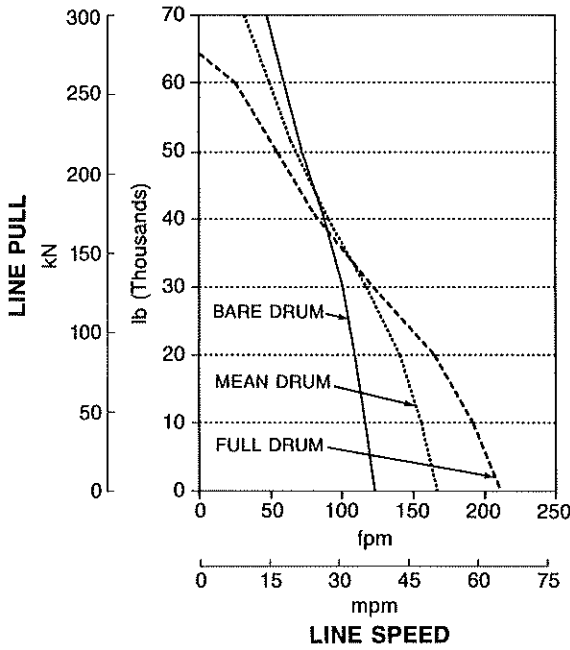
Winch performance graphs are based on power-take-off at full engine throttle. Performance data shown is calculated at rated winch efficiency of 93% using 1 inch cable.

Winch line speeds and line pulls will vary with torque converter output. Torque converter output is dependent on engine load and speed. This tractor is capable of producing input torque to the winch which can result in line pulls in excess of the rated capacity 70,000 lb (314 kN). For pull over 70,000 lb, a multipart line and sheave blocks must be used.

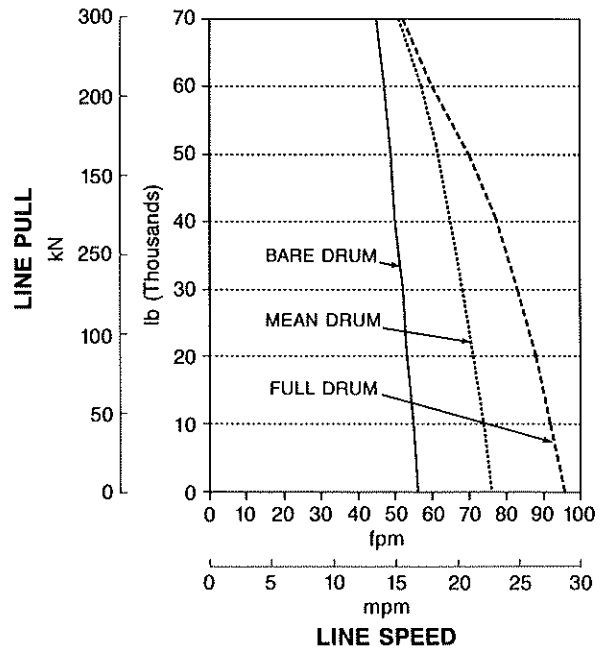
Maximum rated line pull is 70,000 lb (314 kN) and maximum rated cable diameter is 1.0 in. (25 mm).

D6D-PS — 140 HP @ 1900 RPM

STANDARD SPEED B — 1.27:1, 51.4 OAR

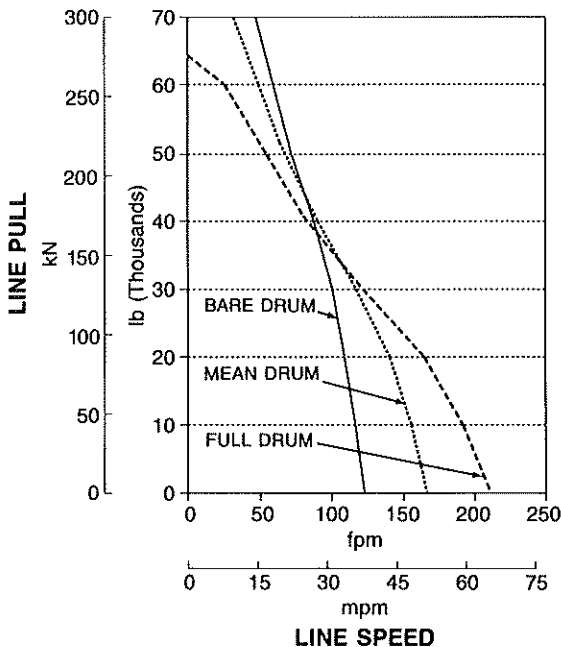


SLOW SPEED E — 2.79:1, 112.8 OAR

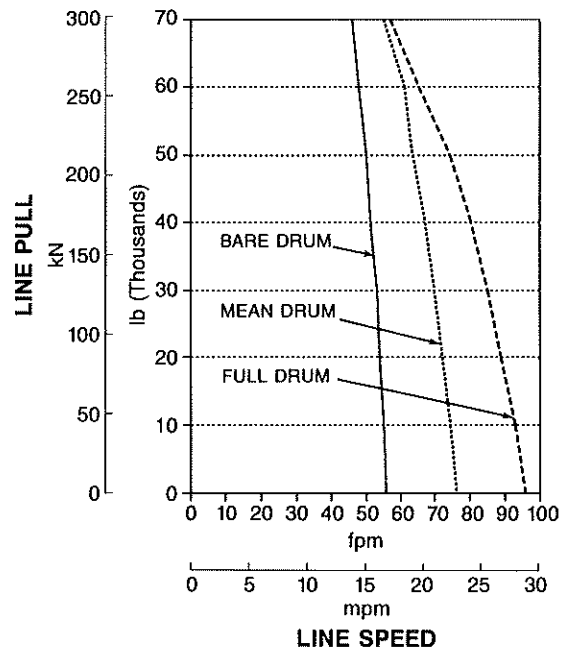


D6E-PS — 155 HP @ 1900 RPM

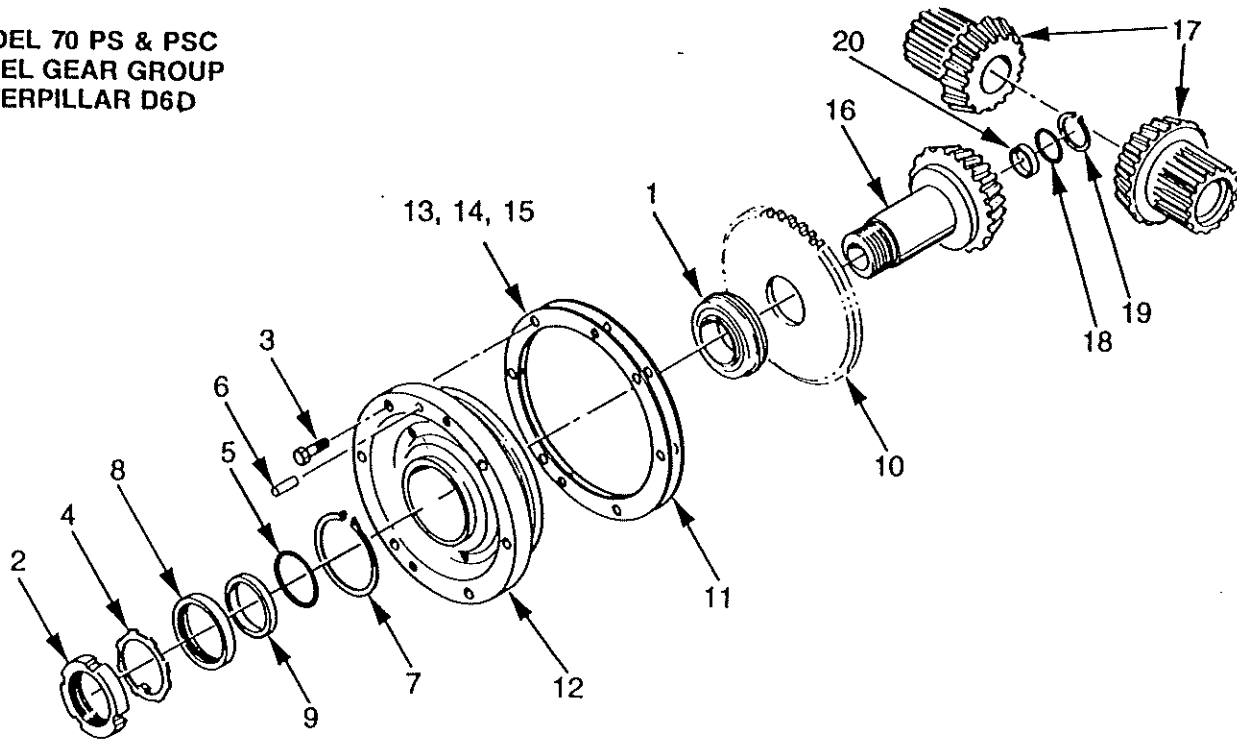
STANDARD SPEED B — 1.27:1, 51.4 OAR



SLOW SPEED E — 2.79:1, 112.8 OAR



**MODEL 70 PS & PSC
BEVEL GEAR GROUP
CATERPILLAR D6D**



ITEM	PART NO.	DESCRIPTION	QTY.
1	70077	BEARING ASSEMBLY	1
2	24816	BEARING, LOCK NUT	1
3	22697	CAPSCREW HEX HD.	6
4	11418	LOCKWASHER	1
5	74992	O-RING	1
6	10318	DOWEL PIN	1
7	70163	RETAINING RING	1
8	70168	OIL SEAL	1
9	70382	SEAL SPACER	1
10	69947	PUMP DRIVE PINION	1
11	69946	SHIM GASKET	1
12	69961-69962	CARRIER	1
13	69945	SHIM .005"	2-AR
14	69827	SHIM .007"	2-AR
15	69826	SHIM .020"	2-AR
16	69824	BEVEL PINION - STD SPD	1
	69635	BEVEL PINION - SLOW SPD	1
17	70350	BEVEL GEAR - STD SPD	2
	70353	BEVEL GEAR - SLOW SPD	2
18	69813	O-RING	1
19	70162	RETAINING RING	1
20	70626	PLUG, BEVEL PINION	1

BEVEL GEAR SET LISTINGS

NOTE: The Bevel Gear Set above is standard for the adaption indicated. Below are gear combinations to provide a range of line speeds and pulls for various winching requirements. Important — Prior to ordering or quoting on any optional Bevel Gear Set be sure to check with factory on availability, and if the gear set would be recommended for the application.

BEVEL GEAR SET PART NO.	BEVEL GEAR		BEVEL PINION		RATIO	
	PART NO.	TEETH	PART NO.	TEETH	GR. SET	OVERALL
69838	69821	30	69825	30	1:1	40.4:1
69837	70350	33	69824	26	1.27:1	51.4:1
69836	70351	36	69823	22	1.64:1	66.3:1
69835	70352	38	69822	18	2.11:1	85.3:1
69834	70353	39	69635	14	2.78:1	112.8:1

