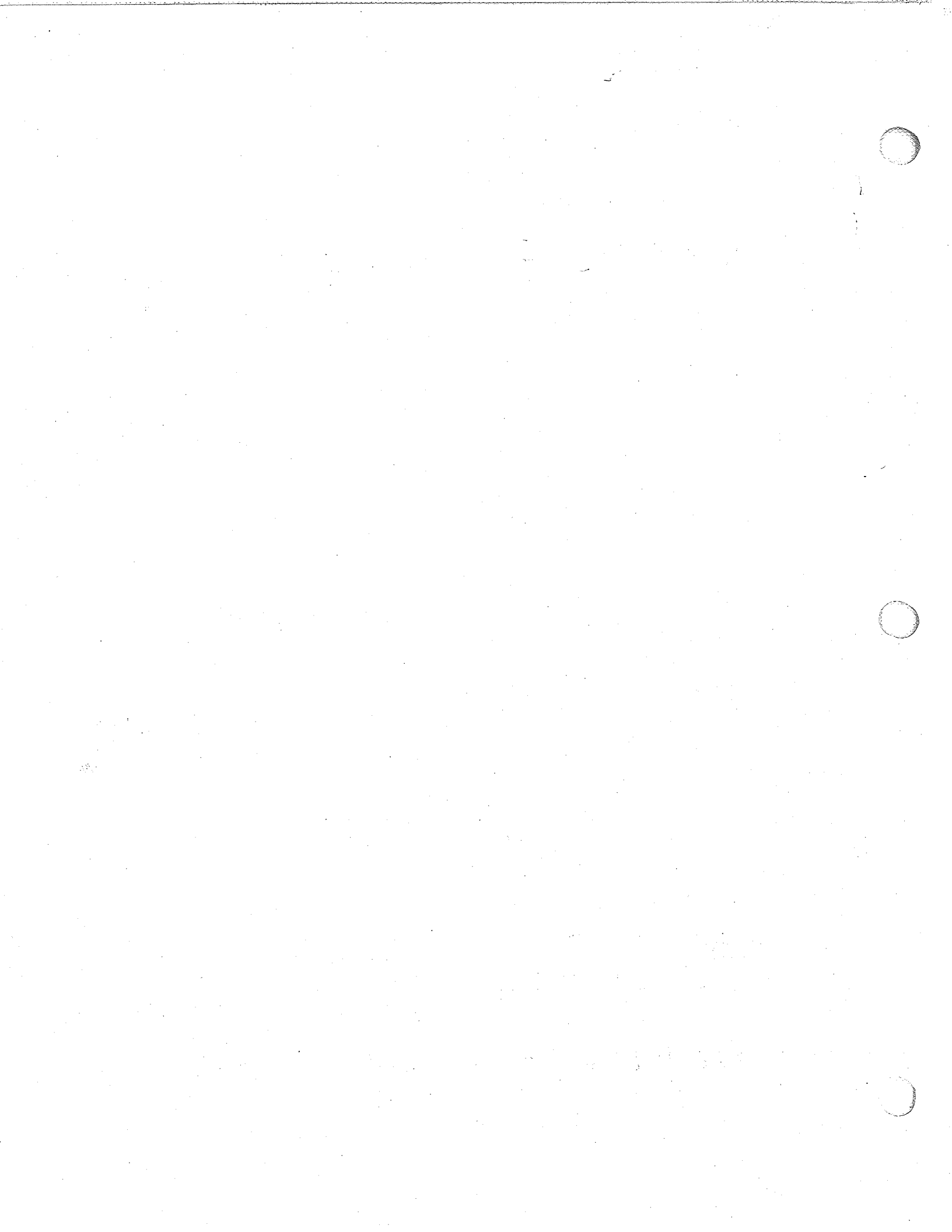


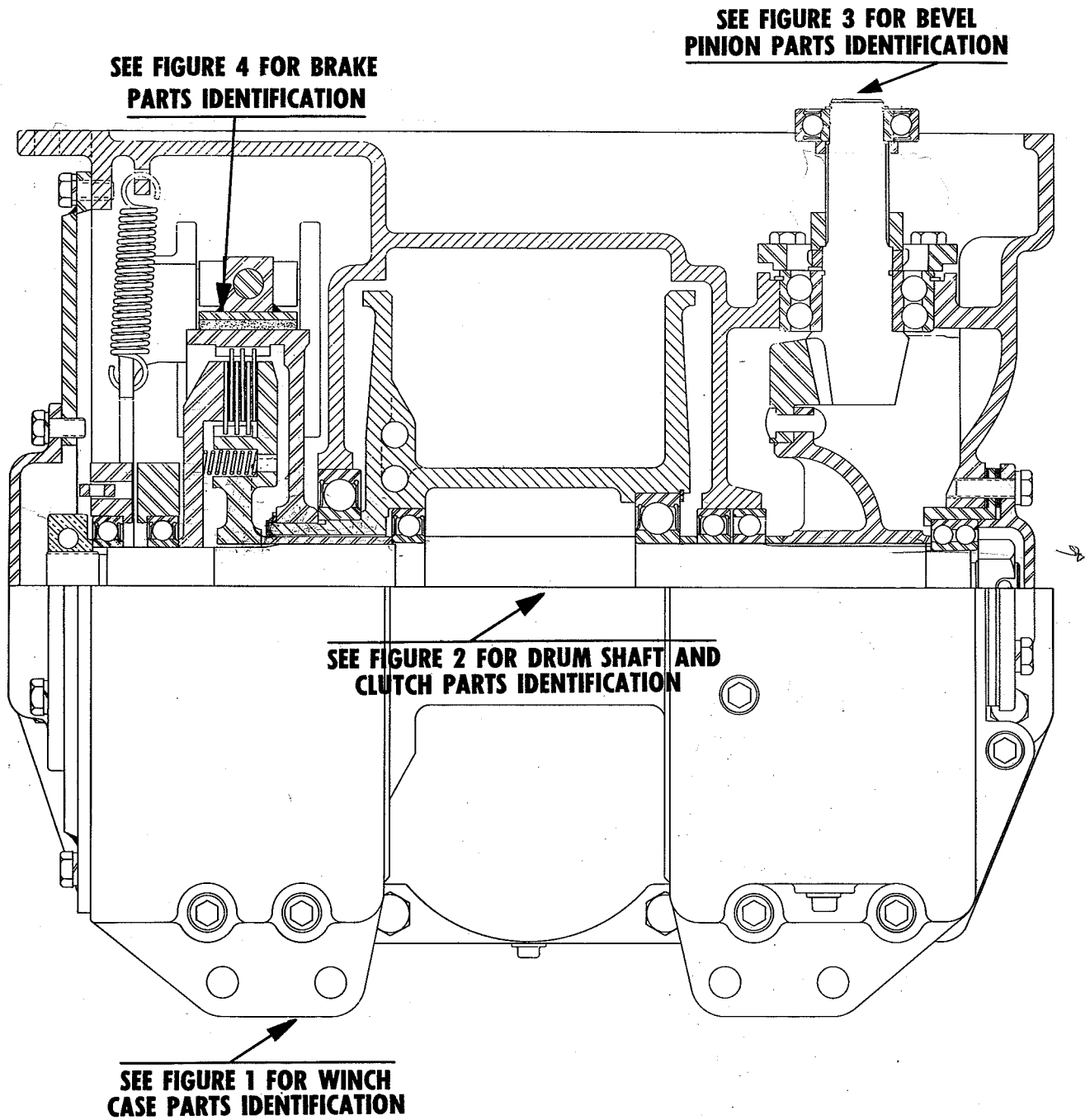
PARTS LIST SECTION
FOR CARCO SERVICE AND PARTS MANUAL

Carco Model A Winch Series 1

ATTENTION: Be sure to give correct part number, part name and complete serial number of winch when ordering. Also name and model of the tractor on which the winch is mounted.

PACIFIC CAR AND FOUNDRY COMPANY
R E N T O N , W A S H I N G T O N , U . S . A .





INDEX DRAWING FOR CARCO MODEL A WINCH

CARCO MODEL A-1 WINCH
 PARTS LIST SECTION
 WINCH CASE ASSEMBLY— PAGE 4

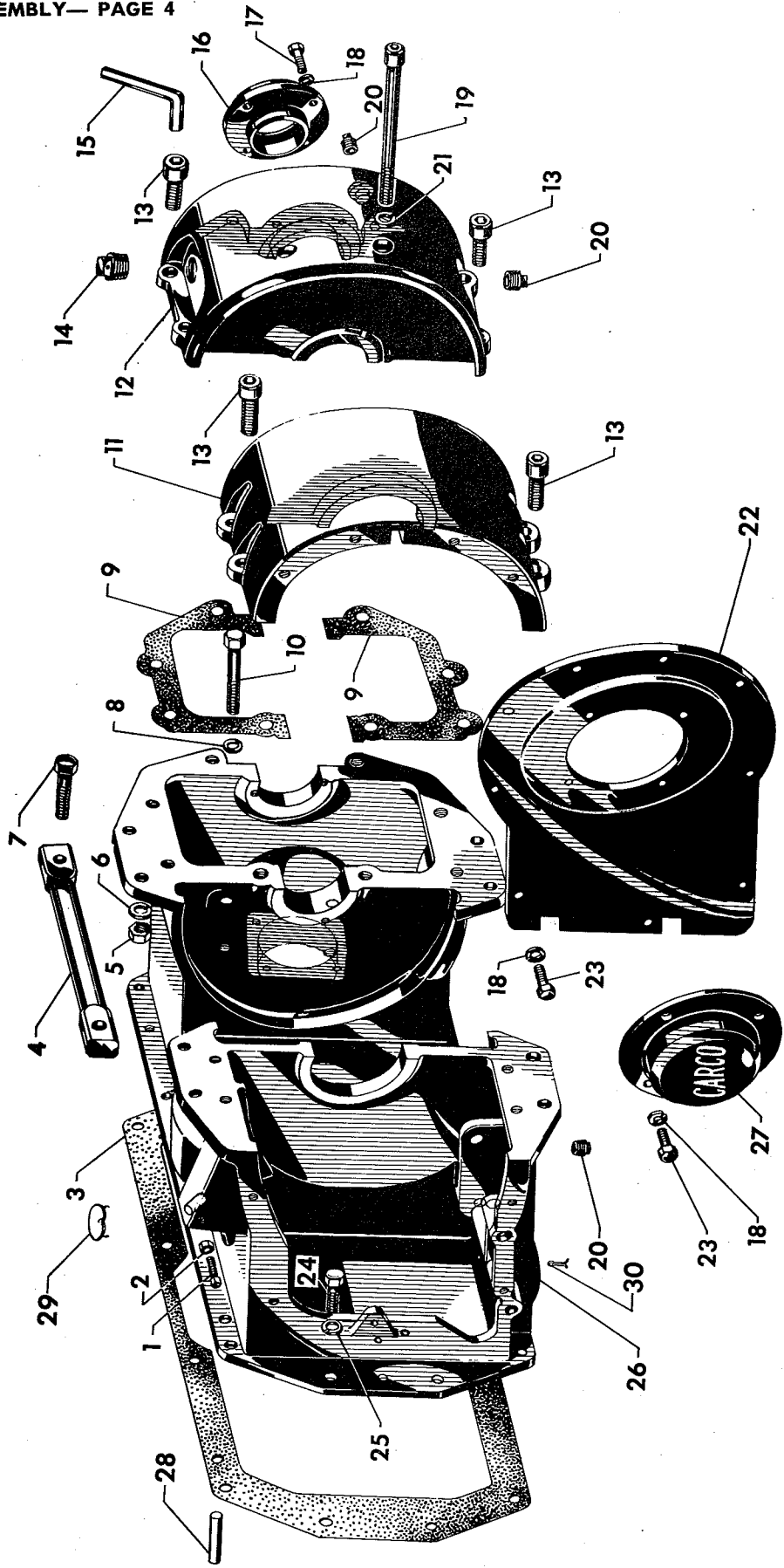


FIGURE 1

CARCO MODEL A-1 WINCH
PARTS LIST SECTION
WINCH CASE ASSEMBLY—PAGE 5

REF.	PART NO.	NAME	Quan. per Unit	REF.	PART NO.	NAME	Quan. per Unit
1	3/8"NCx1"	Square Head Setscrew	1	16	30732	Bearing Cap	1
2	3/8"NC	Jam Nut	1	17	1/2"NFx1 1/2"	Hex Head Capscrew	4
3	30821	Gasket	1	18	1/2"	Lockwasher	17
4	30786	Cable Guard	1	19	3/4"NCx8"	Socket Head Capscrew	2
5	3/4"NC	Hex Nut	2	20	1/2"N.P.T.	Square Head Pipe Plug	3
6	3/4"	Lockwasher	2	21	Y-1168-2	Washer	2
7	3/4"NCx2 1/2"	Hex Head Capscrew	2	22	33722	Cover Plate	1
8	Y-1168-3	Washer	2	23	1/2"NFx1"	Hex Head Capscrew	13
9	30819	Gasket	2	24	5/8"NFx1 1/2"	Hex Head Capscrew	10
10	5/8"NFx3 3/4"	Hex Head Capscrew	2	25	3/8"	Lockwasher	10
11	30678	Case Flange (Brake Side)	1	26	30658	Winch. Case	1
12	30673	Case Flange (Gear Side)	1	27	30742	Clutch Adjusting Cover	1
13	3/4"NCx1 1/4"	Socket Head Capscrew	10	28	5/8"x1 1/2"	Steel Dowel	2
14	Y-2199	Breather Plug	1	29	32095	Cover Plate	1
15	3/8"	Hex Allen Wrench	1	30	1/4"x1"	Cotter Key	1

REFER TO FIGURE 1

CARCO MODEL A-1 WINCH
PARTS LIST SECTION
DRUM AND CLUTCH SHAFT ASSEMBLY—PAGE 6

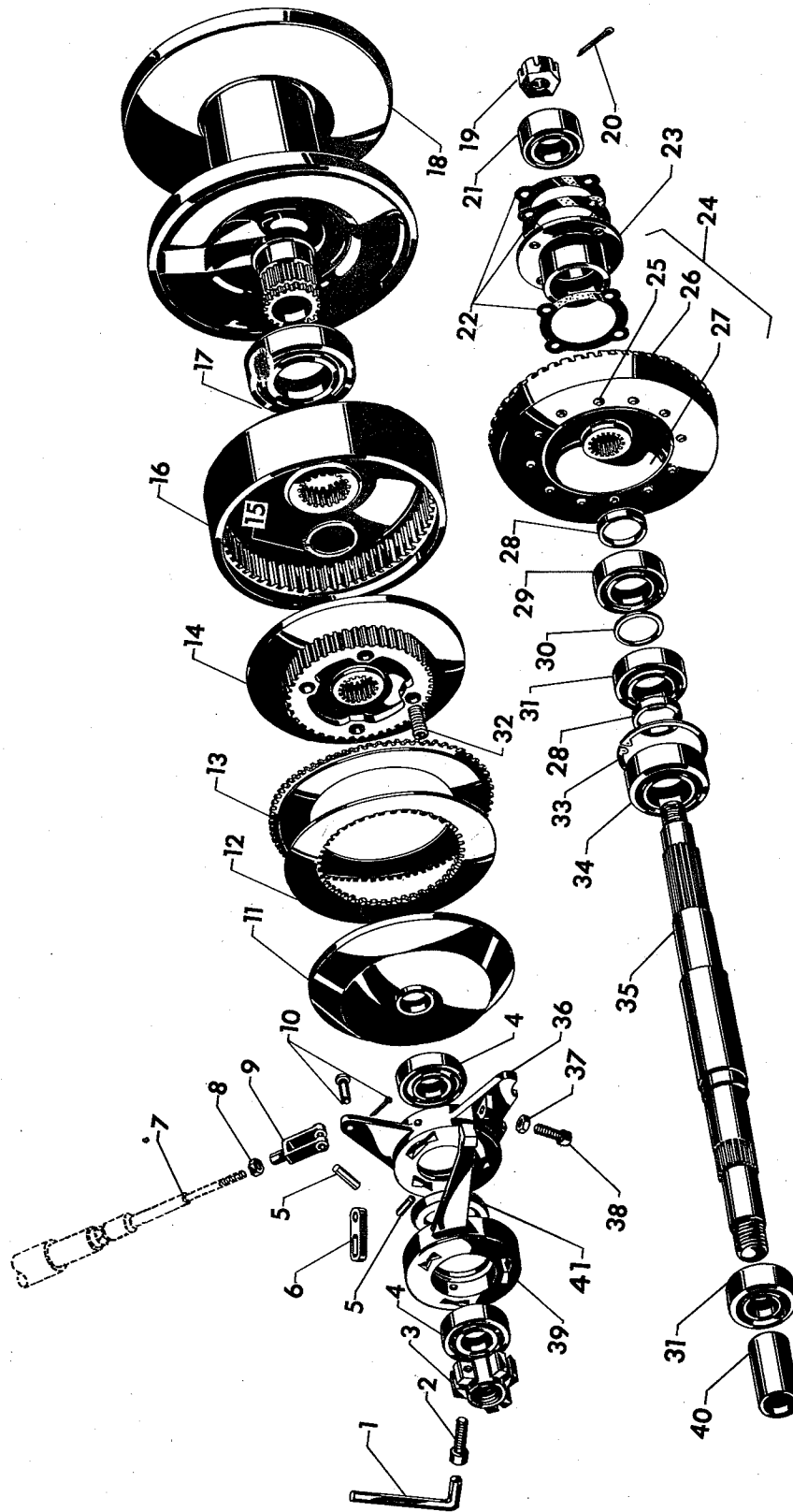


FIGURE 2

CARCO MODEL A-1 WINCH
PARTS LIST SECTION
DRUM AND CLUTCH SHAFT ASSEMBLY—PAGE 7

REF.	PART NO.	NAME	Quan. per Unit	REF.	PART NO.	NAME	Quan. per Unit
1	3/8"	Hex Allen Wrench	1		30787-2	.007 Bevel Adjusting Shim	6
2	1/2"NFx1 1/2"	Socket Head Capscrew	1		30787-3	.020 Bevel Adjusting Shim	8
3	33704	Adjusting Nut	1	23	30733	Bearing Carrier	1
4	210-P.P.	Fafnir Ball Bearing	2	24	30932	Bevel Gear and Spider Assembly	1
5	1/2"x1 1/4"	Steel Dowel	6	25	3/8"x1 1/2"	Button Head Rivet	12
6	30725	Clutch Toggle Link	3	26	30664	Spiral Drive Gear	1
7		Control Cable		27	30741	Bevel Gear Hub	1
8	3/8"NF	Jam Nut	1	28	30720	Bearing Spacer	2
9	2708-4A	Cleveland Adjusting Yoke	1	29	211-S.	M.R.C. Ball Bearing	1
10	2708 1/2-4A	Cleveland Yoke Pin and Cotter	1	30	30723	Bearing Spacer	1
11	33698	Clutch Pressure Plate	1	31	211-S.Z.Z.	M.R.C. Ball Bearing	2
12	30661-4	Clutch Disc	3	32	28698-6	Spring	4
13	30661-3	Clutch Plate	3	33	5000-475	Truarc Retaining Ring	1
14	30738	Clutch Hub	1	34	311-S.Z.Z.	M.R.C. Ball Bearing	1
15	5100-325	Truarc Retaining Ring	1	35	30740	Cable Drum Shaft	1
16	30746	Brake Drum	1	36	30744	Actuator Ring Toggle	1
17	217-S.Z.Z.	M.R.C. Ball Bearing	1	37	1/2"NC	Jam Nut	1
18	30747	Cable Drum	1	38	1/2"NCx1 1/4"	Square Head Set Screw	1
19	Y-743-7	Slotted Nut	1	39	30737	Anchor Toggle Ring	1
20	3/8"x1 1/4"	Cotter Key	1	40	30721 -	Spacer	1
21	5209	Fafnir Ball Bearing	1	41	33568- 33586	Spacer	1
22	30787-1	.005 Bevel Adjusting Shim	6				

REFER TO FIGURE 2

CARCO MODEL A-1 WINCH
 PARTS LIST SECTION
 BEVEL PINION ASSEMBLY—PAGE 8

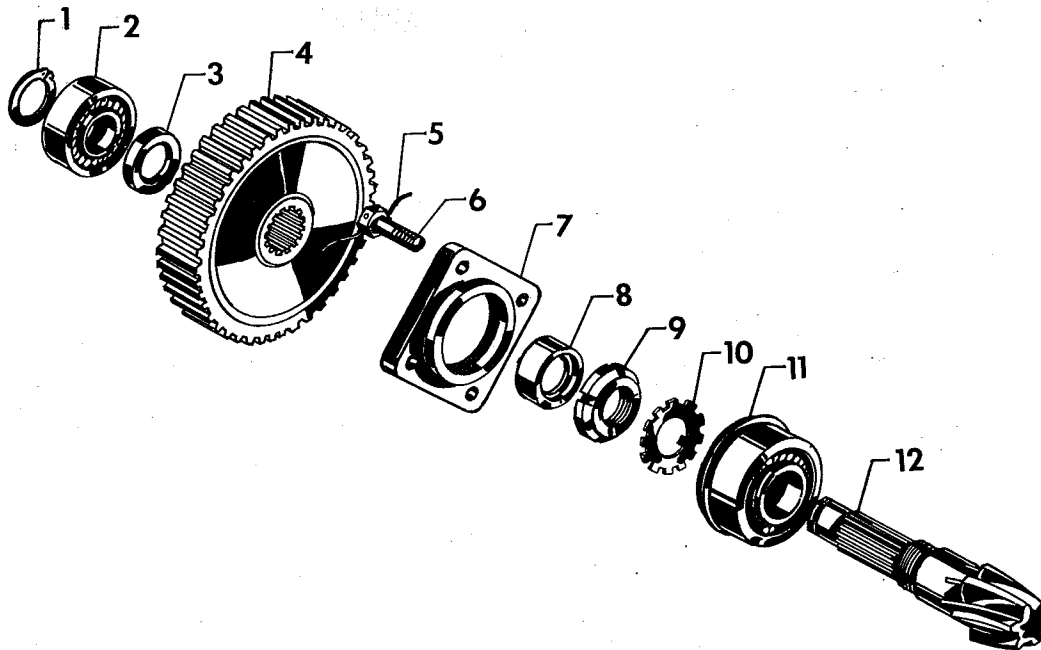


FIGURE 3

REF.	PART NO.	NAME	Quan. per Unit
1	5100-137	Truarc Retaining Ring	1
2	307-S.Z.Z.	M.R.C. Ball Bearing	1
3	30724	Spacer	1
4		Gear (See Adapter Sec. of this manual)	
5	24"x16 Ga.	Lockwire	1
6	½"NFx1¼"	Drilled Head Capscrew	4
7	31333	Bevel Pinion Retainer Ring	1
8	30719	Spacer	1
9	N-09	Standard Bearing Locknut	1
10	W-09	Bearing Lockwasher	1
11	45309-W	New Departure Ball Bearing	1
12	30665	Spiral Drive Pinion	1

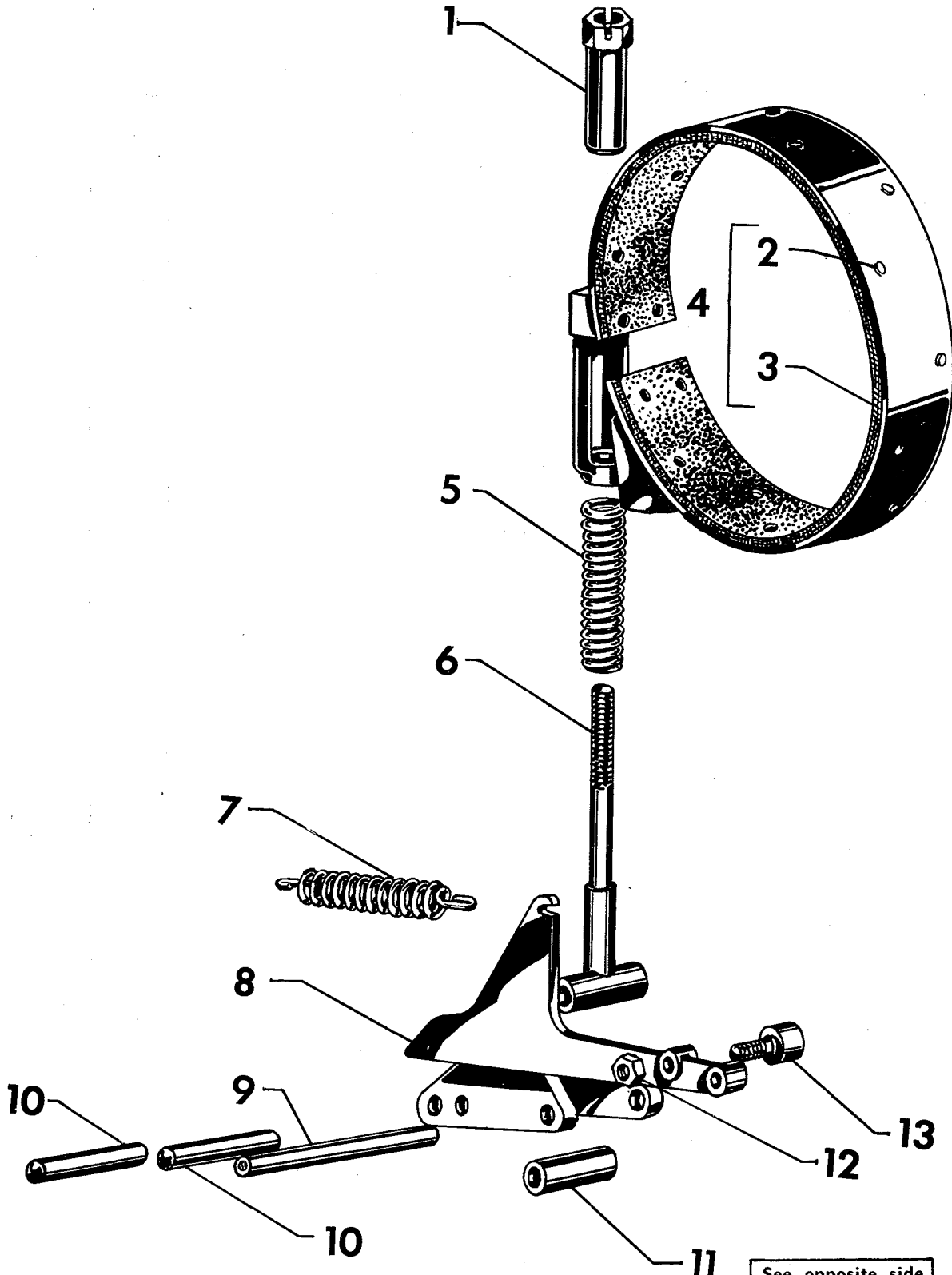


FIGURE 4

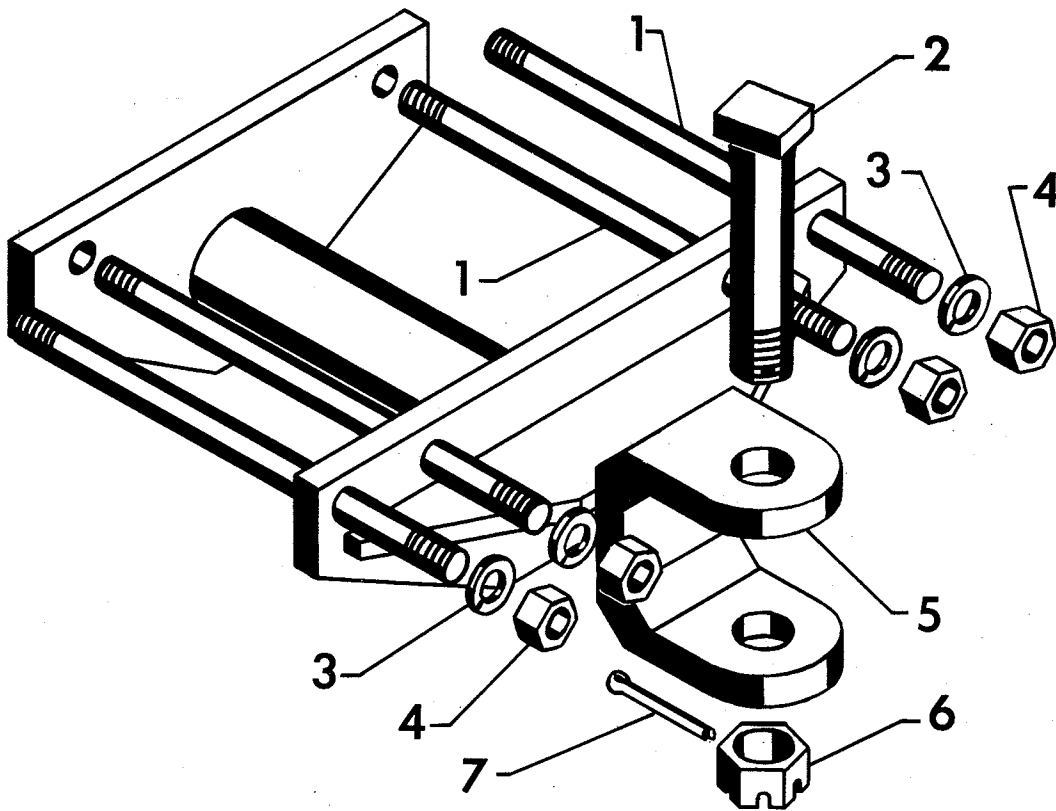
See opposite side
of this page for
the parts list.

CARCO MODEL A-1 WINCH
 PARTS LIST SECTION
 BRAKE ASSEMBLY—PAGE 10

REF.	PART NO.	NAME	Quan. per Unit
1	30728	Brake Adjusting Nut	1
2	30736-2	3/8"x3/8" Brass Tubular Rivet	16
3	30736-3	1/4"x2 1/2"x3'-4 1/4" Raybestos 357B	1
4	30736	Brake Band Assembly (Incl. Items 2 and 3)	1
5	28698-7	Spring	1
6	30729	Brake Rod	1
7	X-1311-9	Spring	1
8	30745	Brake Lever	1
9	30718	Brake Pin	1
10	30717	Brake Pin	2
11	31337	Brake Cam Roller	1
12	1/2"NF	Hex Nut	1
13	C.F.-1 1/4	McGill Cam Follower	1

See opposite side
 of this page for
 exploded view.

CARCO MODEL A-1 WINCH
 PARTS LIST SECTION—PAGE 11
 RIGID COUPLER



RIGID COUPLER ASSEMBLY COMPLETE PART NO. 32480

REF.	PART NO.	NAME	Quan. per Unit
1	25993-32	Stud	4
2	32871-2	Coupler Bolt	1
3	¾"	Lockwasher	4
4	¾"NF	Hex Nut	4
5	32479	Rigid Coupler	1
6	1¼"NC Reg.	Slotted Nut	1
7	⅜"x3"	Cotter Pin	1

