

MODEL H60 WINCH for Caterpillar D6N CRAWLER TRACTORS

CARCO®

for CATERPILLAR

Caterpillar and CAT are Trademarks of Caterpillar Inc.

MODEL H60 FEATURES

- Precise Load Control with No Fall-Back
- Load can be "Feathered" Without Damaging Winch Components
- Patented Drum Release Clutch Maintains Rope Tension While Driving Away from a Load
- Hydraulic Motor and Gear Ratio Matched to Tractor Hydraulics to Maximize Available Power

MODEL H60 DESCRIPTION

- All Winch Components Enclosed in a Rigid, Cast Ductile Iron Housing
- Hydraulically Driven by the Tractor Hydraulic System, **NO PTO** Connection Required
- Bolt-On Fairlead Mounting Lugs and Heavy-Duty Rigid Draw Bar.
- Standard Freespool and Brake-Off

SPECIFICATIONS

GENERAL SPECIFICATIONS

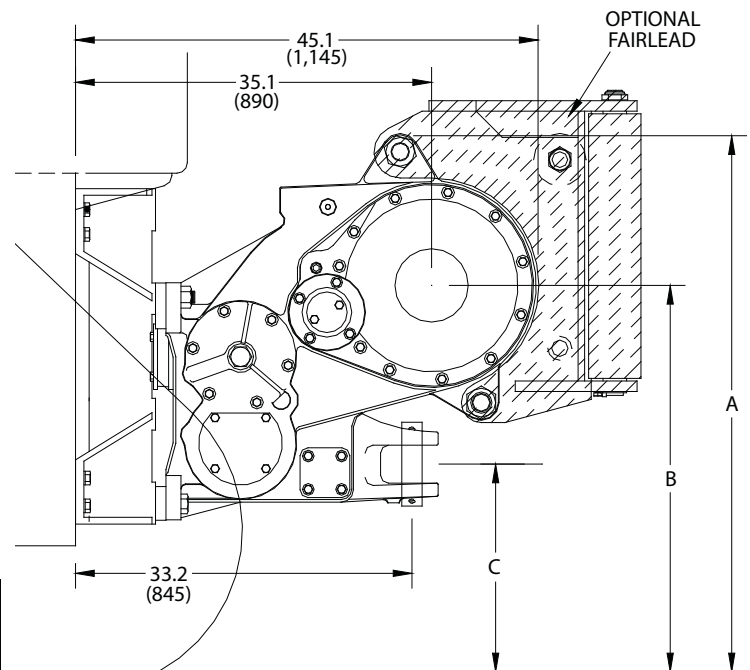
Overall Winch Gear Ratio139.3:1
 Cable Drum Barrel Diameter10 in. (254 mm)
 Cable Drum Flange Diameter20 in. (508 mm)
 Cable Drum Barrel Length12 3/8 in. (314 mm)

HYDRAULIC SYSTEM

Gear Case Oil Capacity20 qts (19 L)
 Static Brake Release Pressure
 approx 400 PSI (2,760 kPa)
 Brake-Off (Drum Clutch Release) Pressure
 approx 320 PSI (2,205 kPa)
 Applied Weight *2,600 lbs (1,180 kg)

OPTIONS

3 or 4 Roller Fairlead
 Extended Draw Bar



DIMENSIONS SHOWN ARE INCHES (mm)

	D6N XL	D6N LGP
A	55.0 in. 1,395 mm	59.5 in. 1,510 mm
B	40.5 in. 1,030 mm	45.0 in. 1,145 mm
C	23.4 in. 595 mm	27.9 in. 710 mm

Approved Cable Diameters	Maximum Theoretical Cable Capacity per SAE J1158†	Maximum Recommended Cable Capacity per SAE J706†	PACCAR Ferrule Part Number ‡
3/4 in (19 mm)	391 ft (119 M)	267 ft (81 M)	29424
7/8 in (22 mm)	281 ft (86 M)	180 ft (55 M)	29425
1 in (26 mm)	218 ft (66 M)	163 ft (50 M)	29426

* Base winch without mounting arrangement, oil, or wire rope.

† Refer to PACCAR Publication LIT2435 for more information on proper wire rope selection for PACCAR Winches.

‡ Use six-strand IWRC RRL Wire Rope with PACCAR Ferrules.

PACCAR WINCH DIVISION
 P.O. BOX 547 BROKEN ARROW, OK U.S.A. 74013
 PHONE (918) 251-8511 FAX (918) 259-1575
www.paccarwinch.com

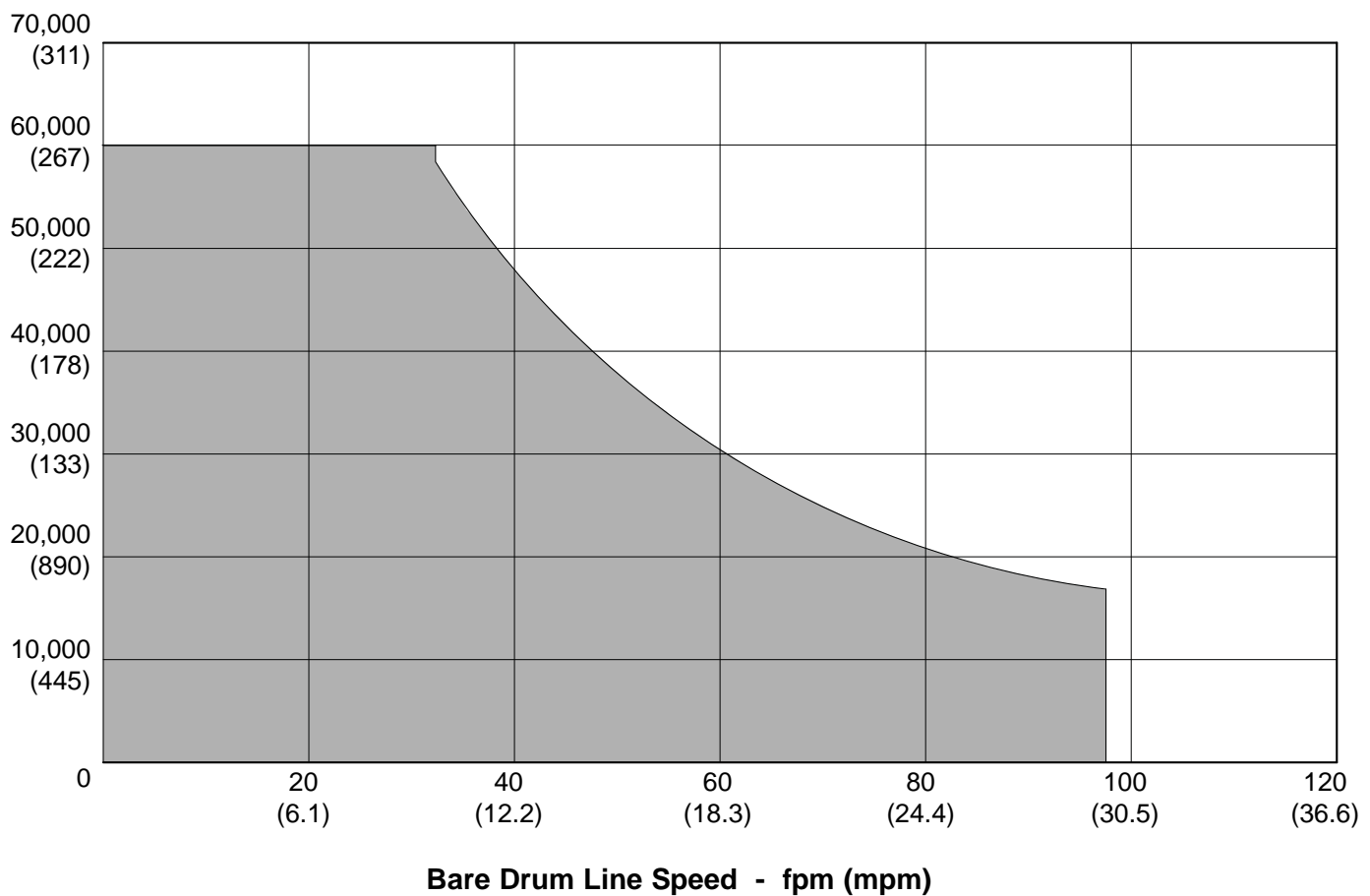
PERFORMANCE GRAPH:

Winch performance graph is based on utilization of the full flow and pressure available from the tractor high pressure hydraulic system. Performance data shown is calculated using 0.75 in. (19 mm) wire rope.

Maximum warrantable wire rope diameter is 1.0 in. (25 mm).

CARCO H60 WINCH ON Caterpillar D6N TRACTOR 3,500 psi (24,130 kPa) @ 35 gpm (132 lpm)

Bare Drum
Line Pull -
LBS (kN)



The H60 winch is capable of operating anywhere in the shaded area of the graph.