

CARCO®

WINCH PARTS MANUAL

MODEL H90VS

NOTE: This manual covers all common winch parts only. For all other parts, refer to the installation and parts manual for your specific tractor. Because this manual covers several winch configurations, not all parts shown will apply to your winch. Care should be taken to properly identify parts before replacements are ordered. Always include the winch model and serial numbers when requesting information or ordering parts.

TABLE OF CONTENTS

Winch Housing Group	1-2
Fairlead Parts Group	1-2
Output Planet Carrier Assembly	3
Inter Planet Carrier Assembly	4
Carrier Clutch Assembly	5
Sprag Clutch Assembly	6
Brake Housing Assembly	7-8

MODEL NUMBER DESCRIPTION

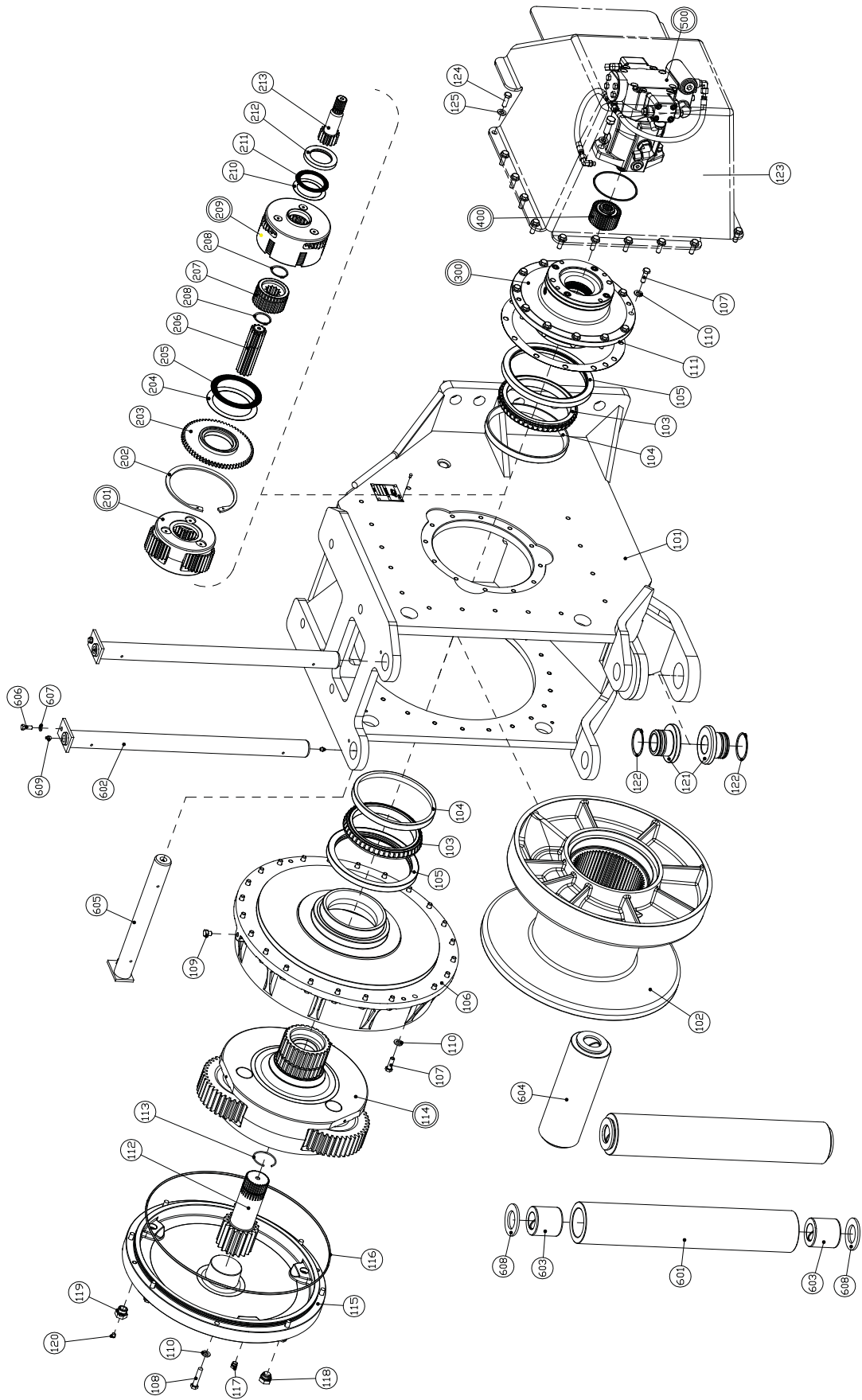
H90VS	212	V	039/022	3
Basic Winch Model	Overall Gear Ratio 212:1	Motor Type V - Variable Displacement	Motor Size Cu. In. Displacement per Revolution 039 - 3.9 cu. in. (High) 022 - 2.2 cu. in. (Low)	Fairlead 3 - 3 Roller 4 - 4 Roller

**WINCH HOUSING AND FAIRLEAD GROUPS
H90VS**

ITEM NO.	PART NO.	DESCRIPTION	QTY.
101	102795	WINCH HOUSING	1
102	108026	CABLE DRUM	1
103	29277	BEARING CONE	2
104	29278	BEARING CUP	2
105	29281	OIL SEAL	2
106	102791	RING GEAR	1
107	29855	CAPSCREW (1/2 -13 X 3, GD8, HEX HD)	36
108	104131	CAPSCREW (1/2 -13 X 2-1/2, GD8, HEX HD)	8
109	10009	CAPSCREW (1/2 - 13 X 1/2, GD5, HEX HD)	1
110	100859	WASHER, HARD (1/2)	44
111	63235	SHIM PACK	2 A/R
112	103183	OUTPUT SUN GEAR	1
113	102801	RETAINING RING	1
114	82922	OUTPUT PLANET CARRIER ASSEMBLY (REFER TO PAGE 3)	1
115	103185	END COVER	1
116	29296	O-RING	1
117	26686	PLUG	1
118	40161	MAGNETIC DRAIN PLUG	1
119	29678	FILL-VENT PLUG	1
120	10074	RELIEF VALVE/VENT	1
121	102206	BUSHING	2
122	102209	RETAINING RING	2
123	106171	MOTOR COVER	1
124	104322	CAPSCREW (1/2 - 13 X 1-1/2, GD8 Z)	14
125	100859	WASHER, HARD (1/2)	14
201	81845	INTERMEDIATE PLANET CARRIER ASSEMBLY (REFER TO PAGE 4)	1
202	103029	RETAINING RING	1
203	102797	THRUST RING	1
204	103177	THRUST WASHER	1
205	103176	NEEDLE ROLLER BEARING	1
206	102784	INTERMEDIATE SUN GEAR	1
207	102802	GEAR ADAPTER	1
208	23875	RETAINING RING	2
209	82920	CARRIER CLUTCH ASSEMBLY - 212:1 RATIO (REFER TO PAGE 5)	1
	82924	CARRIER CLUTCH ASSEMBLY - 255:1 RATIO (REFER TO PAGE 5)	
210	103179	THRUST WASHER	1
211	103178	NEEDLE ROLLER BEARING	1
212	102790	THRUST RACE	1
213	103015	PRIMARY SUN GEAR - 255:1 RATIO	1
	102783	PRIMARY SUN GEAR - 212:1 RATIO	1
300	82921	BRAKE HOUSING ASSEMBLY (REFER TO PAGE 7)	1
400	81716	SPRAG CLUTCH ASSEMBLY (REFER TO PAGE 6)	1
500	---	HYDRAULIC MOTOR GROUP (REFER TO INSTALLATION GUIDE FOR SPECIFIC TRACTOR USAGE)	1
701	102628	DRAWBAR PIN (NOT SHOWN)	1
702	70148	COTTER PIN (NOT SHOWN)	2

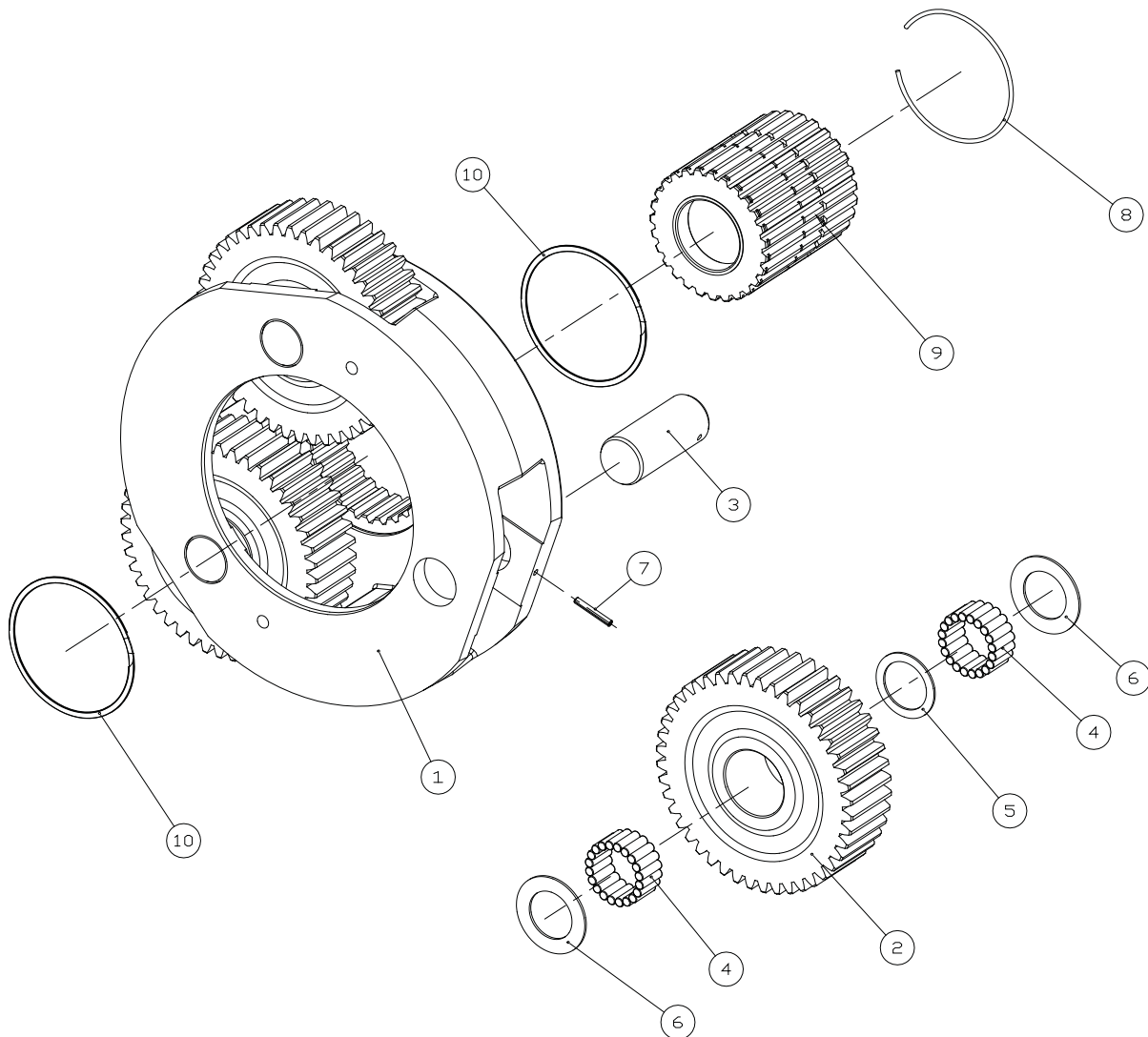
ITEM NO.	PART NO.	DESCRIPTION	QTY.	
			3-ROLLER	4-ROLLER
601	40208	VERTICAL ROLLER	2	2
602	40209	VERTICAL SHAFT ASSEMBLY	2	2
603	29314	BUSHING	6	8
604	102793	HORIZONTAL ROLLER	1	2
605	102792	HORIZONTAL SHAFT ASSEMBLY	1	2
606	104309	CAPSCREW (3/8 - 16 X 1 IN., GD8, HEX HD)	3	4
607	101440	WASHER, HARD (3/8)	3	4
608	29742	WASHER, HARD (2 IN.)	6	8
609	18047	GREASE FITTING	6	8
---	63433	4TH ROLLER GROUP (INCLUDES ITEMS 603 - 609 NEEDED FOR ONE COMPLETE ROLLER INSTALLATION)	OPT.	---

WINCH HOUSING AND FAIRLEAD GROUPS H90VS



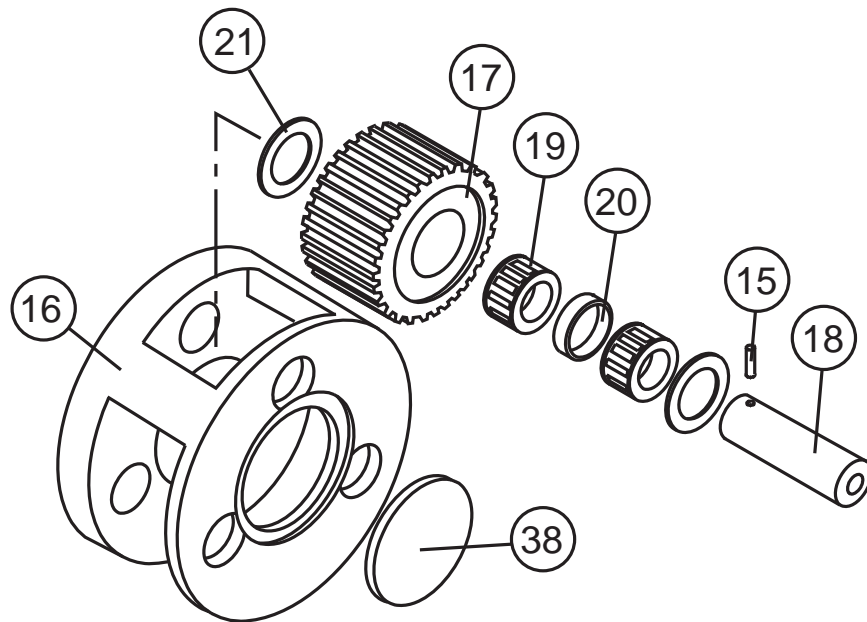
**OUTPUT PLANET CARRIER ASSEMBLY
H90VS**

ITEM NO.	PART NO.	DESCRIPTION	QTY.
--	82922	OUTPUT PLANET CARRIER ASSEMBLY	1
1	29348	OUTPUT PLANET CARRIER	1
2	102798	PLANET GEAR	3
3	29262	PLANET PIN	3
4	27911	ROLLER	120
5	29299	BEARING SPACER	3
6	29300	THRUST WASHER	6
7	13028	ROLL PIN	1
8	29291	RETAINING RING	1
9	102807	DRUM SHAFT	1
10	29349	RETAINING RING	2



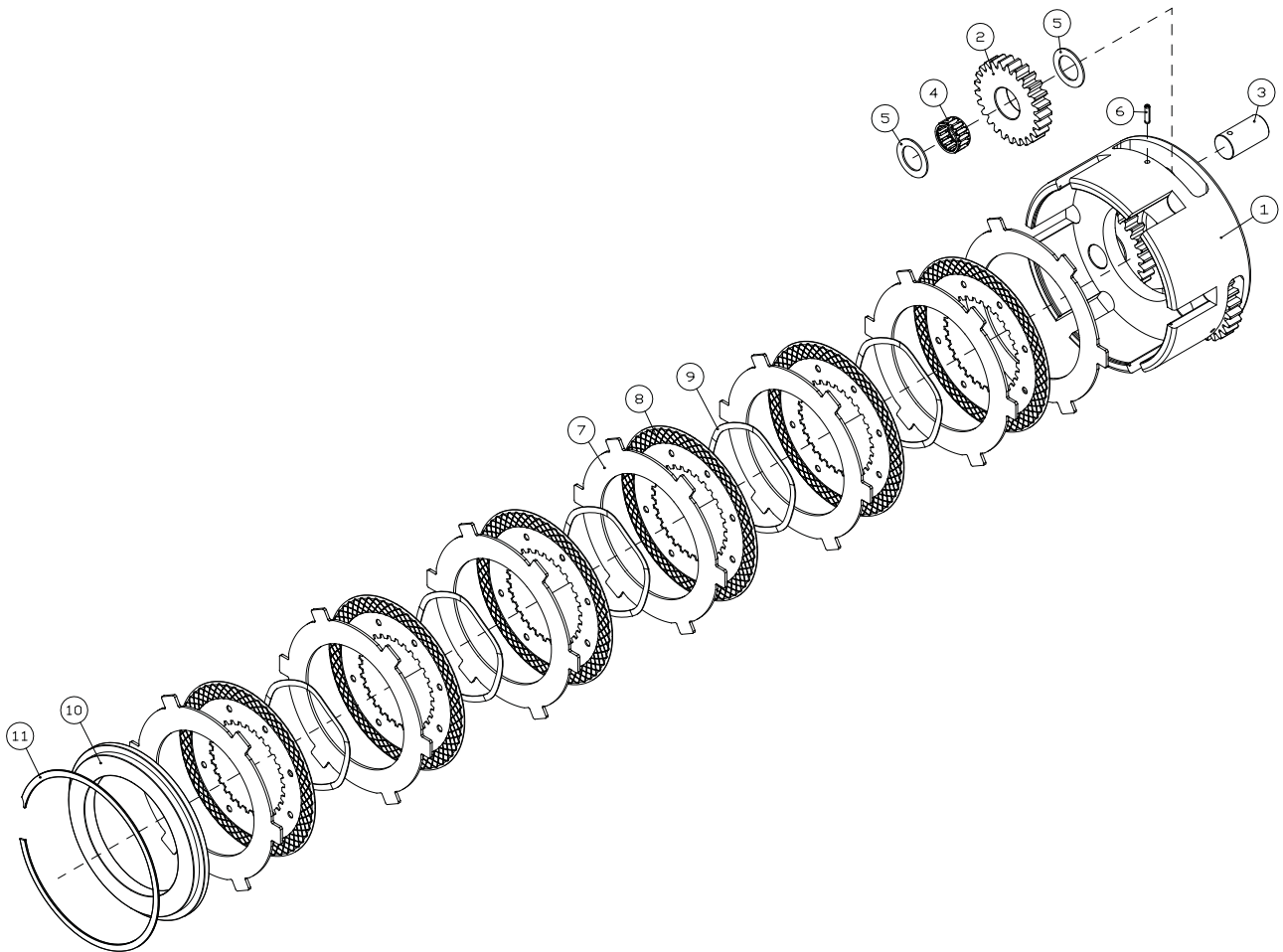
**INTERMEDIATE PLANET CARRIER ASSEMBLY
H90VS**

ITEM NO.	PART NO.	DESCRIPTION	QTY.
--	81845	INTERMEDIATE PLANET CARRIER ASSEMBLY	1
15	23584	ROLL PIN	3
16	25602	PLANET CARRIER	1
17	26467	PLANET GEAR	3
18	25613	PLANET GEAR SHAFT	3
19	25292	ROLLER BEARING	6
20	25443	BEARING SPACER	3
21	24306	THRUST WASHER	6
38	25638	OUTPUT SPACER	1



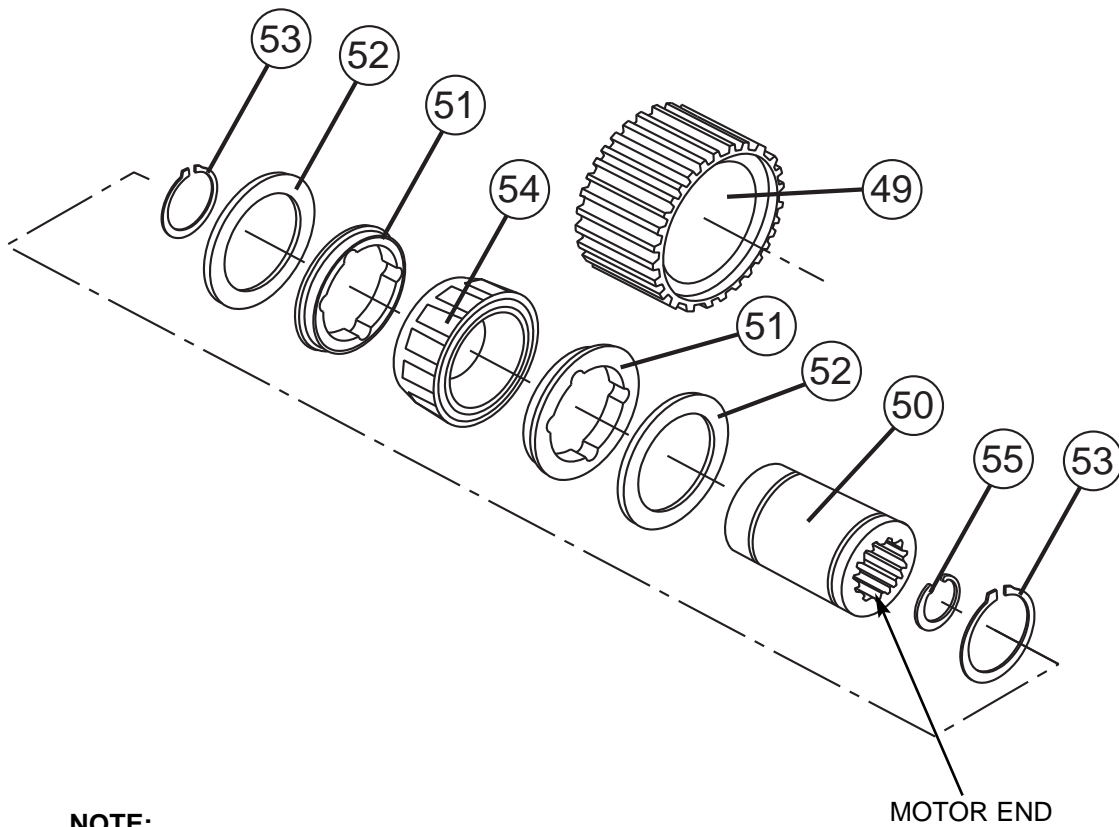
**CARRIER CLUTCH ASSEMBLY
H90VS**

ITEM NO.	DESCRIPTION	255:1 RATIO PART NO.	212:1 RATIO PART NO.	QTY.
--	CARRIER CLUTCH ASSEMBLY	82924	82920	1
1	CARRIER CLUTCH	103187	102780	1
2	PLANET GEAR	26466	40237	3
3	PLANET GEAR SHAFT	25614		3
4	ROLLING BEARING	24175		3
5	BEARING RACE	25361		6
6	ROLL PIN	24113		3
7	BRAKE PLATE	101377		7
8	FRICTION DISC	101378		6
9	WAVE SPRING	103182		5
10	THRUST RING	102803		1
11	RETAINING RING	26147		1



**SPRAG CLUTCH ASSEMBLY
H90VS**

ITEM NO.	PART NO.	DESCRIPTION	QTY.
---	81716	SPRAG CLUTCH ASSEMBLY	1
49	NSS	OUTER BRAKE RACE	1
50	NSS	INNER BRAKE RACE	1
51	27684	SPRAG BEARING	2
52	24581	THRUST BEARING	2
53	12034	RETAINING RING	2
54	NSS	SPRAG CLUTCH	1
55	24506	RETAINING RING	1



NOTE:

Inner race (item 50) to free wheel clockwise (CW) when viewing motor end.

**BRAKE HOUSING ASSEMBLY
H90VS**

ITEM NO.	PART NO.	DESCRIPTION	QTY.
---	82921	BRAKE HOUSING ASSEMBLY	1
1	102781	BRAKE HOUSING	1
2	102785	PRESSURE PLATE	1
3	25642	SEAL	1
4	21036	FRICION DISC	7
5	100027	BRAKE DISC	8
6	100459	MOTOR SUPPORT	1
7	21908	CAPSCREW (1/2 - 13 X 1 1/2, GD8, HEX SOCKET HD)	4
8	24981	O-RING	1
9	25643	BACK-UP RING	1
10	102788	CLUTCH PISTON	1
11	102789	SEAL RING	1
12	103013	SPRING	16
13	103014	SPRING	4
14	102787	SPRING SPACER	1
15	102786	SPRING PUCK	6
16	31603	O-RING	2
17	70142	O-RING	1
18	103016	RETAINING RING	1

BRAKE HOUSING ASSEMBLY H90VS

